



Ward of Siparia
County of St. Patrick
Cadastral Sheet G.13.J. 63F

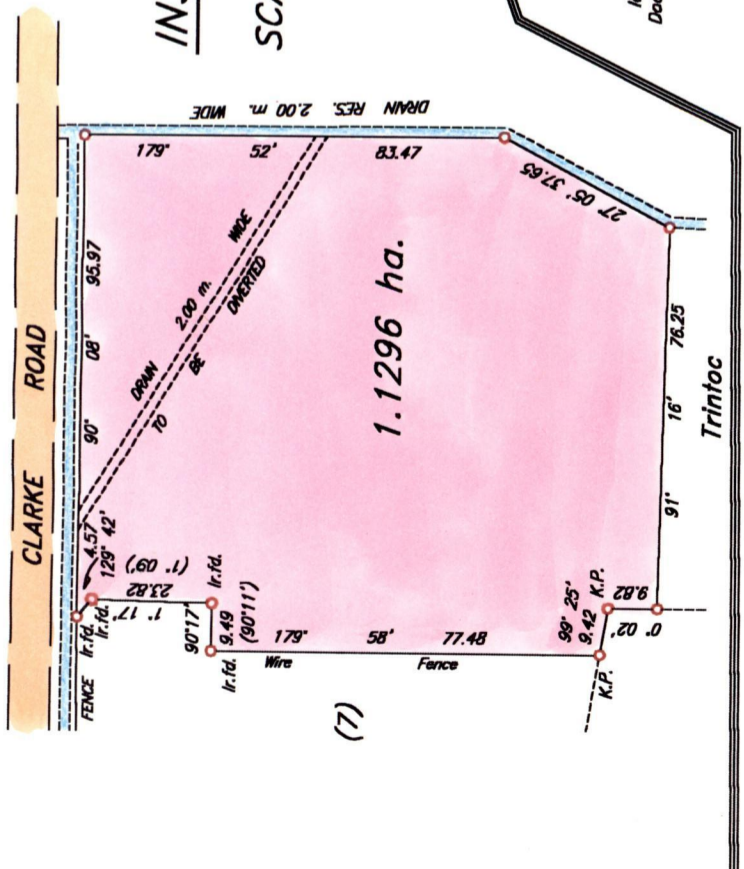
R.P.O. Vol. 77
C.T. Vol.

3083b

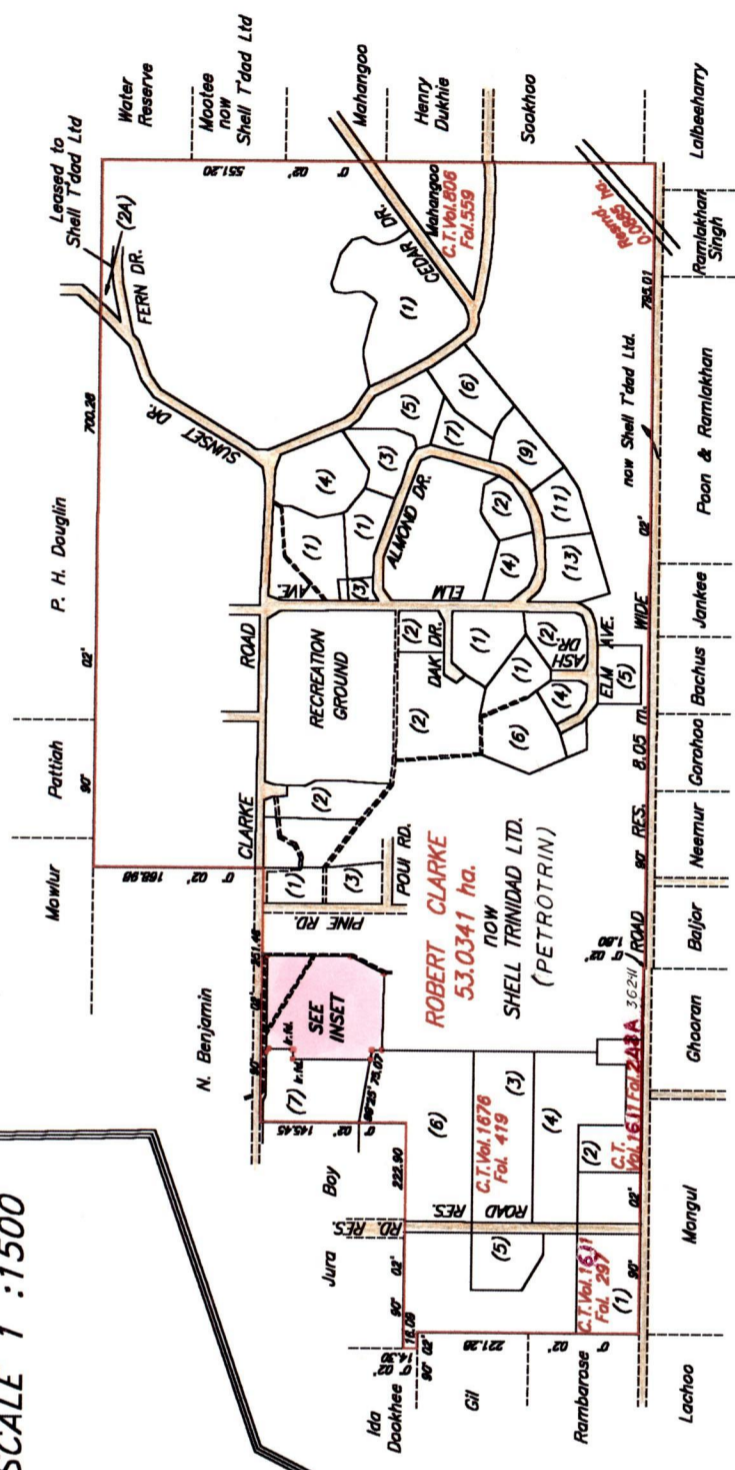
SEE PLAN PK 87

INSET

SCALE 1 : 1500



| No. | AREAS | Vol. | NAMES |
|---------------|------------------------|------|------------------------|
| 1 | 1856.8 m ² | | |
| 3 | 2141.0 m ² | | |
| 1 | 4030.4 m ² | | |
| 2 | 1781.6 m ² | | |
| 3 | 492.7 m ² | | |
| 4 | 1996.3 m ² | 2275 | 519 D. & D. Colthrust |
| 5 | 2549.7 m ² | 2275 | 547 C. Codrington |
| 6 | 4686.0 m ² | 2275 | 491 H.J. DeVerteuil |
| 1 | 4065.3 m ² | 2275 | 505 E.J. DeVerteuil |
| 2 | 2605.0 m ² | 2275 | 561 H. Tahal |
| 1 | 2921.8 m ² | 2126 | 347 D.D. Mahabir |
| 2 | 3109.7 m ² | | |
| 1 | 2848.5 m ² | | |
| 2 | 2226.2 m ² | | |
| 3 | 2947.8 m ² | 2292 | 47 G.R. Managoo |
| 4 | 2556.2 m ² | | |
| 5 | 3739.8 m ² | 2275 | 477 E. & J. Talma |
| 7 | 1967.9 m ² | | |
| 9 | 3168.4 m ² | | |
| 7 | 3168.4 m ² | | |
| 11 | 2739.1 m ² | | |
| 13 | 3798.6 m ² | | |
| 1 | 11912.6 m ² | 2146 | 55 D. A. Herrera |
| SUNSET DR. 2A | 740.7 m ² | 2836 | 31 Eric Decle |
| 2 | 3608.7 m ² | | |
| 4 | 5258.8 m ² | | |
| 6 | 3989.4 m ² | | |
| 7 | 6747.1 m ² | 2275 | 533 J. & J. Pambellone |



SCALE 1 : 7500

Approved *[Signature]*
by Director of surveys 94.03.20

Bearings are based on Solar Observations
Note: To obtain compass bearing subtract 2 minutes in the Ward of Siparia
PLAN of a Parcel of land coloured pink containing one point one two nine six hectares
Surveyed by me, with due authority, in September 1998.
I certify that I have complied with rule 76 under section 14(2)(d) of the
Land Surveyors' Ordinance 1952, and that this plan is correct.
Checked by *[Signature]* 10/10/06
Entered..... Land Surveyor, Trinidad and Tobago..... 17.....1999

GN
Cassini

Original Bk. 390 fol. 58
Plan R.C. 38

