

B No 2320

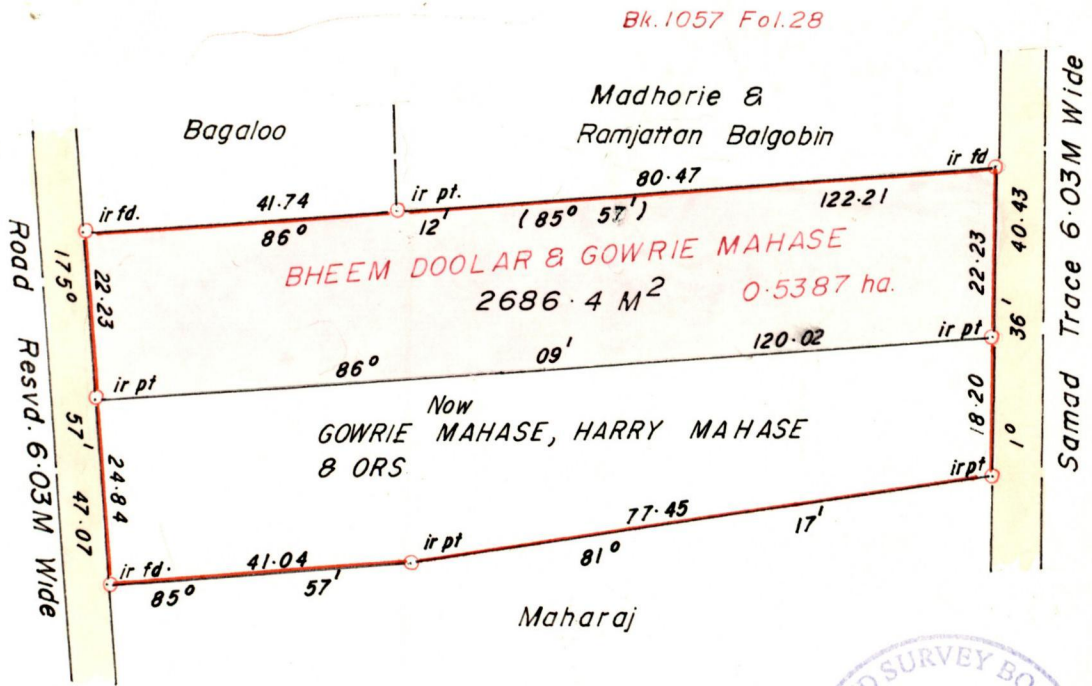
R.P.O. Vol. C.T. Vol. 2225

Fol. 271

Ward of Point a Pierre County of Victoria Cadastral Sheet D 22 B 43 F / 3/c

G N

Cassini



Approved

[Signature]
 Director of Surveys
 99.10.02

SCALE 1 1000

Note: To obtain compass bearings add/subtract minutes Distances are in Metres

PLAN of a Parcel of land coloured Pink in the Ward of Point a Pierre
 Containing Two thousand six hundred and eighty six point four square metres
 Surveyed by me, with due authority, in October 1998

I certify that I have complied with rule 76 under section 14(2)(d) of the
 Land Surveyors' Ordinance, 1952, and that this plan is correct.

Checked by *[Signature]* 99/09/15 *[Signature]*

Entered Land Surveyor, Trinidad 24th May 19 99
 and Tobago

Original See Bk. 710 Fol. 15

