

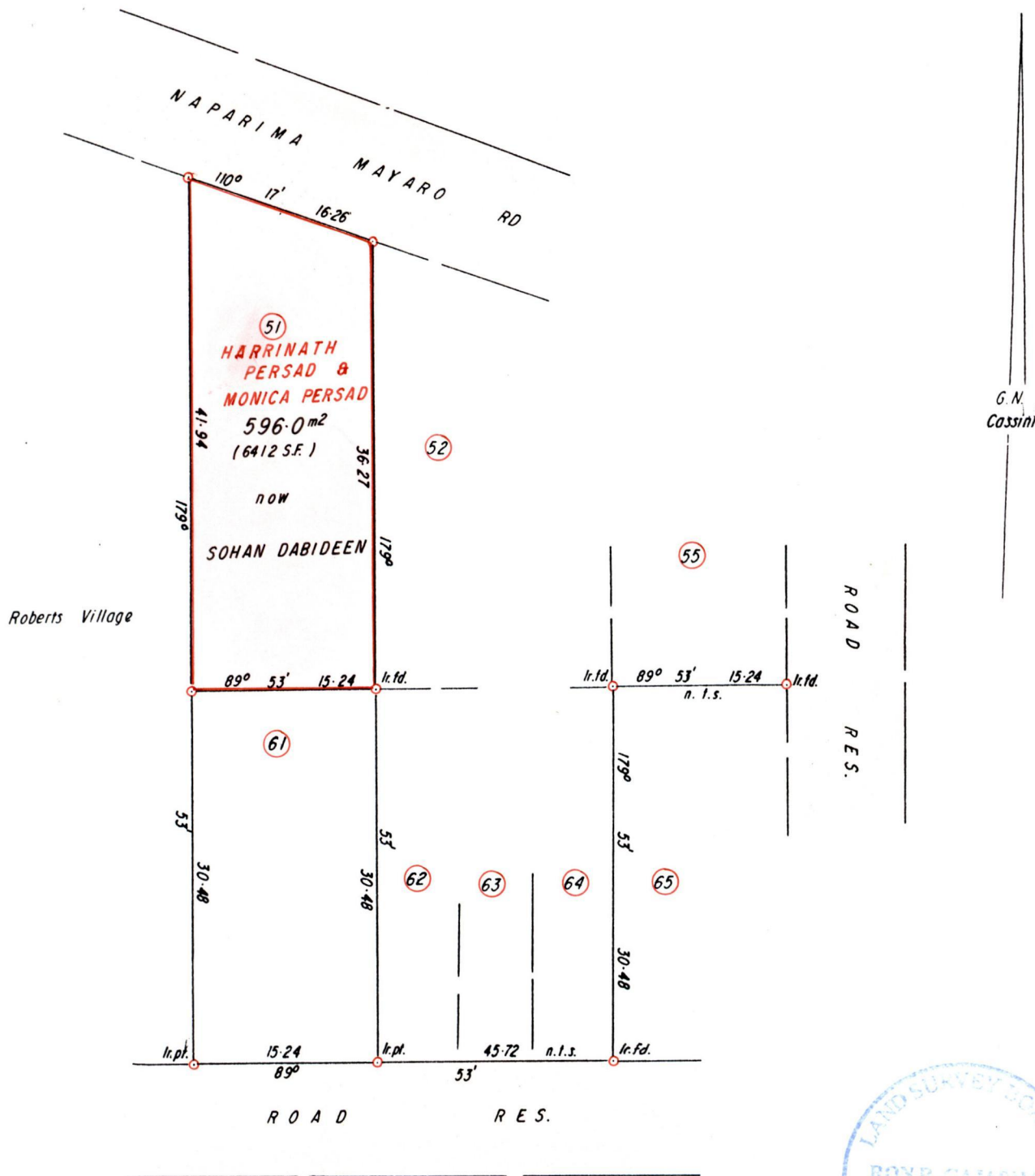
R.P.Q. Vol. 414 fol. 101
C.T. Vol. 2839 fol. 141

Cadastral Sheet 54F, H.I.J.
2/d

Ward of Ortoire

County of Victoria

PLAN K.P. 10



Approved *[Signature]*
 Director of Surveys
 29.07.99

Scale 1 / 500
 Distances are in metres

To obtain compass bearings add 7 minutes
 Bearings are based on Solar Obs.

PLAN of a parcel of land coloured pink in the Ward of Ortoire
 Containing five hundred and ninety six point zero square metres
 Surveyed by me with due authority in May 1999
 In accordance with Rule 25 (1) of the Land Surveyors' Regulations 1998, I certify that this plan is correct.

Checked by *[Signature]* 29.09.02
 Ent. *[Signature]* Trinidad & Tobago, Land Surveyor
 20/05/99

Original Bk. 382 fol. 267

