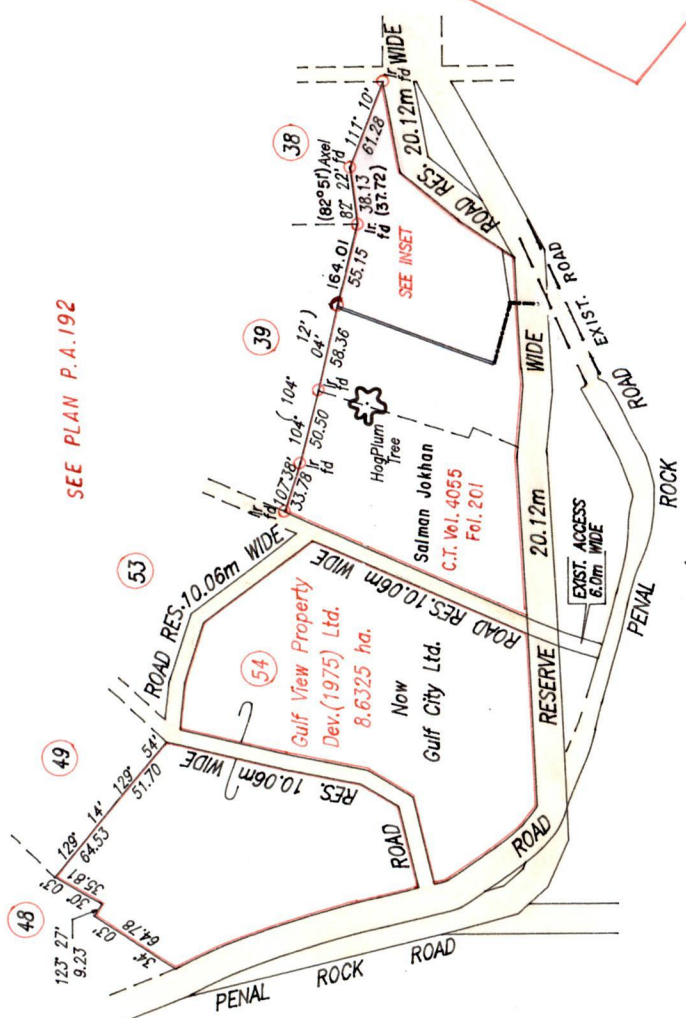


Ward of Siparia  
County of St. Patrick  
Cadastral Sheet G.18.H. 73C  
2/8

Fol. 241  
Fol. 179

R.P.O. Vol. 152  
C.T. Vol. 2471



SEE PLAN P.A.192

Approved *[Signature]*  
Director of Surveys  
99-9-98

○ Denotes Iron put except where otherwise stated  
Bearings are based on solar Observations

PLAN of a Parcel of land coloured pink in the Ward of Siparia  
Containing one point zero three five nine hectares  
Surveyed by me, with due authority, in November 1997 & February 1998

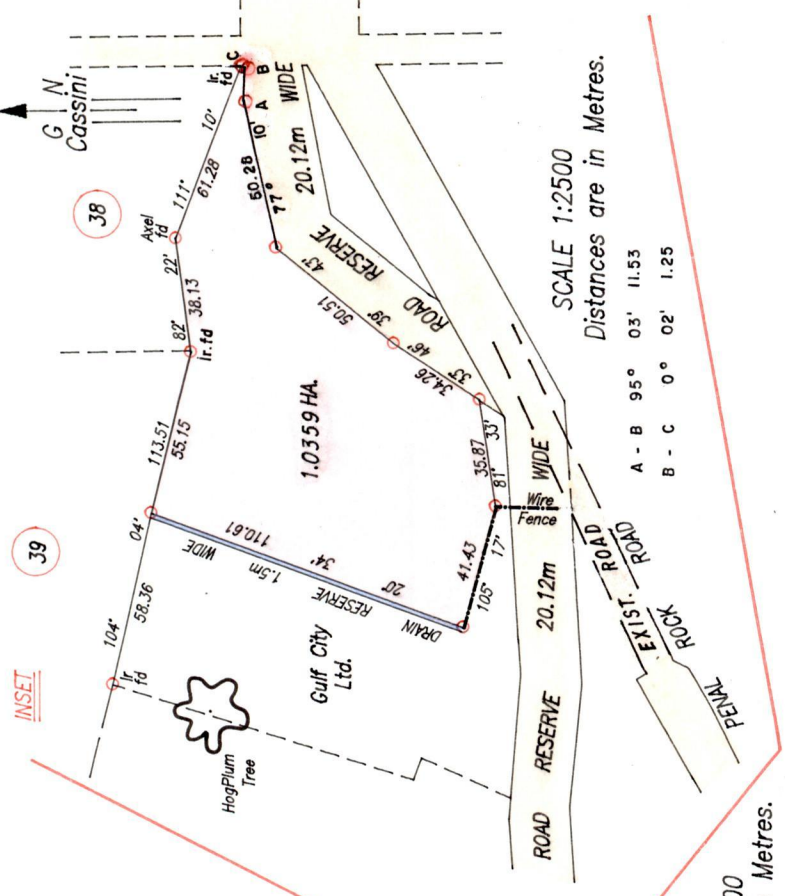
I certify that I have complied with rule 76 under section 14(2)(d) of the Land Surveyor's Ordinance 1952, and that this plan is correct.

Checked by: *[Signature]* 99/09/03

Entered . . . . .

Trinidad & Tobago Land Surveyor. : 15/02/1999

PATH = 386 C:\GULFCITY\GAB.DWG



SCALE 1:2500  
Distances are in Metres.

A - B 95° 03' 11.53  
B - C 0° 02' 1.25

SCALE 1:5000  
Distances are in Metres.

Original Survey Plan PA.192

