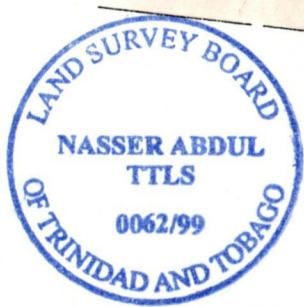
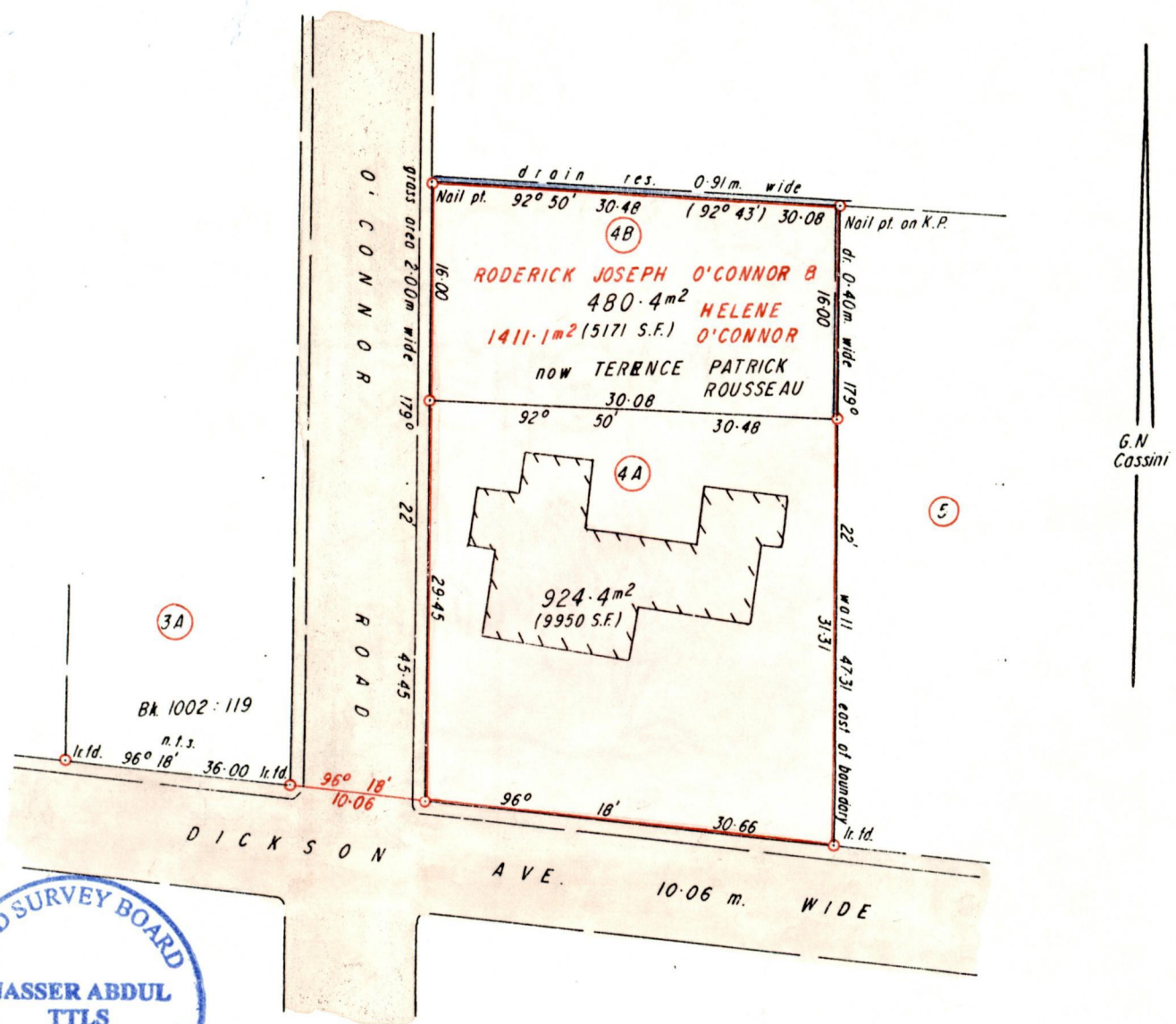


A No 6297  
R.P.O. Vol. fol.  
C.T. Vol. 1339 fol. 219

Cadastral Sheet  $\frac{13D}{1/a}$ , A.14.P.  
Ward of Diego Martin  
County of St. George  
DIEGO MARTIN



Approved *[Signature]*  
Director of Surveys  
99-9-22

Bk. 923 : 72

SCALE 1 / 500

○ Denotes lr. pt. add  
Bearings are based on Solar Obs.  
Note: To obtain compass bearing subtract minutes Distances are in metres  
PLAN of 2 Parcelsof land coloured pink in the Ward of Diego Martin  
Containing together one thousand four hundred and four point eight square metres  
Surveyed by me, with due authority, in January 1999 for  
In accordance with Rule 25(1) of the Land Surveyors' Regulations 1998, I certify that this plan is correct.  
Checked by *[Signature]* 20<sup>th</sup> July 1999  
Ent. on..... Land Surveyor, Trinidad..... 19.....  
and Tobago

Original Survey bk: 923 fols. 72 & 148

