

Crown
then
Lucian Alexander

90° 07' 80.47

Crown
then
Lucian Alexander

RUDY BISNATH SUPERSAD
& ORS

2.0234 ha.

Arthur Ifill
then
Emelia Bodie
&
Emmanuel Bodie

210.42
WIDE
4.02m
TRACE
FRANCIS
TRACE
07'
0°

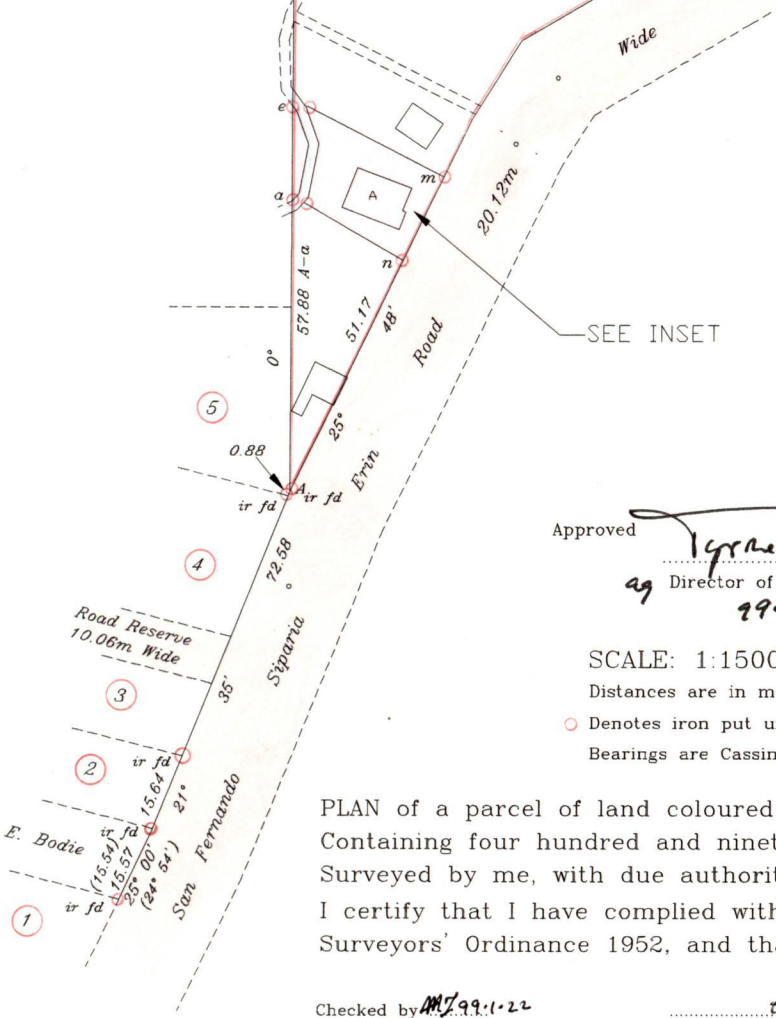
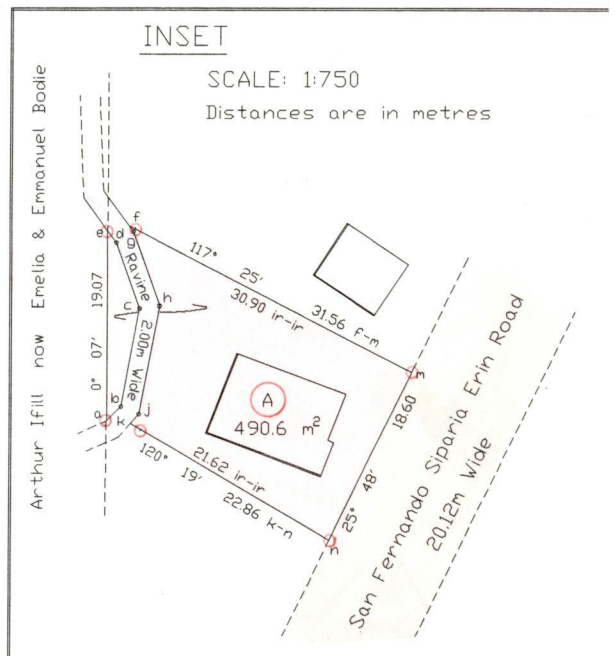
R.P.O. Vol. 198 Fol. 485

C.T. Vol. 3166 Fol. 213

Ward of Erin
County of St. Patrick
Cadastral Sheet G.16.L. 73A
3/a

LEGEND		
a-b	41° 02'	2.15
b-c	10° 28'	9.90
c-d	340° 30'	6.96
d-e	323° 32'	1.43
e-a	180° 07'	19.07
f-g	143° 32'	0.75
g-h	160° 30'	7.79
h-j	190° 28'	10.98
j-k	221° 02'	1.32
e-f	79° 42'	2.23
a-k	96° 22'	2.43

G.N.
Cassini



Approved

[Signature]
Director of Surveys
29.1.26

See Bk. 482 Fol. 386

SCALE: 1:1500

Distances are in metres

○ Denotes iron put unless otherwise stated

Bearings are Cassini Grid Based on Solar Observations

PLAN of a parcel of land coloured pink in the Ward of Erin
Containing four hundred and ninety point six square metres
Surveyed by me, with due authority, in August 1996

I certify that I have complied with rule 76 under Section 14(2)(d) of the Land
Surveyors' Ordinance 1952, and that this plan is correct.

Checked by *[Signature]* 19.1.22

Entered

[Signature]
Land Surveyor, Trinidad & Tobago

16/01/1997

original Bk 482 fol. 386

