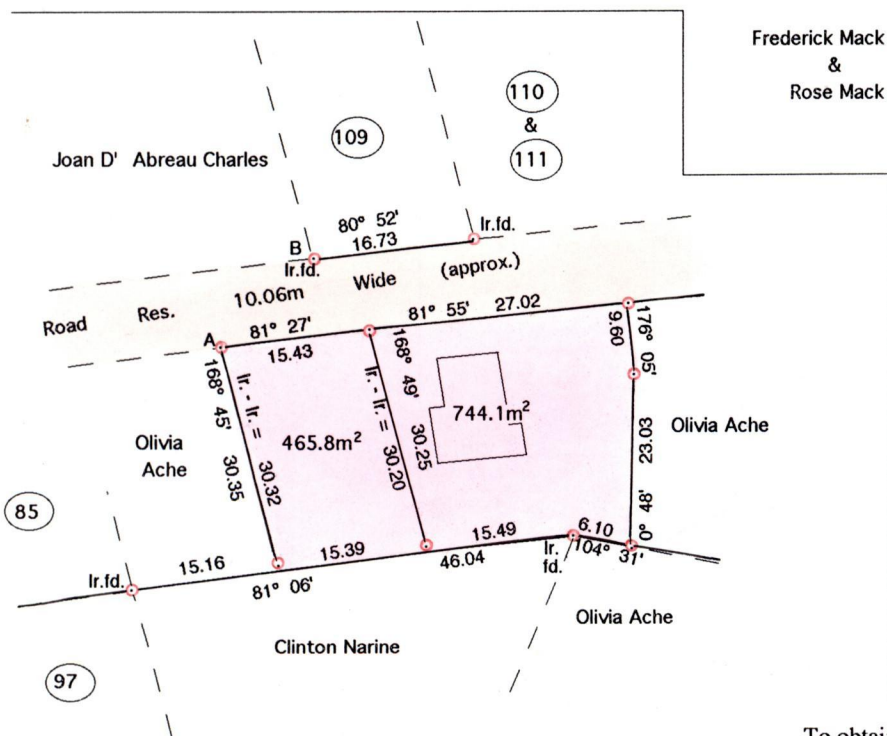
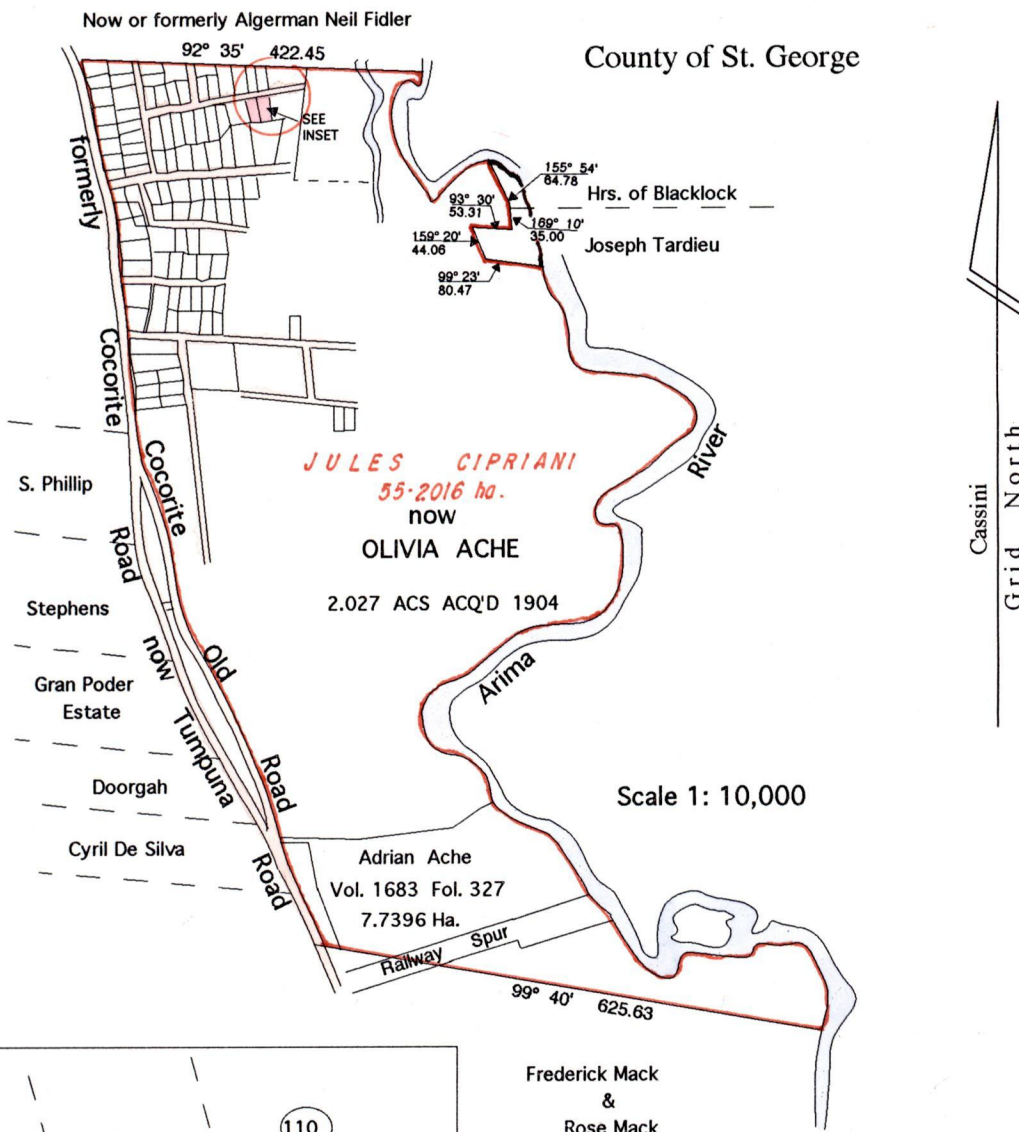


R.P.O. Vol. 11 Fol. 389
C.T. Vol. 1149 Fol. 141

Cadastral Sheet B. 25 A. 24C
2/c

Borough of Arima

County of St. George



To obtain compass bearings add 10 minutes
Bearings are Cassini Grid based on Solar Obs.

○ Denotes Iron Put unless otherwise stated.

SCALE 1:1000

Distances are in metres

Approved *[Signature]*
Director of Surveys
99-5-26

PLAN of 2 Parcels of land coloured pink in the Borough of Arima

Containing together one two zero nine point nine square metres

Surveyed by me, with due authority, in March 1998 at the request of Louis Ache

I certify that I have complied with rule 76 under section 14 (2) (d) of the Land Surveyor's Ordinance 1952 and that this plan is correct.

Checked by *[Signature]*
Entered on

Land Surveyor, Trinidad & Tobago *6th October* 1998

Original Plan x.D.77

