

14
\$10.00

1236

5941

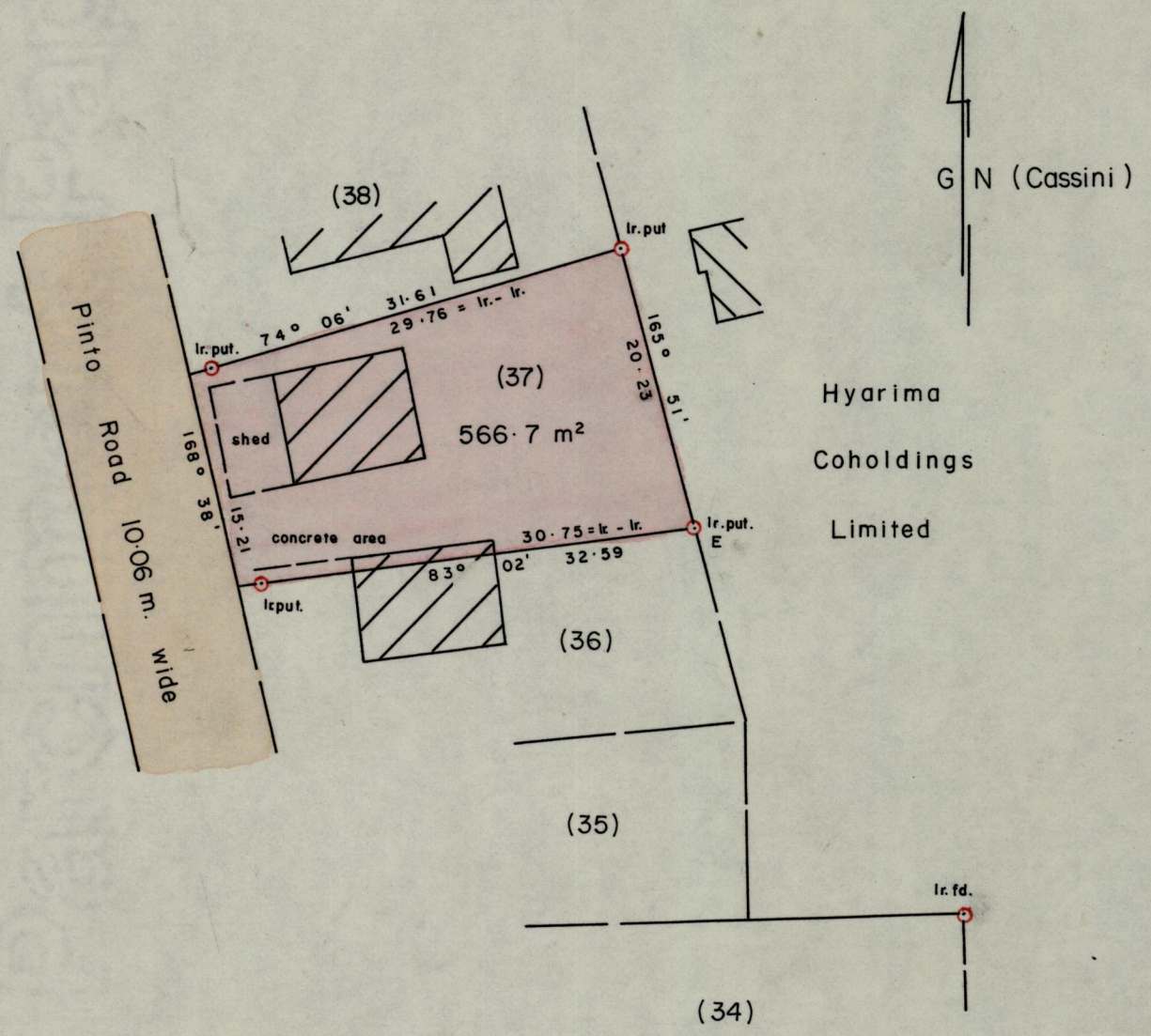
L. and S.—53

Cadastral Sheet $\frac{24C}{2/c}$ (B.20.M)

Borough ~~Ward~~ of Arima

County of St. George

171627



Original Survey Plan A.N.138

E - Ir. fd. 152° 58' 44.16 (not to scale)

Bearings are based on solar observations .
add

SCALE 1 : 500

Note : To obtain compass bearing subtract 11 minutes Distances are in METRES .

PLAN of a Parcel of land coloured pink in the ~~Ward~~ Borough of Arima

Containing five hundred and sixty - six point seven square metres .

Redefined Surveyed by me, with due authority, in August 1997 for Hyarima Coholdings Limited .

NOTED ON PLAN A.N.138
24/3/98
S.H.B.

Paul Williams

ENTERING CHECKED BY Land Surveyor, Trinidad..... October 08.....1997
and Tobago

G.P., Tr./To.—C1763—50,000—6/86

Recvd 98-3-5