

16.58

1236

89

L. and S.—53

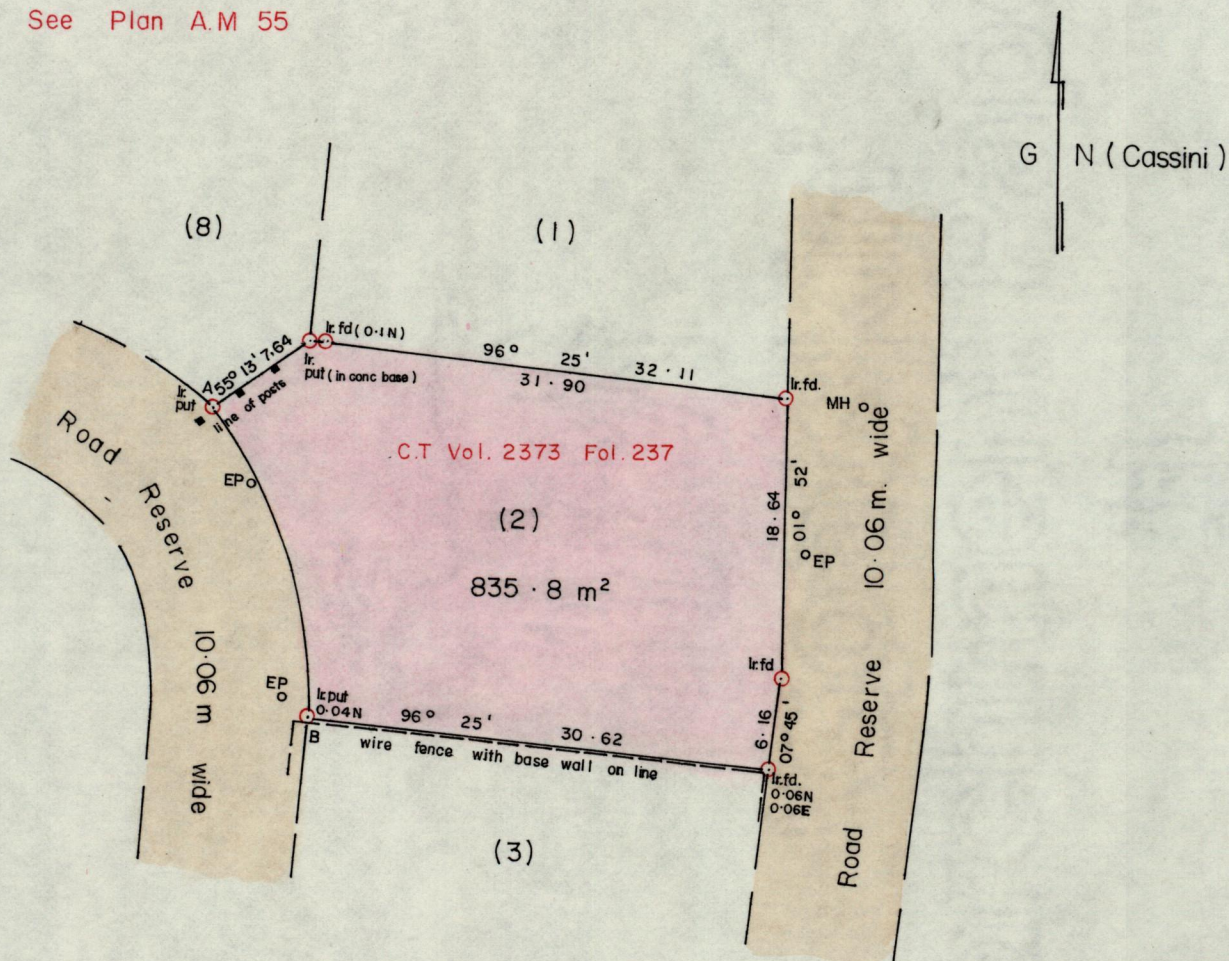
146584

Cadastral Sheet $\frac{13D}{17a}$ (A.14.P)

Ward of Diego Martin

County of St. George

See Plan A.M 55



A - B 162° 54' 21.49

MH - Manhole
EP - Electricity Pole

Original Survey A.M. 55

Bearings are based on Solar Observations

SCALE 1 : 500

Note: To obtain ^{true} ~~compass~~ bearing subtract 3 minutes Distances are in METRES

PLAN of a Parcel of land coloured pink in the Ward of Diego Martin

Containing eight hundred and thirty-five point eight square metres

Redefined Surveyed by me, with due authority, in June 1994 for Uckleen Chan Poon

ENT'D ON $\frac{13D}{17a}$ 96.01.31 *Paul William*

CHECKED BY *ALC 96.01.31* Land Surveyor, Trinidad June 21 1994

NOTED

G.P., Tr./To.—C1763—50,000—6/86

Recvd 96.01.09

LANDS AND SURVEYS VAULT RECORDS