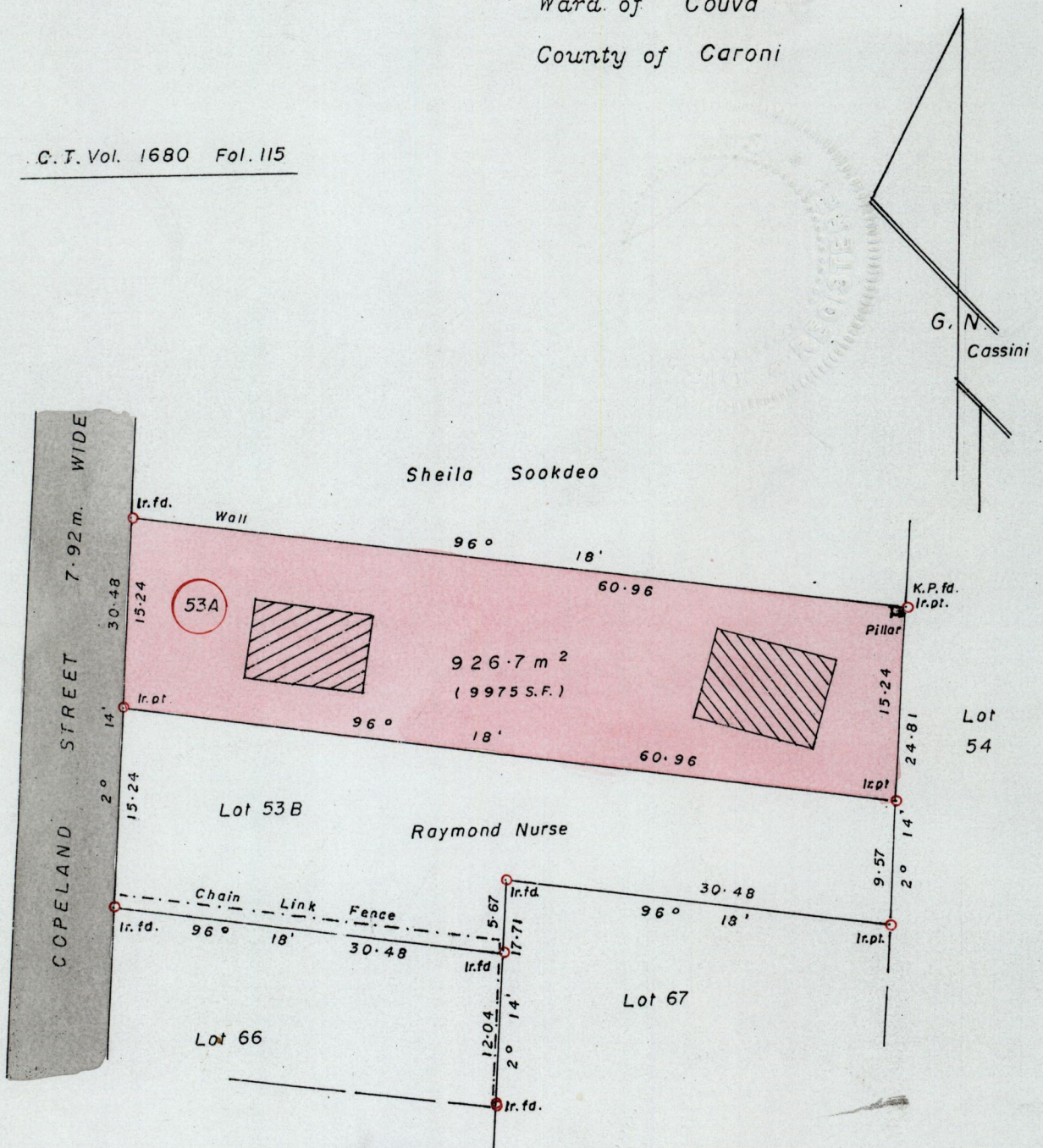


Cadastral Sheet D.II.P. $\frac{43B}{4/a}$

Ward. of Couva

County of Caroni

C.T. Vol. 1680 Fol. 115



SCALE : 1/500

Note: To obtain compass bearings subtract 4 minutes.

Distances are in metres

PLAN of a Parcel of land coloured pink in the Ward of Couva
 Containing nine hundred and twenty six point seven square metres
 Redefined
~~Surveyed~~ by me with due authority in May 2002 for Roopnarine Sookdeo.
 In accordance with ^{Regulation} ~~Rule~~ 25(1) of the Land Surveyors' Regulations 1998,
 I certify that this plan is correct.

Checked by VDF.02-9-13

Arnold. A. F. Ramon Fortune

Entered Computer sheet 43B

Trinidad & Tobago Land Surveyor *28th MAY* 2002.