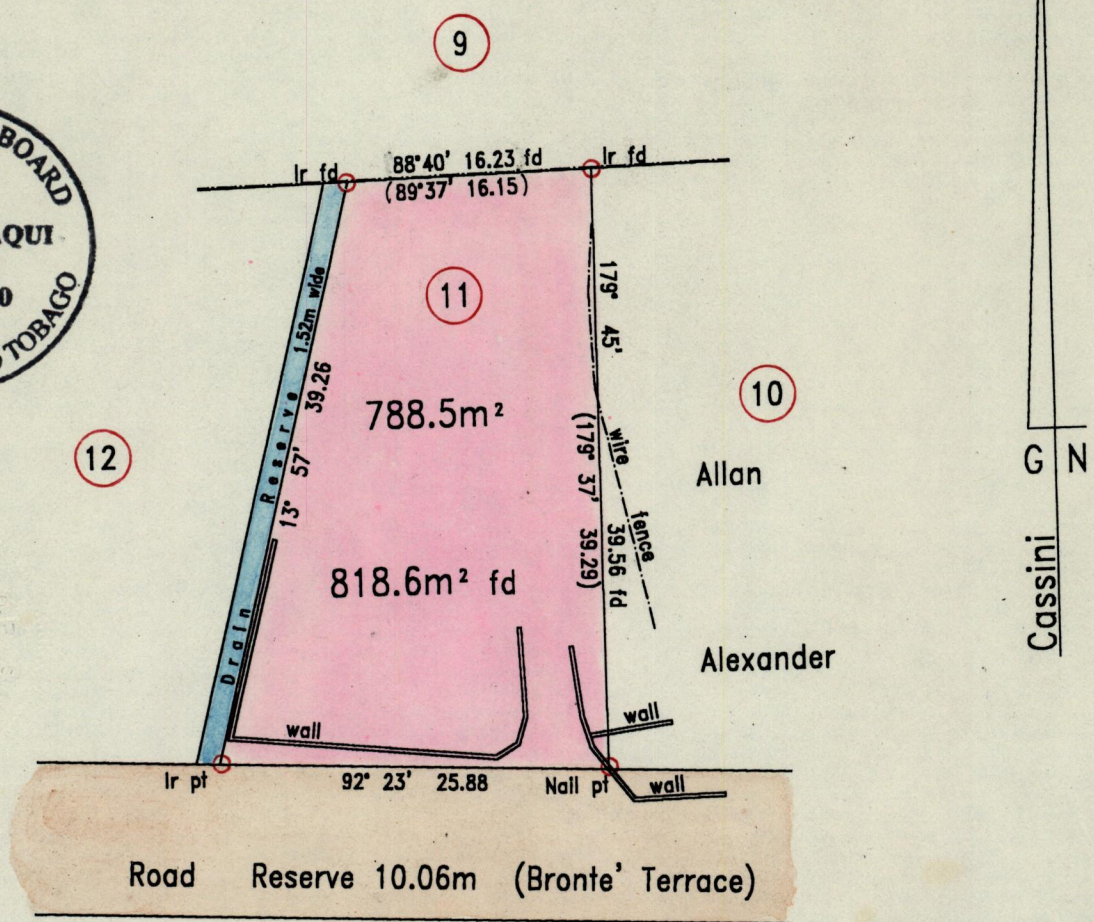
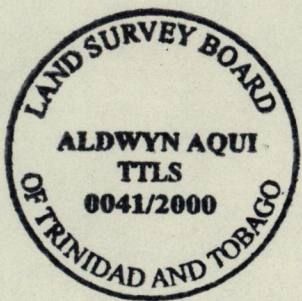


1236

Cadastral Sheet B 18 | ^{14D}/_{37c}
Ward of Tacarigua
County of St. George

476

R.P.O. Vol Fol
C.T. Vol. 1947 Fol. 51
141



Reference
PLAN D.L. 12
SCALE 1:500
Distances are in metres

Approved
.....
Director of Surveys

To obtain compass bearings add 04 minutes

Plan of a parcel of land coloured pink in the Ward of Tacarigua
Originally containing seven hundred and eighty eight point five square metres
Now found to contain eight hundred and eighteen point six square metres
Re-defined by me with due authority in April 2000 for Carlton Bruce
In accordance with Rule 25(1) of the Land Surveyors Regulations 1998
I certify that this plan is correct.

Checked by DW 13/11/2000

A. Aquil T.T.L.S.
2000.5.12

Entered on 8181.10/11/2000 G.M.B.

16.05.2000