

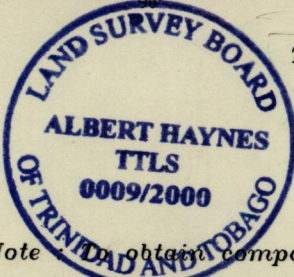
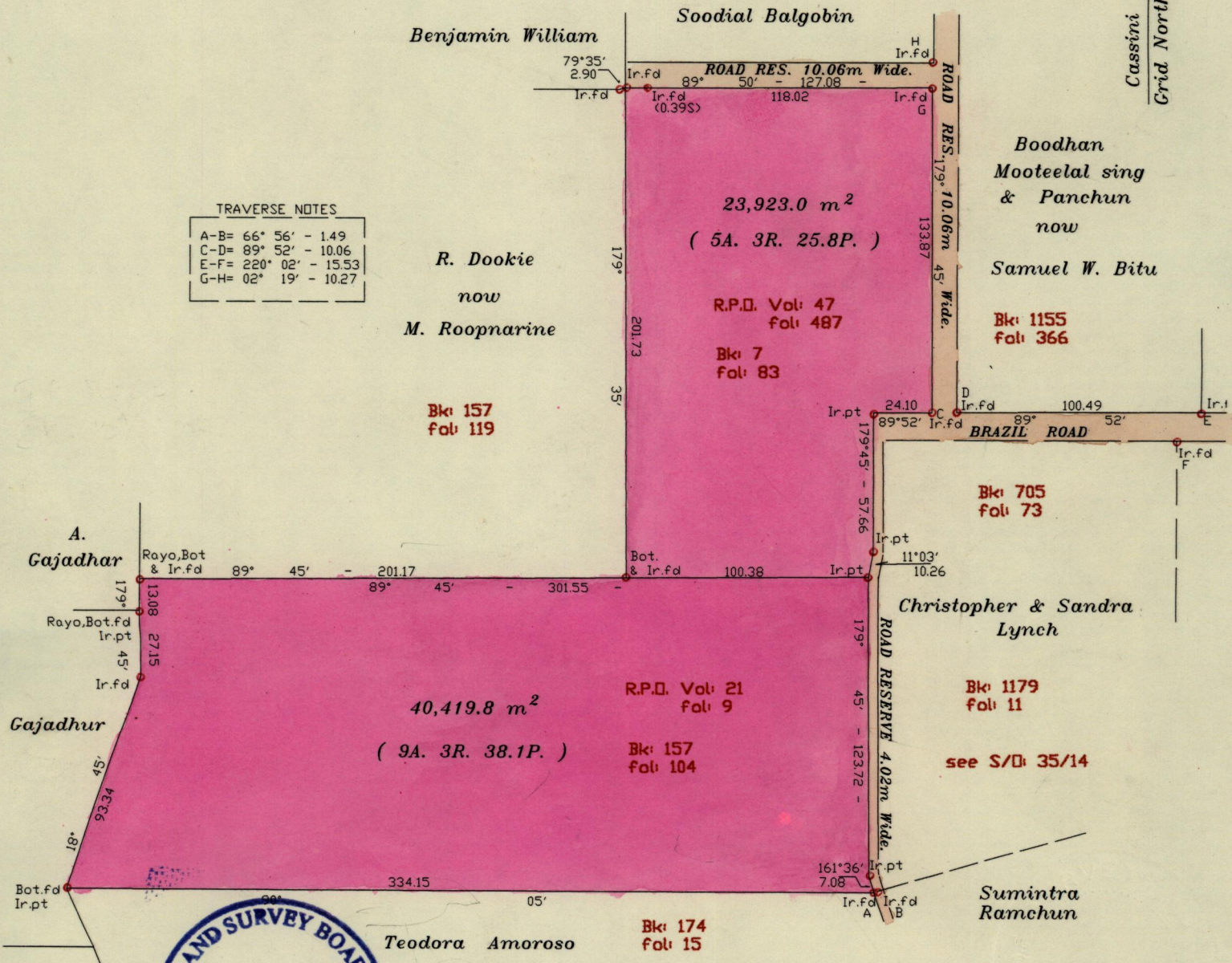
1236

158

Cassini Grid North

TRAVERSE NOTES

A-B=	66° 56'	-	1.49
C-D=	89° 52'	-	10.06
E-F=	220° 02'	-	15.53
G-H=	02° 19'	-	10.27



SCALE: 1:2500

Note: In obtaining compass bearings add 15 minutes Distances are in Metres.

PLAN of two parcels of land coloured pink in the Ward of Tamana Containing together six point four three four three hectares. (15A. 3R. 23.9P.) Redefined by me, with due authority, in June, 1999 for Mary Williams. In accordance with rule 25 (1) of the Land Surveyors Regulations 1998, I certify that this plan is correct.

ENTERED ON ^{25E}/_{4/a} 12/6/2000 GMB.

Entering Albert Haynes
CHECKED BY DD 12/6/2000

Land Surveyor, Trinidad & Tobago 30th March 2000
2000.4.10