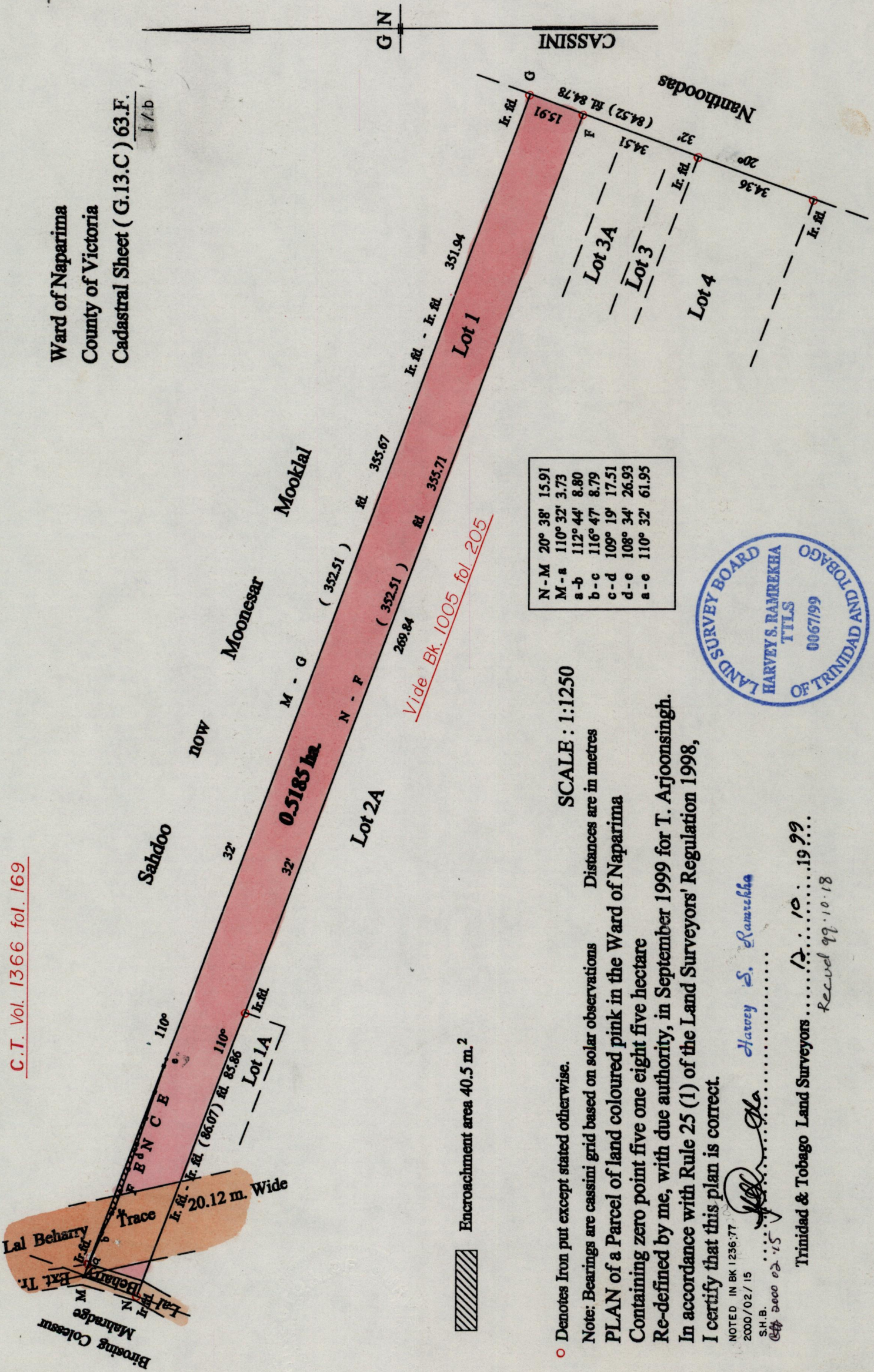


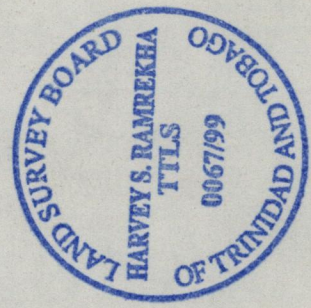
C.T. Vol. 1366 fol. 169

Ward of Naparima
County of Victoria
Cadastral Sheet (G.13.C) 63.F.
I/b



Vide Bk. 1005 fol. 205

N-M	20° 38'	15.91
M-a	110° 32'	3.73
s-b	112° 44'	8.80
b-c	116° 47'	8.79
c-d	109° 19'	17.51
d-e	108° 34'	26.93
s-e	110° 32'	61.95



SCALE : 1:1250

Distances are in metres

○ Denotes Iron put except stated otherwise.

Note: Bearings are cassini grid based on solar observations

PLAN of a Parcel of land coloured pink in the Ward of Naparima

Containing zero point five one eight five hectare

Re-defined by me, with due authority, in September 1999 for T. Arjoonsingh.

In accordance with Rule 25 (1) of the Land Surveyors' Regulation 1998,

I certify that this plan is correct.

NOTED IN BK 1236:77
2000/02/15
S.H.B.
049 3000 02-15

Harvey S. Ramrekha

Trinidad & Tobago Land Surveyors 12.10.1999

Rec'd 99.10.18

Encroachment area 40.5 m.²