

C. of T. Vol. 1729 Fol. 89

153

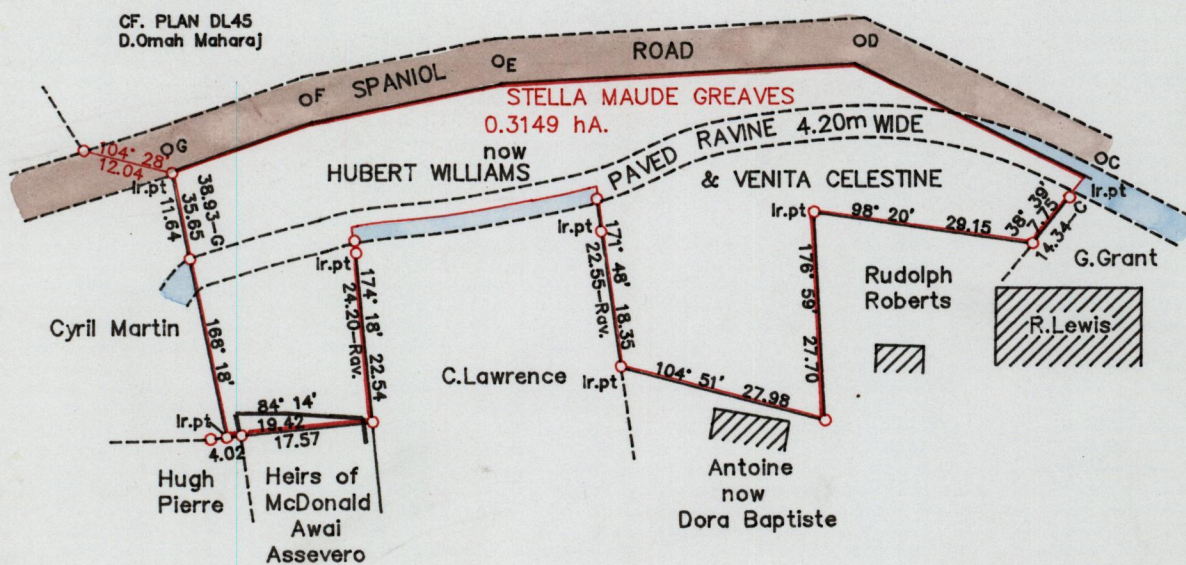
Cadastral Sheet A.14.G

12C
4/b

Ward of Diego Martin

County of St. George

G N
cassini



See Bk.1049:37

SCALE 1/1000

○ Denotes Ir.pt except otherwise indicated.
Note: To obtain compass bearings subtract 4 minutes.

Distances are in metres

PLAN showing certain boundary lines in the Ward of Diego Martin

Redefined by me with due authority in April 1999 for Steve Celestine

In accordance with Rule 25(1) of the Land Surveyors' Regulations 1998

I certify that this plan is correct.

Checked by... 12C
4/5/3

Entered... 99.04.27

Land Surveyor, Trinidad & Tobago
20 April 1999
SCELE

