

114
00 30

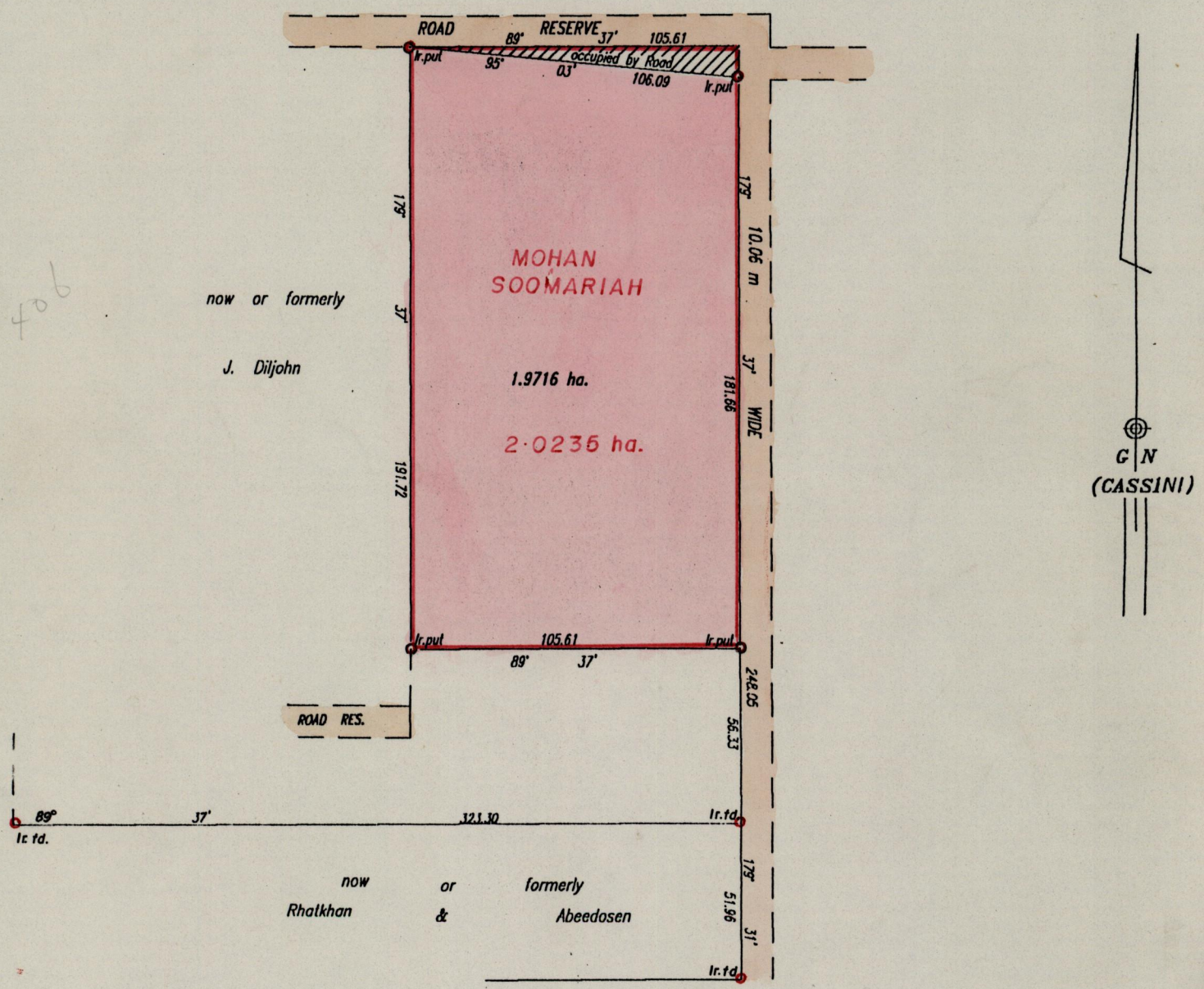
1236

4(1)

R.P.O. Vol. 199 Fol. 271
C.T. Vol. Fol.
Re-destination Plan

Ward of Siparia
County of St. Patrick
Cadastral Sheet (G.18.C) $\frac{73C}{1/6}$

Bk 406



Approved
Director of Surveys

Original Survey Book 406 fol 105

SCALE 1/2000

Bearings are cassini grid based on solar observations. Distances are in metres
Plan of a Parcel of land coloured pink in the Ward of Siparia
Containing one point nine seven one six hectares
Surveyed by me with due authority, in July, 1996
I, certify that I have complied with rule 76 under section 14 (2)(d) of the
Land Surveyors' Ordinance 1952, and that this plan is correct.

Checked $\frac{73C}{1/6}$ BC 97/09/11
Entered.....

W.A. Powell
Land Surveyor, Trinidad & Tobago 13/2 199..7

97.9.11