

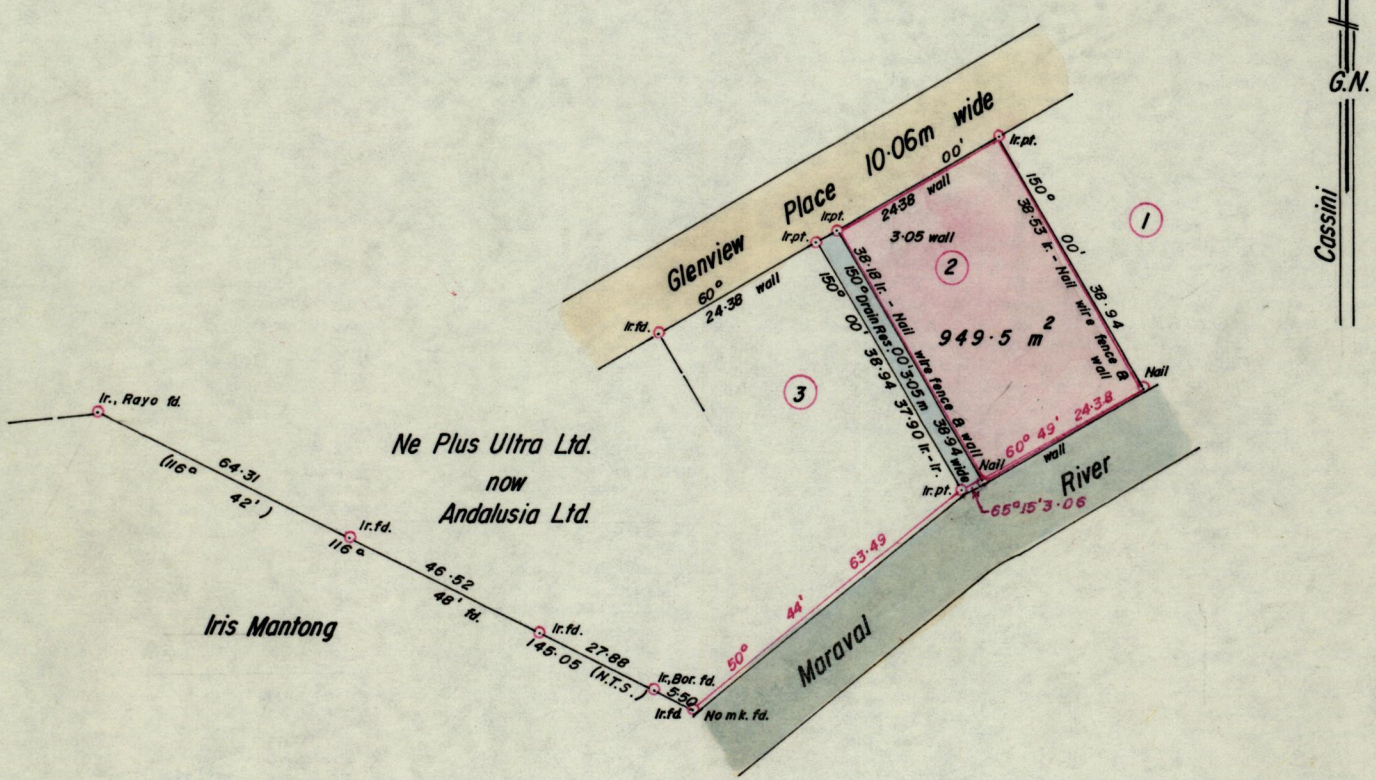
No 9845

R.P.O. Vol.
C.T. Vol. 1659

Fol.
Fol. 150

Ward of *Diego Martin*
County of *St. George*
Cadastral Sheet A.15.N. $\frac{13D}{2/b}$

Vide Plan CM 67 A



Encroachment of 116.8 m² on drain reserve by lot # 3

Approved

Director of Surveys

Original Survey see Plan 67^A

Bearings are Cassini Grid based on Solar Observations

SCALE 1:1,000

Note: To obtain compass bearings add/subtract

minutes

Distances are in metres

PLAN of a Parcel of land coloured pink in the Ward of *Diego Martin*

Containing nine hundred forty nine point five square metres

Surveyed by me, with due authority, in *September 1986*

I certify that I have complied with rule 76 under section 14(2)(d) of the Land Surveyors' Ordinance 1952, and that this plan is correct.

Checked by

Deonaran

Entered $\frac{13D}{2/b}$ 22-01-14

Land Surveyor, Trinidad *29th October 1986*

G.P., Tr./To.—2377—10,000—10/80

NOTE IN PLAN C.M. 67^A

97/07/25

Y. B.

97-7-25