

No

22321

R.P.O. Vol. 166

Fol. 297

C.T. Vol. 1456

Fol. 297

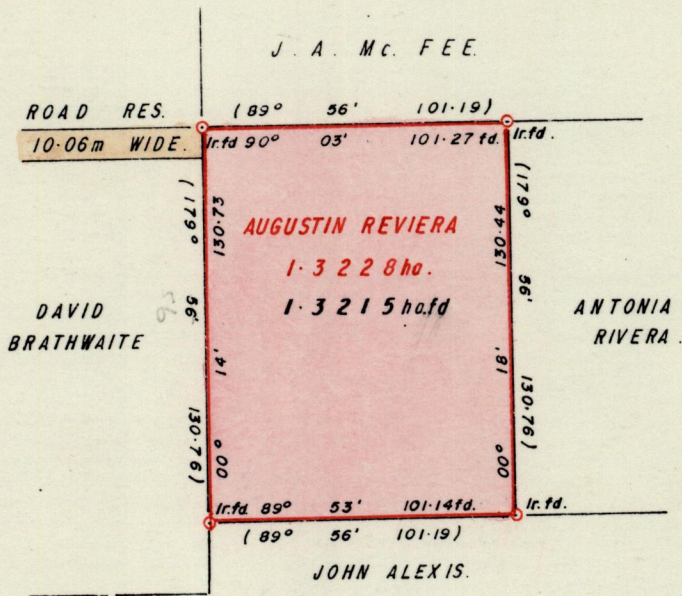
Ward of Moruga.

County of Victoria.

74B

Cadastral Sheet G.20. B. 2/d

Vide Bk. 935 fol. 244



Original Survey Bk.935:244

Approved

Director of Surveys

Bearings are based on Solar Obs. (Cassini Grid.)

SCALE 1:2500

Note: To obtain compass bearings add/subtract

minutes

Distances are in metres.

PLAN of a Parcel of land coloured pink in the Ward of Moruga.

Containing one point three two one five hectares.

~~Surveyed~~ ^{Redefined} by me, with due authority, in Nov, 1994

I certify that I have complied with rule 76 under section 14(2)(d) of the Land Surveyors' Ordinance 1952, and that this plan is correct.

Checked by

A. Deenan

Entered

Land Surveyor, Trinidad

25th November 1994

G.P., Tr./To.-C3265-8,000- /86

Recuel 95.1.24