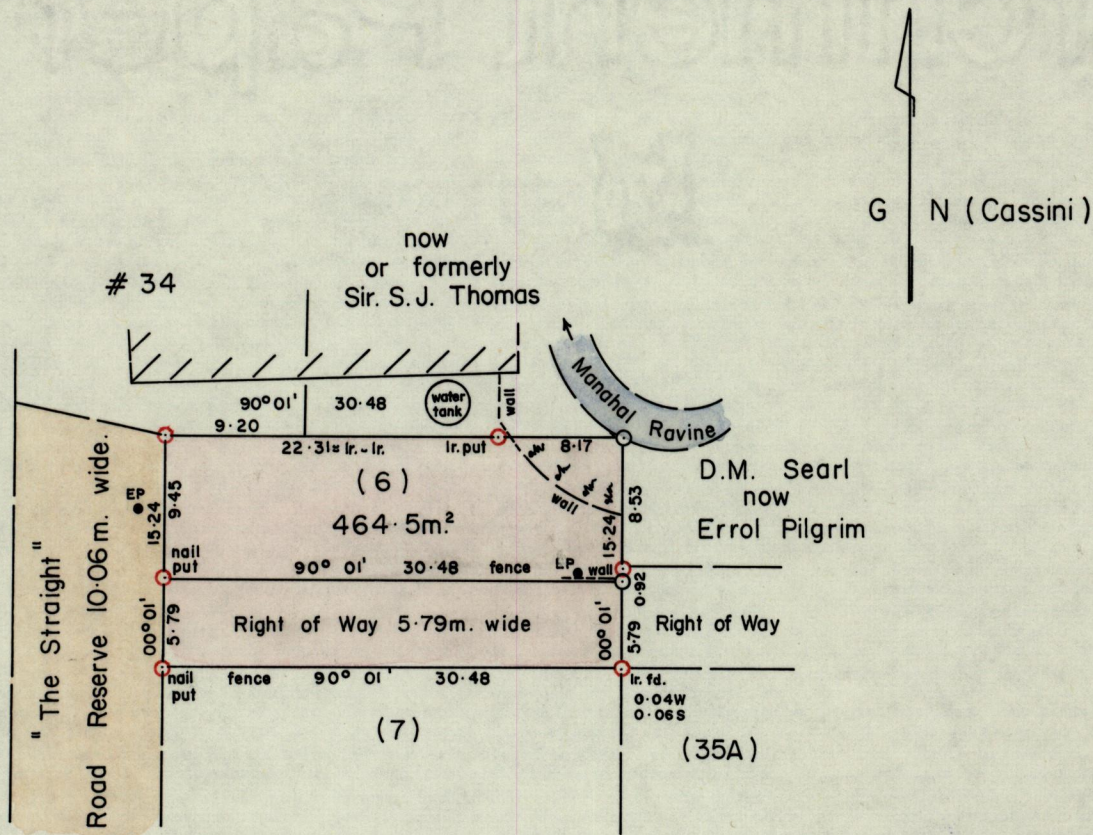


121

Cadastral Sheet $\frac{13E}{3/b}$ (A. 20 . C)

Ward of St. Anns

County of St. George



LP - Light Pole
 EP - Electricity Pole
 - Cutting

RPO Vol. 666 Fol. 371
 C.T. Vol. 1054 Fol. 9

○ Denotes no mark
 ⊙ Denotes Iron found unless otherwise stated
 Bearings are based on Solar Observations

SCALE 1 : 500

Note : To obtain compass bearing subtract minutes Distances are in METRES

PLAN of a Parcel of land coloured pink in the Ward of St. Anns
 Containing four hundred and sixty-four point five square metres.
 Surveyed by me, with due authority, in November 1996 for Terrence Pilgrim

NOTED ON P.A. 57
 97/07/02

Paul William

Y.B.

Land Surveyor, Trinidad Dec 10 1996

97.7.2
Recvd 97.4.29