

No

22321

1236

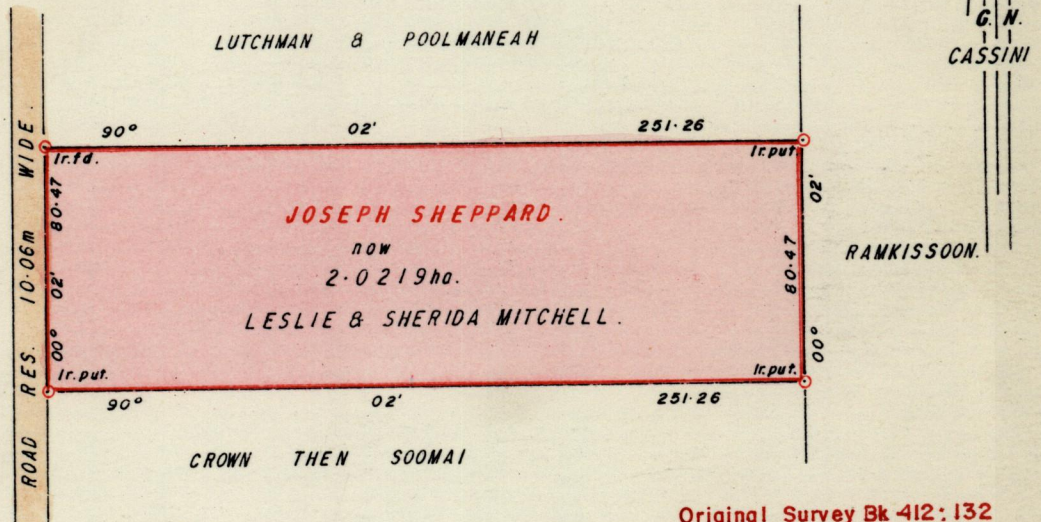
19

R.P.O. Vol. 216  
C.T. Vol.

Fol. 635  
Fol.

Ward of Siparia.  
County of St. Patrick. 73C  
Cadastral Sheet G.18.K. 3/b

Vide Bk. 412 fol. 132



Original Survey Bk 412: 132

Approved

.....  
Director of Surveys

Bearings are based on Solar Obs. (Cassini Grid.)

Note: To obtain compass bearings add/subtract

SCALE 1 / 2500

minutes

Distances are in metres.

PLAN of a Parcel of land coloured pink in the Ward of Siparia.

Containing two point zero two one nine hectares

Redefined  
~~Surveyed~~ by me, with due authority, in Nov, 1994.

I certify that I have complied with rule 76 under section 14(2)(d) of the Land Surveyors' Ordinance 1952, and that this plan is correct.

Checked by .....

*A. Deenan*

Entered .....

Land Surveyor, Trinidad 25<sup>th</sup> November 1994