

1230

128

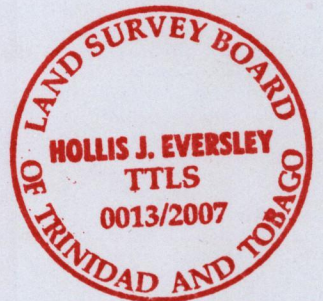
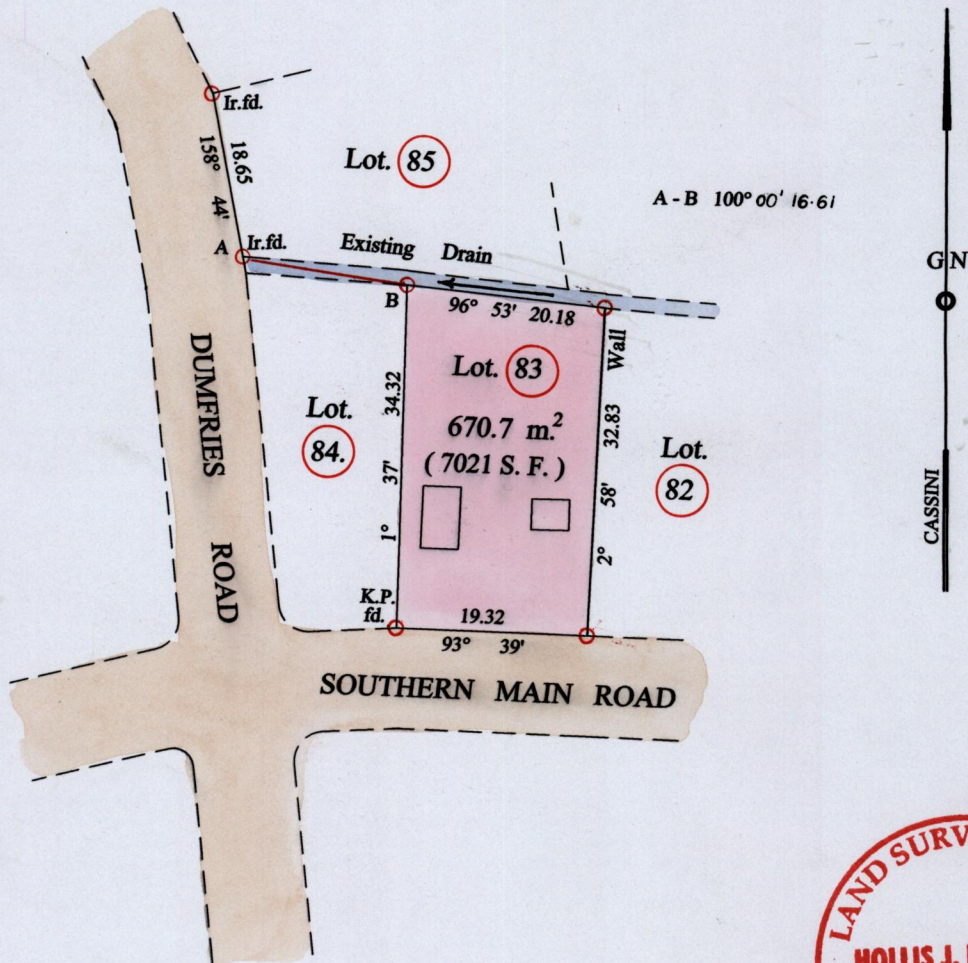
Ward of Naparima

County of Victoria

De 200601957404

Cadastral Sheet (G. 6. M.) $\frac{53 E}{4 / c}$

REDEFINITION SURVEY



Vide Plan X. G. 54

○ Denotes Iron Put Except Stated Otherwise

SCALE 1 : 750

Bearings are Cassini Grid based on Solar Observations Distances are in Metres
PLAN of a Parcel of land coloured pink in the Ward of Naparima
 Containing six hundred and fifty two point three sq metres.
 Re-defined by me, with due authority in, Sept. 2007 for Deolal Rambharack
 In accordance with Regulation 25 (1) of the Land Surveyor's Regulations 1998,
 I certify that this plan is correct.

Trinidad & Tobago Land Surveyor ... 1st September 2007

14P

