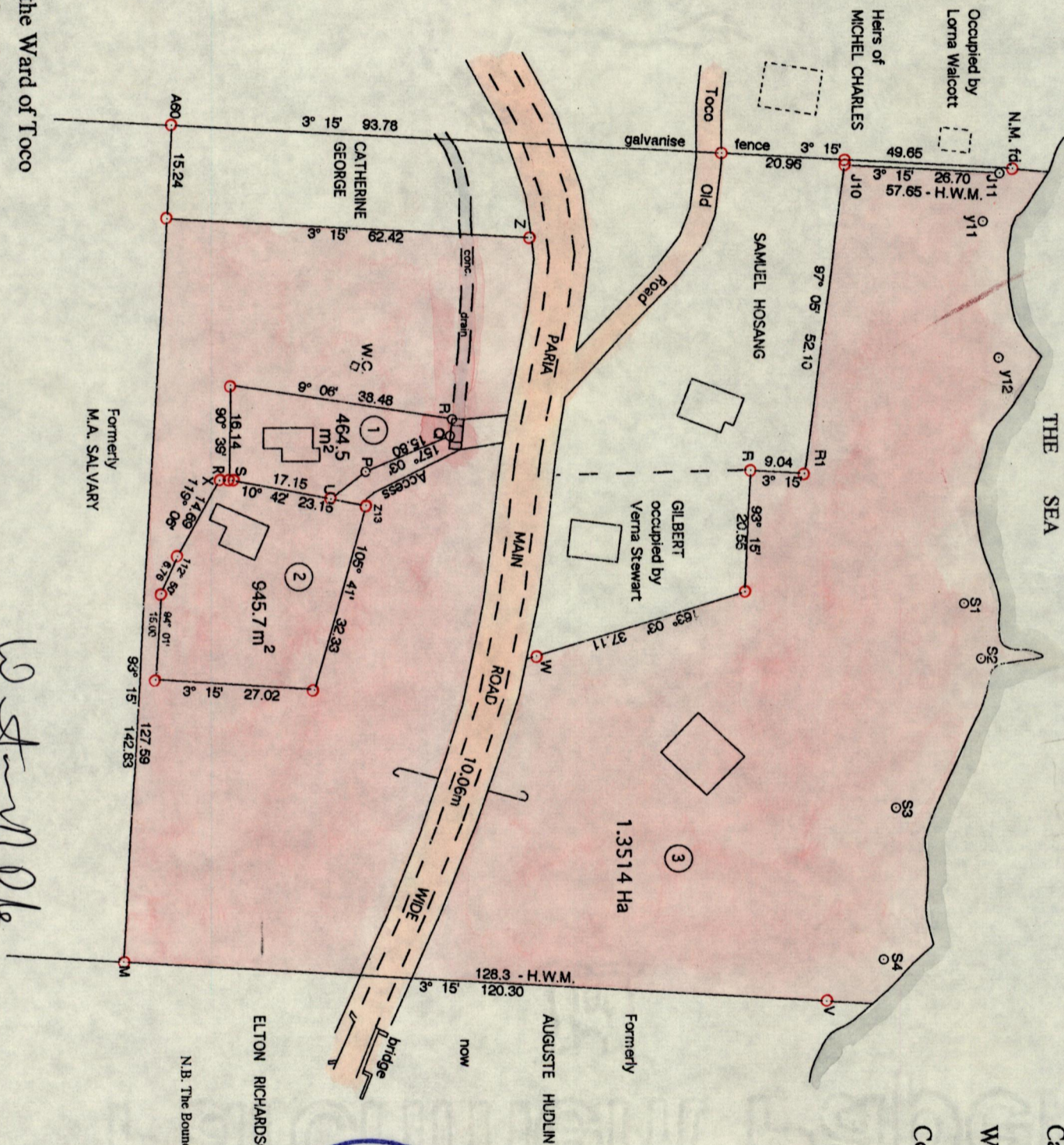


R. D. 1395/1943

Line	Brg.	Dist.
Z - W	89° 03'	71.13
R - Q	95° 15'	2.50
P - U	142° 45'	7.62
R - S	3° 25'	0.48
X - S	3° 25'	2.16
T - S1	88° 30'	20.52
S1 - S2	72° 48'	9.88
S2 - S3	119° 31'	29.48
S3 - S4	94° 40'	26.25
S4 - V	144° 41'	12.20
J11 - Y11	109° 51'	8.63
Y11 - Y12	83° 17'	23.36
Y12 - T	106° 29'	21.26

Vide EH 21
Bk. 123 Fol. 305



PLAN of 3 Parcels of land coloured pink in the Ward of Toco
Containing together one point four nine two four hectares
Surveyed by me, with due authority, in March 1999 at the request of Michael Theodore
in Accordance with Rule 25 (1) of the Land Surveyors' Regulations 1998, I certify that this plan is correct

Winston Doyle
Land Surveyor, Trinidad & Tobago
20th April 2000



Cassini Grid North

N.B. The Boundary line A60 to M was pointed out by Mr. Leonard Stewart
Denotes Iron Put unless otherwise stated
Distances are in metres
Bearings are Cassini Grid based on Solar Obs.

SCALE 1 : 1000

Cadastral Sheet 6C, C.4.G
Ward of Toco
County of St. David

284

127

1236