

1236

124

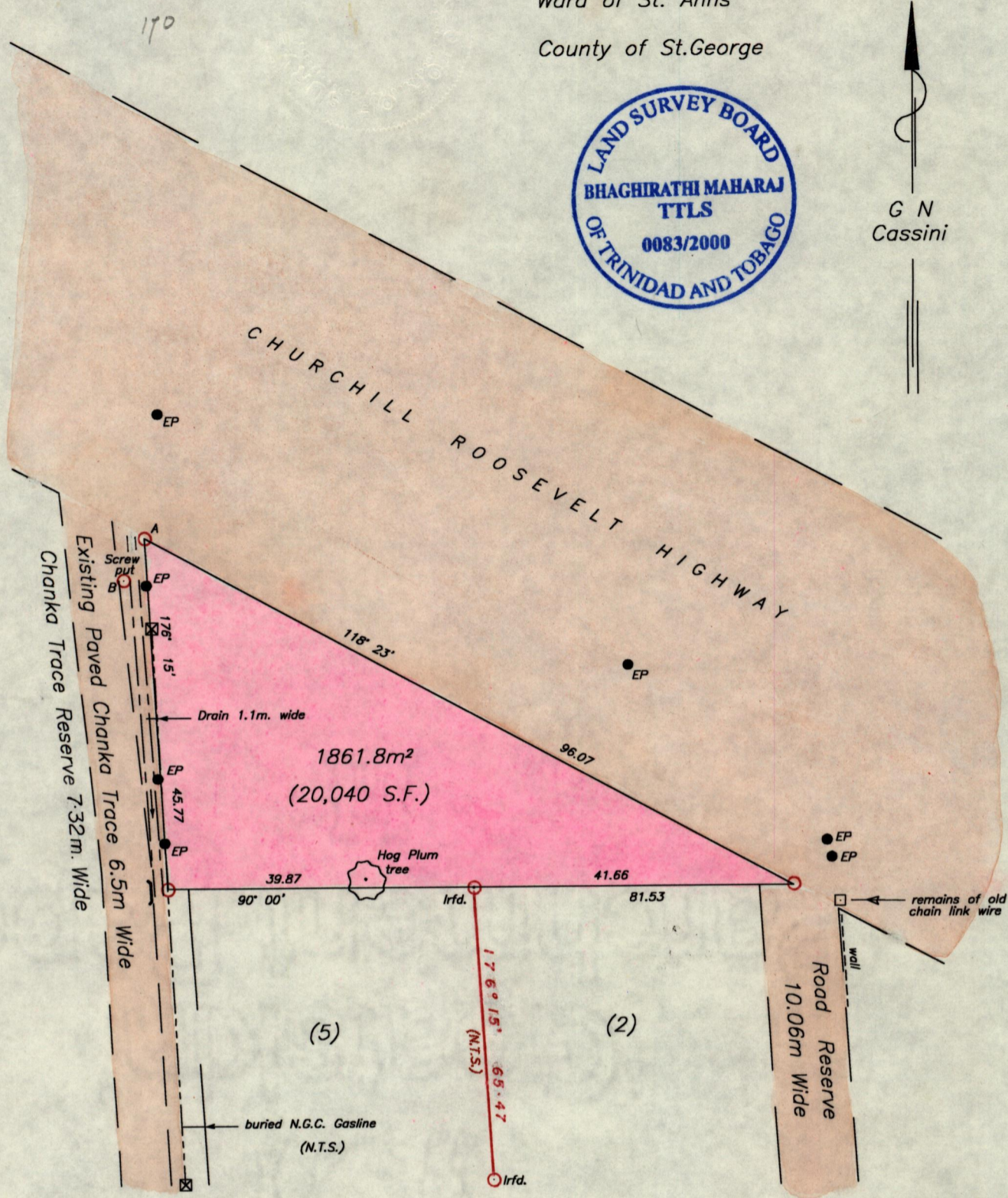
Cadastral Sheet B.22.B 23C
1/c

Ward of St. Anns

County of St. George



G N
Cassini



B - A 26° 30' 6.09

- — Culvert
- ☒ — N.G.C. Gasline marker
- EP — Electricity pole

○ Denotes Iron put unless otherwise stated
Bearings are based on Solar observations

References

Vide: Bk. 956 Fol. 207
PLAN F. J. 24

SCALE 1:750

Distances are in METRES

PLAN of a Parcel of land coloured pink in the Ward of St. Anns
Containing eighteen hundred and sixty one point eight square metres
Redefined by me, with due authority, in June 2000 for Zamir Muzaffar
In accordance with Rule 25 (1) of the Land Surveyors' Regulations 1998,

I certify that this Plan is correct.

NOTED ON PLAN M.G.68.

2000/08/15
S.H.B.

ENTERING CHECKED
2000-8-15

Bhagirathi Maharaj
June 30th

Trinidad and Tobago Land Surveyor 2000 .

2000-7-18