

1236

120

L. and S.—53

A N^o 4202

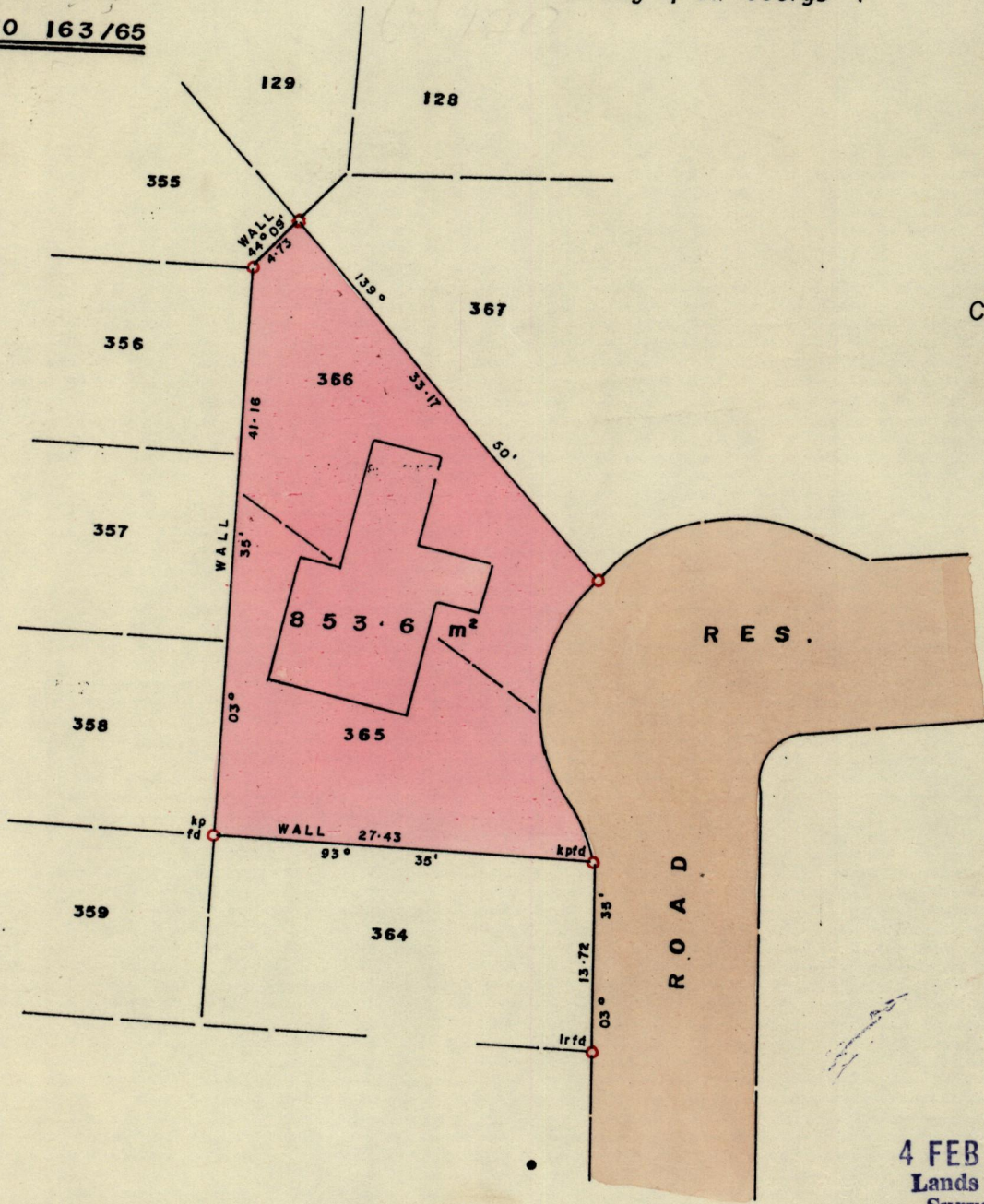
Cadastral Sheet 12C
4/d

Ward of Diego Martin

County of St. George

DIAMONDVALE

See S/O 163/65



GIN Cassini

RES.

ROAD

4 FEB 2002
Lands and
Surveys
Division

Parcel is known as # 39 Carnelian Gardens

SCALE 1:500

add

Note: To obtain compass bearing subtract minutes Distances are in metres .
PLAN of a Parcel of land coloured pink in the Ward of Diego Martin .
Containing eight hundred and fifty three point six square metres

Redefined by me, with due authority, in October . 1998 for Cyril Paul .
Showing location of his dwelling house on the parcel.

Entered On 12C
419
Dec. 2002. LKR.

Land Surveyor, Trinidad.....
and Tobago

