

1236

Cadastral Sheet 53F G.3. A. 4/a

117

R.P.O. C.T. Vol. 3847

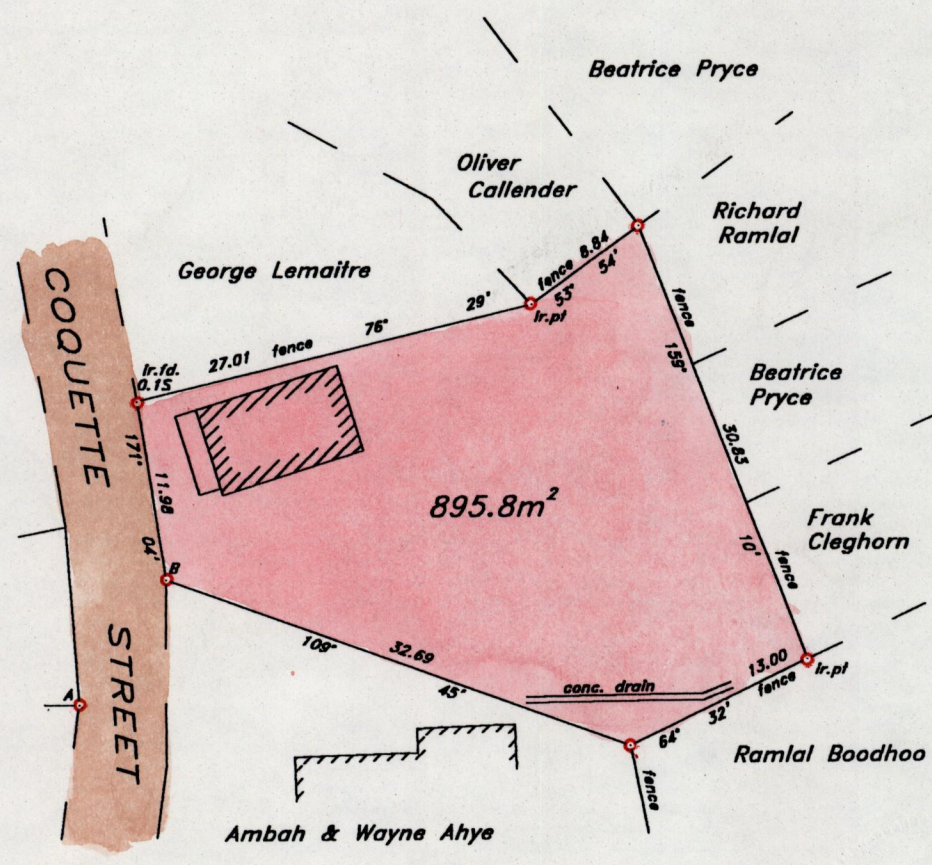
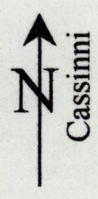
Fol. 119

270

Ward of Naparima

County of Victoria

VIDE Book 1220:93
Book 1220:104



A-B 35° 20' 10.05

○ Denotes Iron found unless otherwise stated
Bearings are based on Solar Obs.

Scale 1 / 500
Distances are in metres

PLAN of a parcel of Land coloured pink in the Ward of Naparima

Containing **Eight hundred and ninety-five point eight sq. metres**

Re-defined by me with due authority in March 2001 at the request of **MICHAEL CALLENDER**

In accordance with Rule 25(1) of the Land Surveyor's Regulations 1998, I certify

that this plan is correct.

Checked by
Entered on

Colvin Blaize
Trinidad & Tobago, Land Surveyor
2001.04.20

2nd April, 2001

ENTERED ON 13 B 4C

JR October 2002