

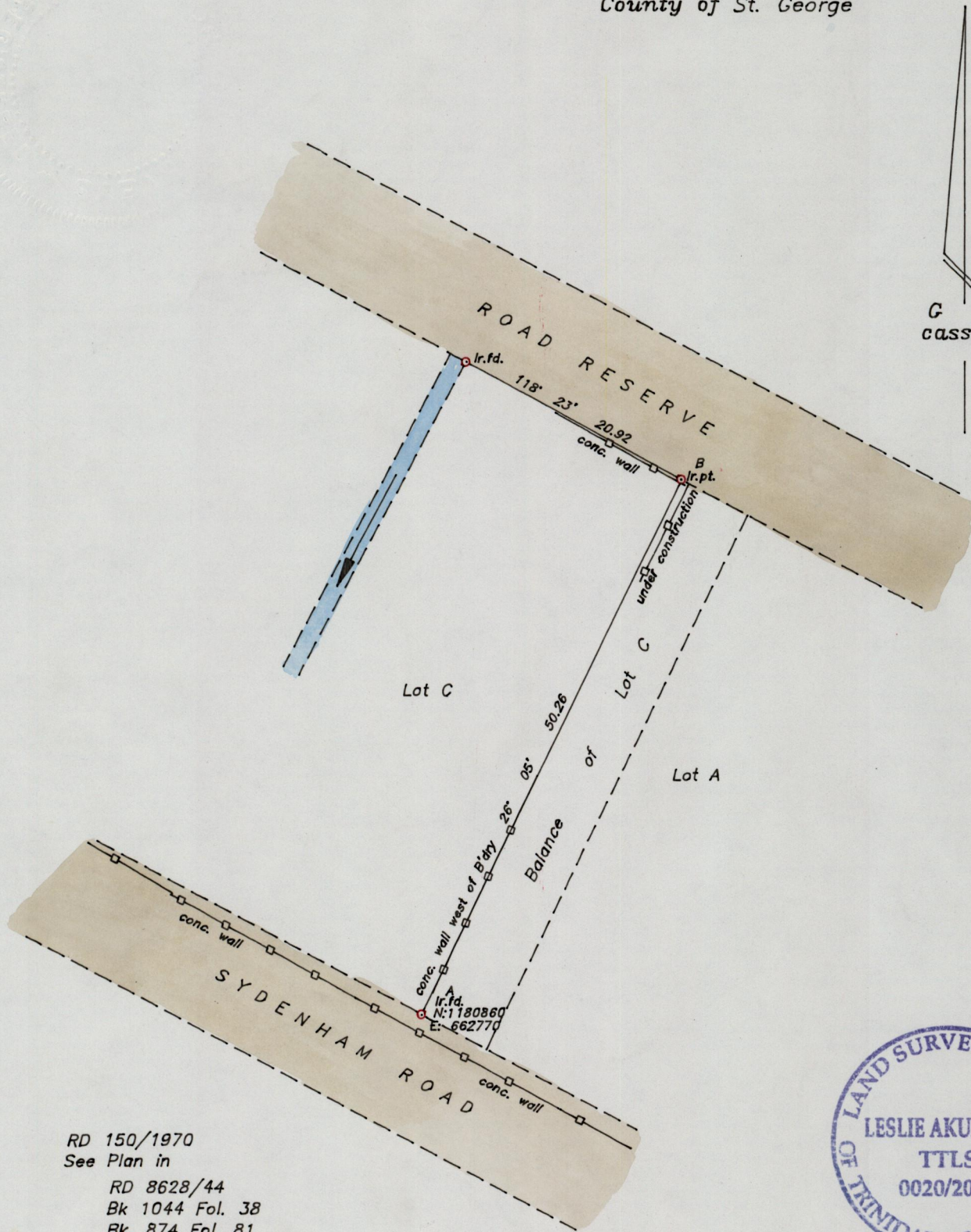
1236

114

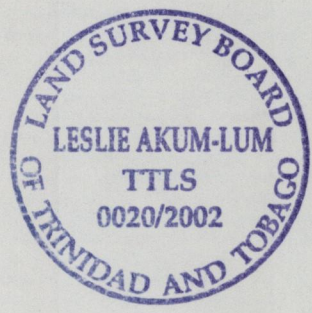
1236

114

Cadastral Sheet A.20.B. $\frac{13D}{2/d}$
Ward of St. Anns
County of St. George



RD 150/1970
See Plan in
RD 8628/44
Bk 1044 Fol. 38
Bk. 874 Fol. 81



SCALE 1/500

Note: To obtain compass bearings subtract 2 minutes.

Distances are in metres

PLAN of the redefinition of a Boundary line A-B in the Ward of St. Anns
Surveyed by me, with due authority, in July 2002 at the request of
Lisa Fung

In accordance with regulation 25 (1) of the Land Surveyors' Regulation 1998,
I certify that this plan is correct.

Checked by JR. Nov. 2002

Justin L-Fung

Entered. 130.24

Trinidad & Tobago Land Surveyor. *21 July 2002*

Volume 5/Justin/L-Fung

