

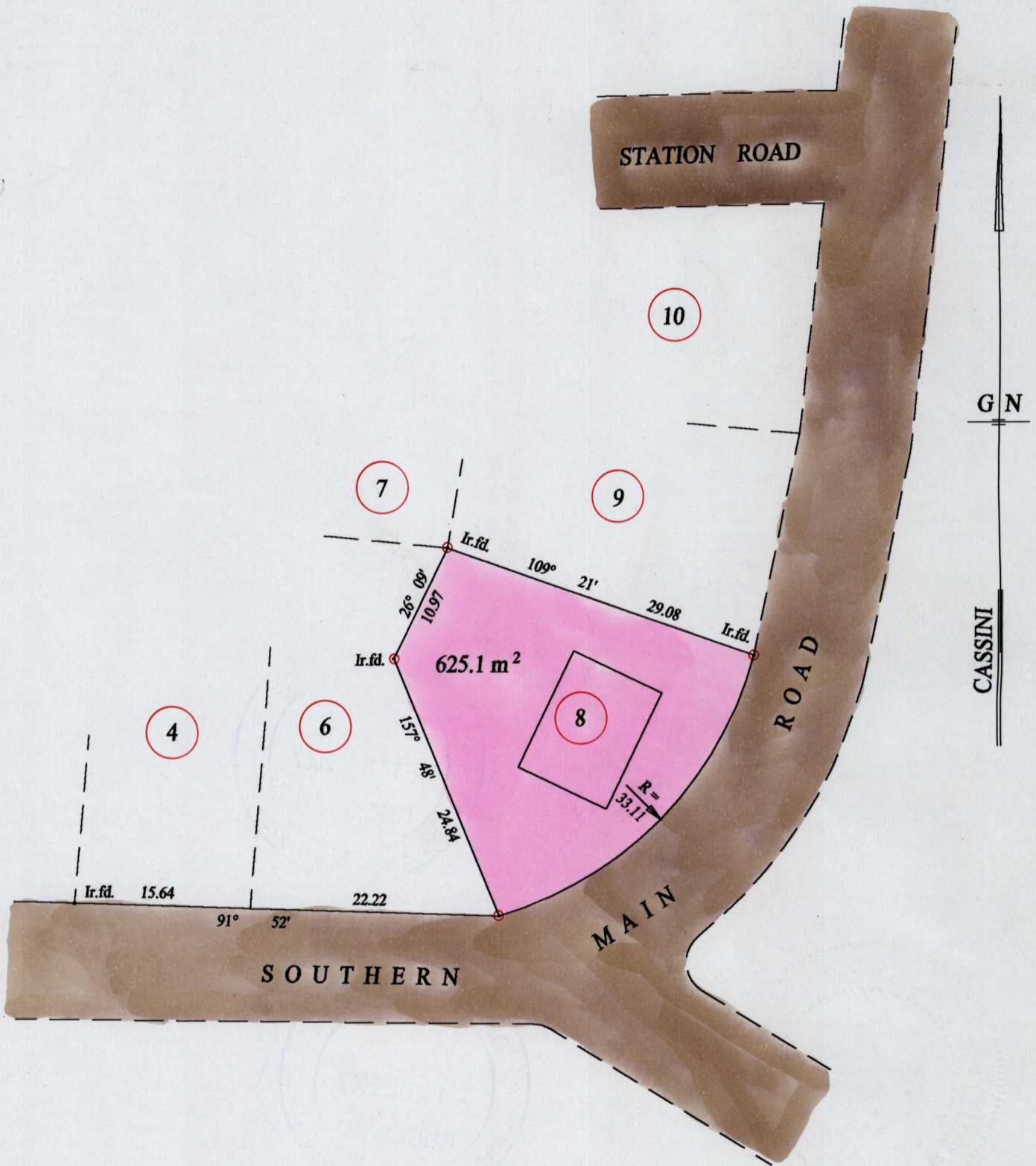
Ward of Siparia

County of St. Patrick

Cadastral Sheet (G.7.I) 63.A.

2/c & 4/a

ST. MARY'S VILLAGE



See Plan KC 54

○ Denotes Iron put except stated otherwise.

SCALE : 1:500

Note: Bearings are cassini grid based on solar observations Distances are in metres

PLAN of a Parcel of land coloured pink in the Ward of Siparia
 Containing six hundred and twenty five point one square metres
 Re-defined by me, with due authority, in May 2002 for Ver John
 In accordance with regulation 25 (1) of the Land Surveyors' Regulation 1998,
 I certify that this plan is correct.



14.01.2003
 Computer 63A
 4a

Trinidad & Tobago Land Surveyor 06 2002

118

118

DRAWING OFFICE
- 1 JUL 2002
RECEIVED
LANDS & SURVEY DIVISION

DRAWING OFFICE
- 1 JUL 2002
RECEIVED
LANDS & SURVEY DIVISION

LAND SURVEY DIVISION
MAYBE RABBITIA
1112
DOTTING
DOTTING MID JONHO