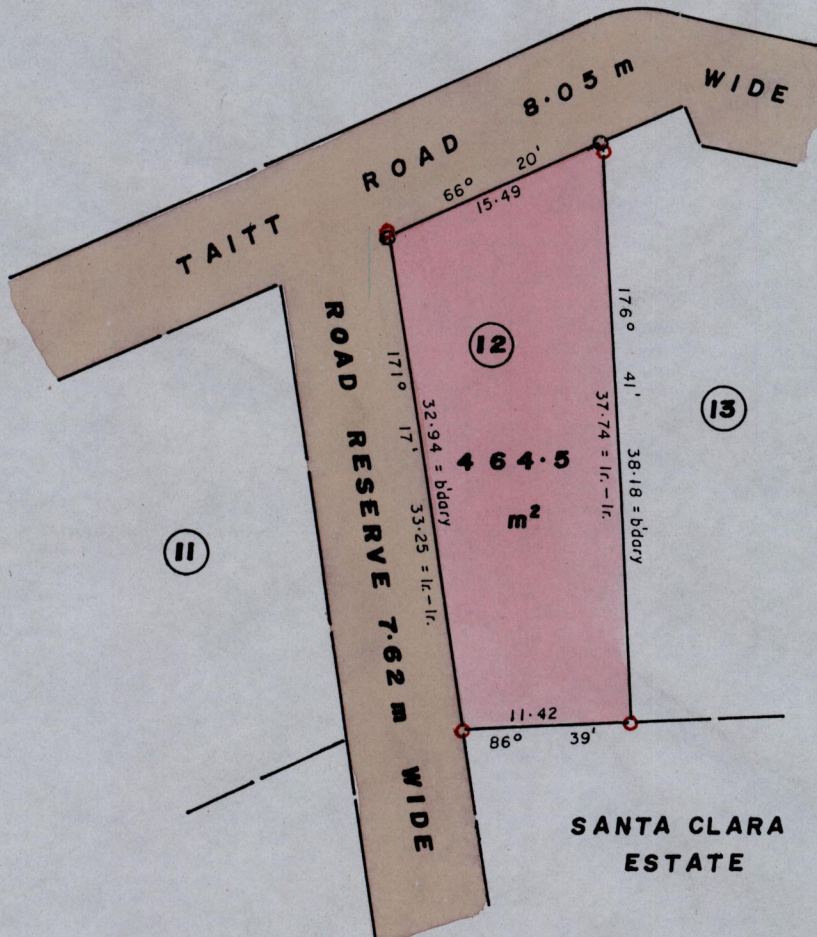


1236

Ward of **Montserrat**
County of **Caroni**
Cadastral Sheet **43C**
2/d

110

SANTA CLARA ESTATE



G N
Cassini



○ Denotes Iron put unless otherwise stated
Bearings are Cassini Grid based on Solar Obs.
SCALE 1:500

Note: To Obtain compass bearings add/subtract minutes Distances are in METRES

PLAN of a Parcel of land coloured PINK in the Ward of Montserrat .
Containing four hundred and sixty four point five square metres .
Redefined by me, with due authority, in Dec. , 2001

In accordance with Rule 25 (1), of the Land Surveyors Regulations 1998.
I certify that this plan is correct.

DE 03-01-14

[Handwritten Signature]

Trinidad and Tobago Land Surveyor.....2001.

