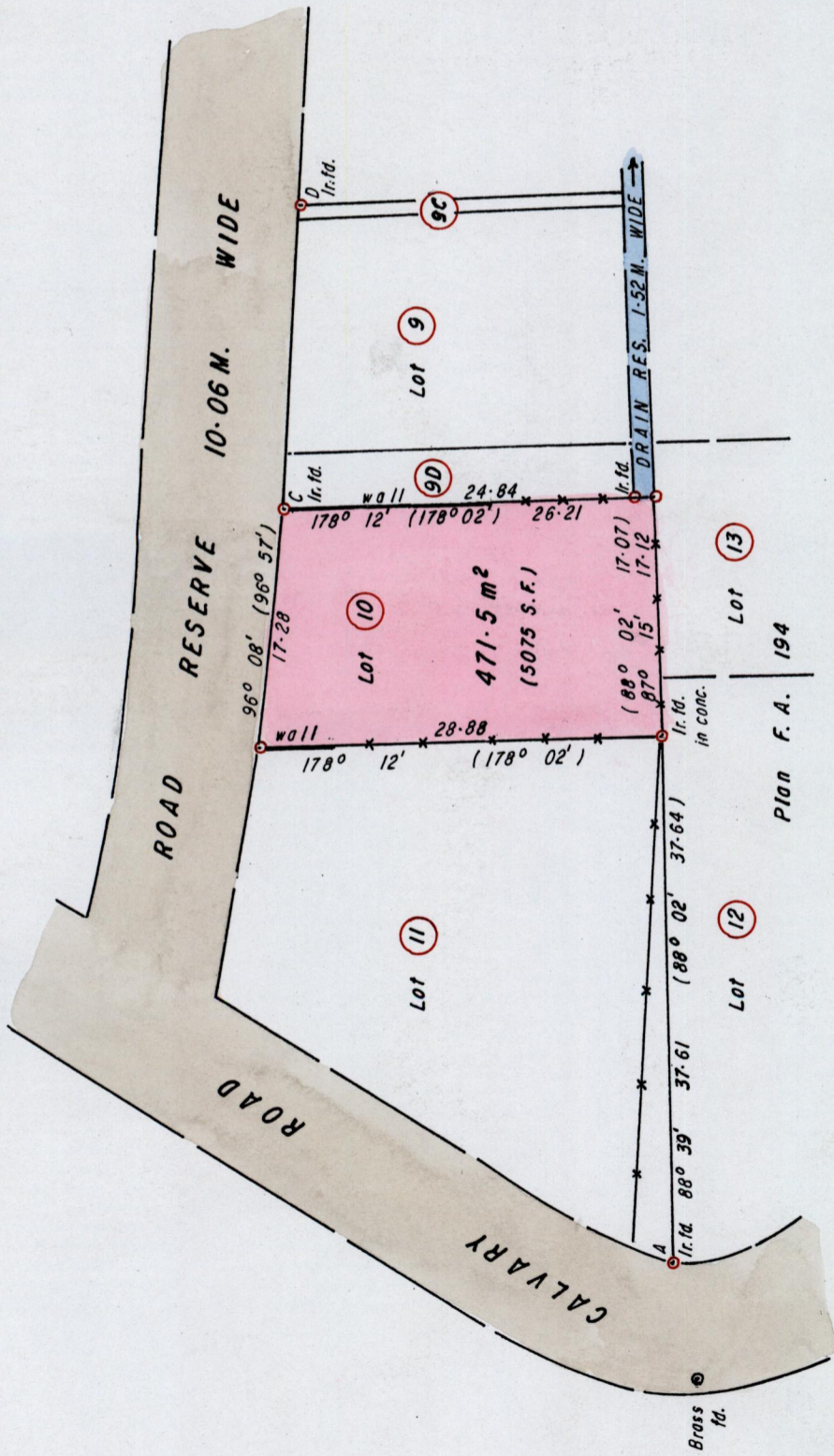


Borough of Arima
County of St. George
Cadastral Sheet B.19.P., 24C
I/b

Yide: Plan J.A. 39
C.T. Vol.2850 Fol 47
C.T. Vol 1537 Fol 497

REDEFINITION PLAN



Brass fd. - A	79° 46'	8.25
C - D	93° 00'	21.44

SCALE 1/500

Distances are in METRES.

Bearings are Cassini Grid based on Solar Obs.

Note: To Obtain compass bearings add/subtract minutes.

PLAN of a Parcel of land coloured Pink in the Borough of Arima
Containing four hundred and seventy one point five square metres

Redefined by me, with due authority, in October 2002 for Robin Antoine

In accordance with Regulation 25 (1), of the Land Surveyors' Regulations 1998, I certify that this plan is correct.

ENTERED ON 24C 116/3 50'E
Trinidad and Tobago Land Surveyor 17th October 2002
Camille Fortune-Rollack



--- Denotes Wire Fence

o Denotes Iron put unless otherwise stated

1536

107

DRAWING OFFICE
LANDS & SURVEY DIVISION
RECEIVED
21 OCT 2002

DRAWING OFFICE
LANDS & SURVEY DIVISION
RECEIVED
21 OCT 2002

DRAWING OFFICE
LANDS & SURVEY DIVISION
RECEIVED
21 OCT 2002

7551

28