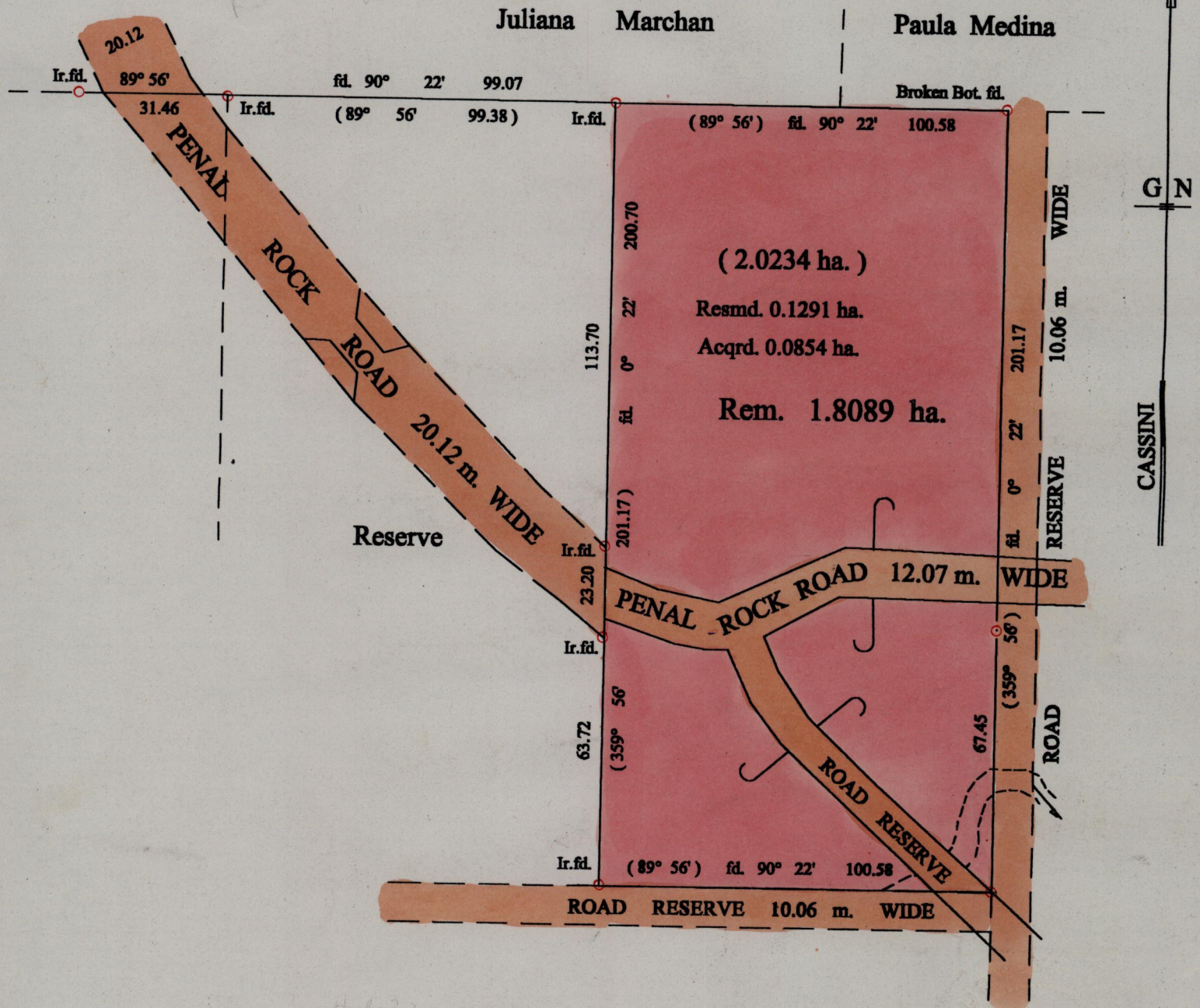


1236

Ward of Moruga
County of Victoria
Cadastral Sheet (G.20.F) 74.B.
2/d

1007

91 C.T. Vol. 1338 fol. 113



See Bk 315:138
" " 336:46

SCALE : 1:1500

○ Denotes Iron put except stated otherwise.

Note: Bearings are cassini grid based on solar observations

Distances are in metres

PLAN of a Parcel of land coloured pink in the Ward of Moruga

Containing one point eight zero eight nine hectares

Re-defined by me, with due authority, in December 1999 for Mr. R. Sookdeo.

In accordance with Rule 25 (1) of the Land Surveyors' Regulation 1998,

I certify that this plan is correct.

NOTED IN BK 1236:138
2000/02/22
S.H.B.
ENTERING CHECKED BY
C. 2000 2. 22

Harvey S. Ramrekha

Trinidad & Tobago Land Surveyors 18. 12. 19 99

00.01.11

