

281
10.00

1236

L. and S.—53

210

138803

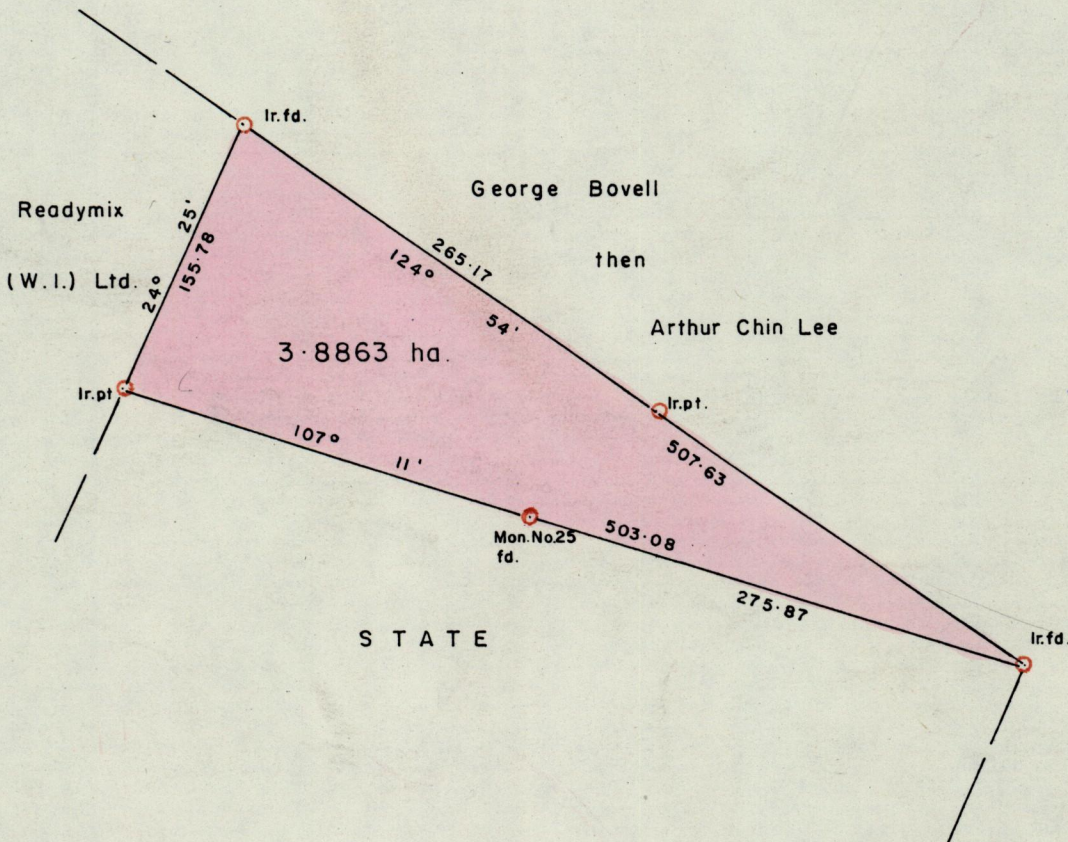
Cadastral Sheet C.17.0. 25 C
2 / b

Ward of Manzanilla

County of St. Andrew

R. P.O. Vol. 36 Fol. 355
C.T. Vol. 1252 Fol. 411

G. N.
Cassini



Original Survey Bk. 903:156

SCALE : 1 / 4000

add

Note : To obtain compass bearing ~~subtract~~ 19 minutes Distances are in metres

PLAN of a Parcel of land coloured pink in the Ward of Manzanilla

Containing three point eight eight six three hectares.

Re-Surveyed by me, with due authority, in May 1991 for Readymix (W.I.) Ltd.

ENT'D ON... 25C 2.7.b... P.S.

98: DL. DS. ...

CHECKED BY N.C. G. G. G. G. Land Surveyor, Trinidad 11/6/1991

G.P., Tr./To.—C1763—50,000—6/86

Recvd 95.01.30

LANDS AND SURVEYS VAULT RECORDS