

1196

L. & S.—54

700

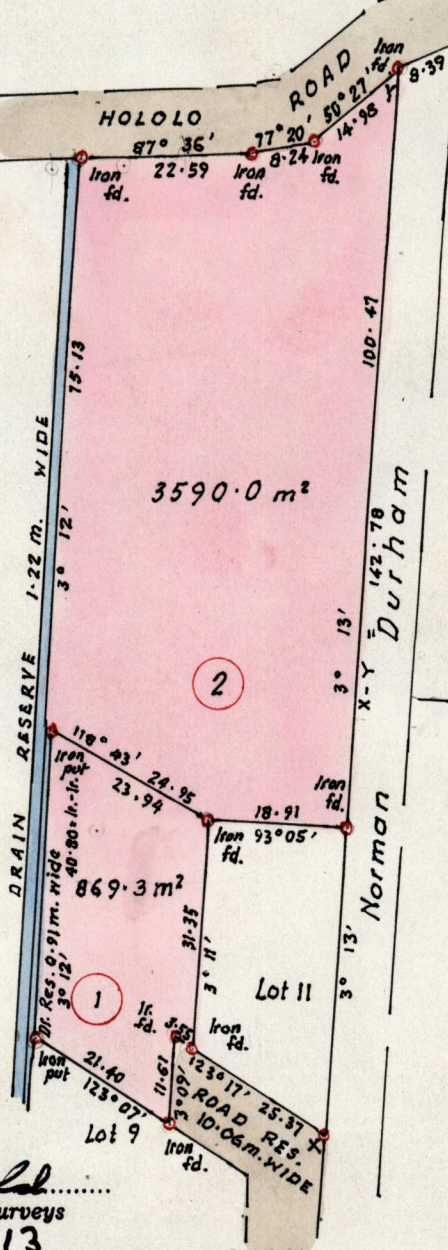
R.P.O. Vol.  
C.T. Vol. 2209

Fol.  
Fol. 513

Ward of St. Ann's  
County of St. George  
Cadastral Sheet A.20.C. (13 E / 17 C)

Amendment to Lots 10, 12 & 13  
Gen. Plan filed in R.P.O. Vol. 2252  
fol. 503

now or  
formerly  
L.R.  
Duprey



Guy, Ltd.

G. N.  
(Cassini)

Nicholas  
Holdings  
Ltd.

Norman  
X-Y Durham

Approved

*[Signature]*  
Director of Surveys  
97 01 13

SCALE: 1/1000

Bearings are based on Solar Observations.

Note: ~~To obtain compass bearings add/subtract~~ minutes

Distances are in metres

PLAN of <sup>2</sup>/<sub>2</sub> Parcels of land coloured pink in the Ward of St. Anns  
Containing 1. eight hundred & sixty-nine point three square metres &  
2. three thousand, five hundred & ninety square metres  
Surveyed by me, with due authority, in January 1996.

I certify that I have complied with rule 76 under section 14(2)(d) of the  
Land Surveyors' Ordinance 1952, and that this plan is correct.

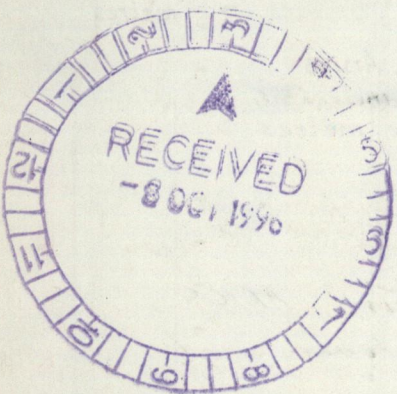
Checked by *[Signature]* 2/1/97

*[Signature]* A. J. Ramon, M.I.C.S.

Entered .....

Land Surveyor, Trinidad 2nd October 1996

Original Survey Plan PA 132



1196-700