

Nº 27360

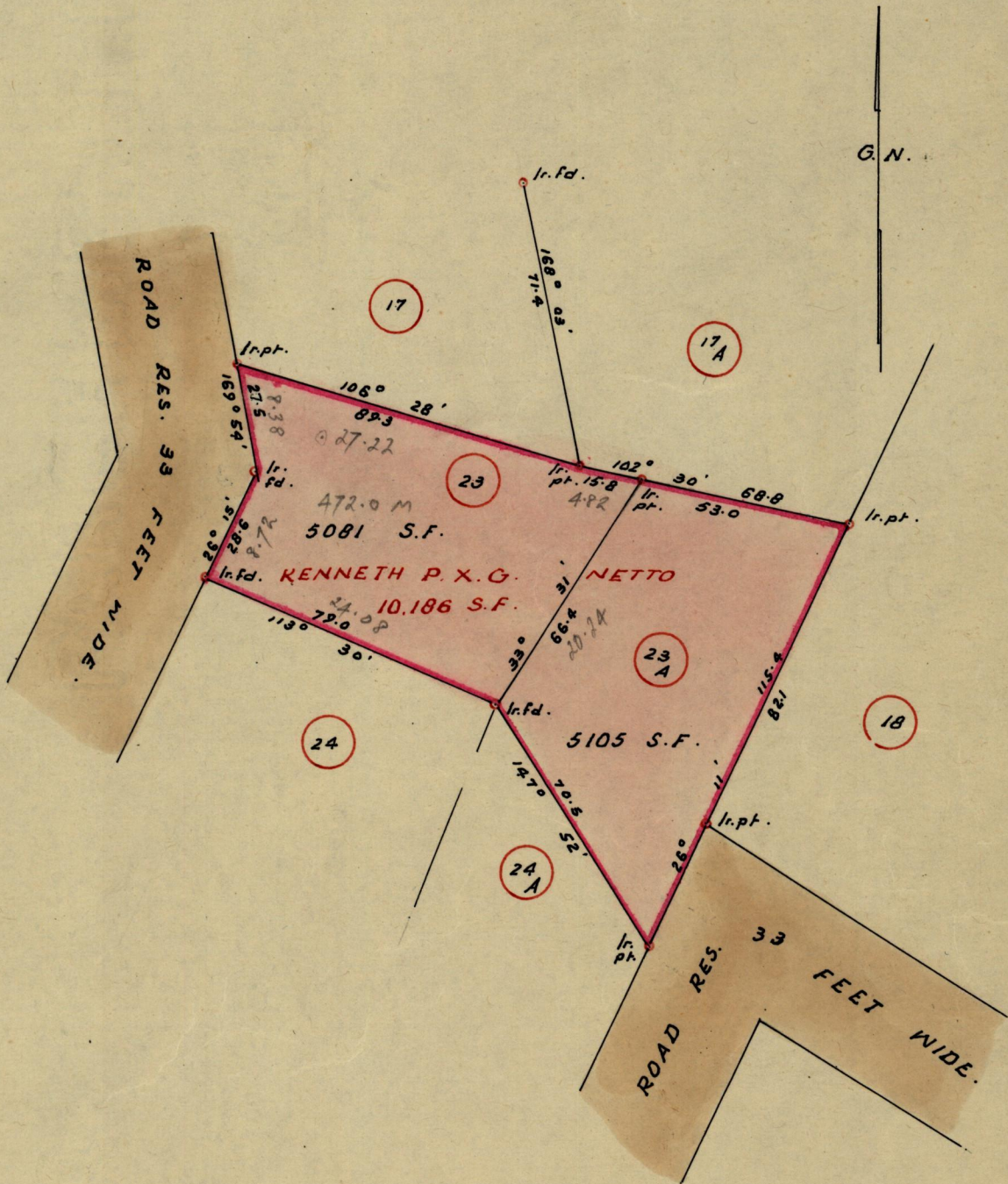
1196

100
169

R.P.O. Vol.
C.T. Vol. 1806

Fol.
Fol. 261

Ward of St. Anns
County of St. George
Cadastral Sheet A.20.B.



Approved

L. J. Farrell

Director of Surveys

13.1.70

SCALE ~ 1:500

Note: To obtain compass bearings ~~add~~/subtract 2 minutes Distances are in feet.

PLAN of a Parcel of land coloured pink in the Ward of St. Anns
Containing together ten thousand one hundred and eighty six square feet.

Surveyed by me, with due authority, in December 1968

I certify that I have complied with rule 76 under Section 14 (2) (d) of the Land Surveyors' Ordinance 1952, and that this plan is correct.

Checked by *L. J. D. 13/1/70*

J. R. Gardiner

Entered

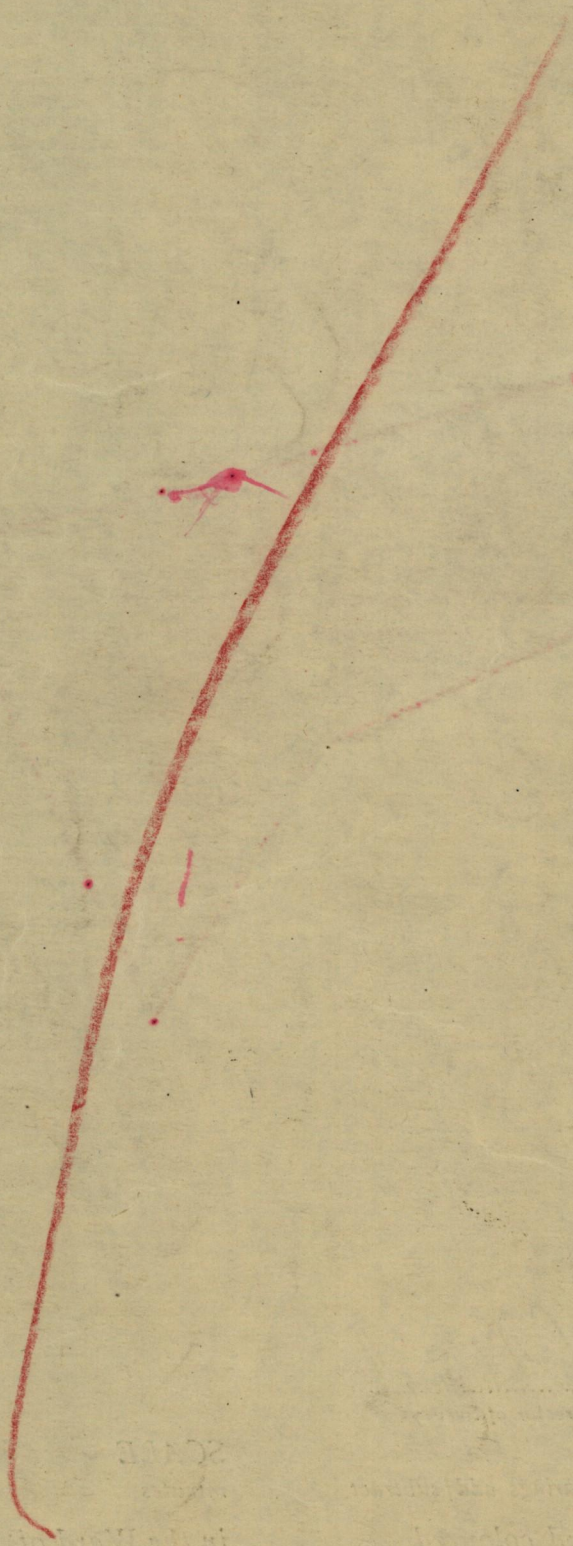
Land Surveyor, Trinidad

15th Dec. 1969

2330

Vol
78

R.P.O. No.
C.O. No.



SCALE

in the hand of
To other copies bearing the same
of a Part of land colored
and the same with the authority
of the land
Survey Ordinance 1853 and the
Land Revenue, British
India