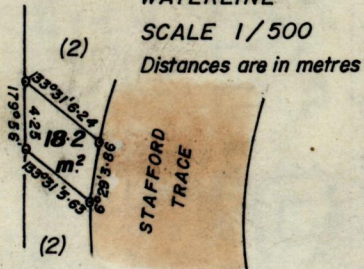


INSET

Edward James



WATERLINE
SCALE 1/500
Distances are in metres

Sta.	Bearings	Distances	Sta.
O	45° 18'	47.76	P
P	190° 58'	71.54	Q
Q	190° 58'	66.63	R
R	147° 15'	26.12	S
S	147° 15'	99.21	T
T	147° 15'	9.88	K
C	264° 22'	125.94	P
J	273° 56'	119.12	T
O	359° 56'	82.72	A

1196

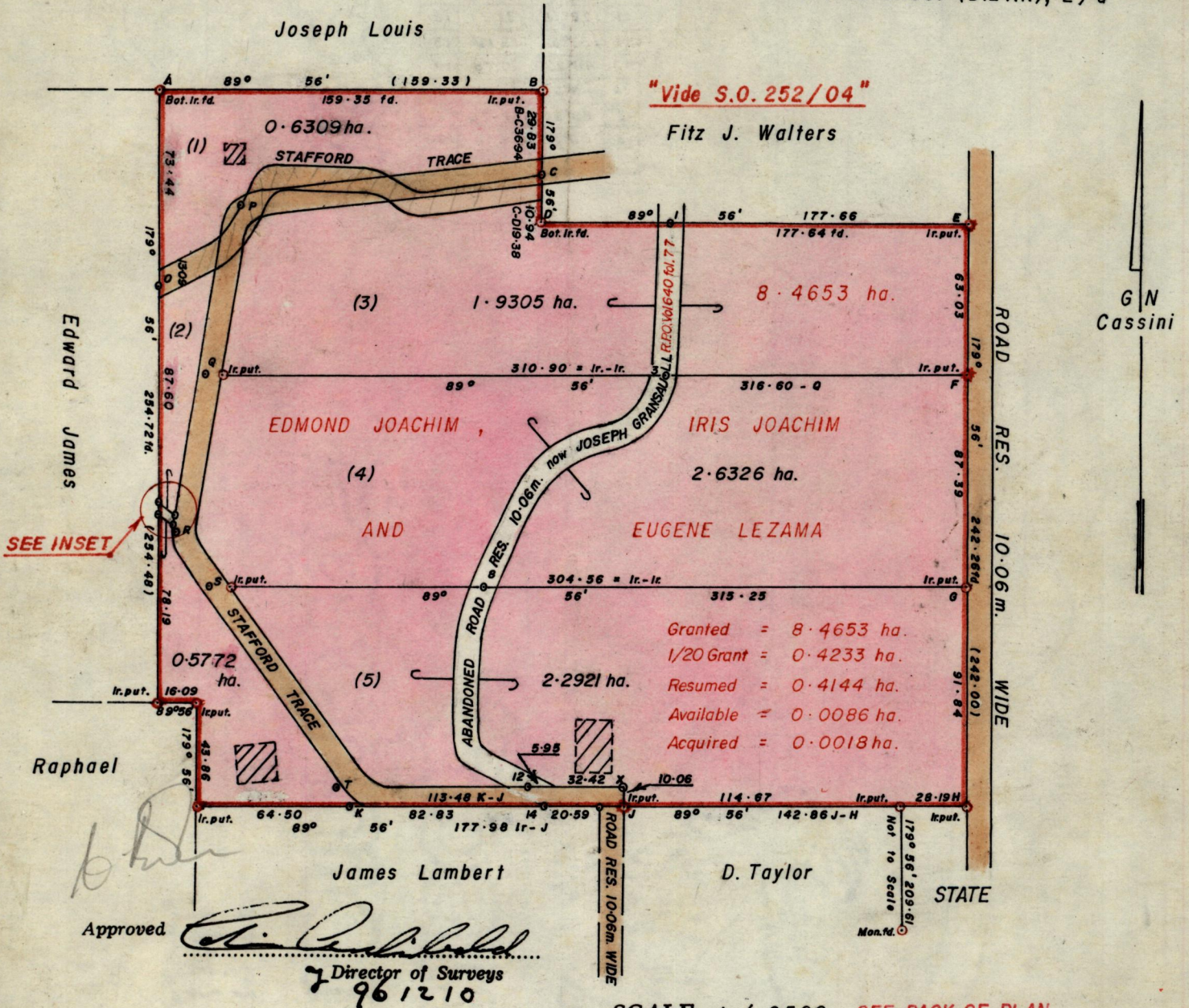
L. & S.—54

687

R.P.O. Vol. 119
C.T. Vol. 2620

Fol. 669
Fol. 401

Ward of Savana Grande.
County of Victoria. 54 B
Cadastral Sheet (D.24.K), 2/d



Approved *[Signature]*
Director of Surveys
961210

SCALE 1 / 2500 SEE BACK OF PLAN

Note: To obtain compass bearings add/subtract 4 minutes Distances are in metres

PLAN of 5 Parcels of land coloured pink in the Ward of Savana Grande.
Containing together eight point zero six three three hectares.
Surveyed by me, with due authority, in May 1988.

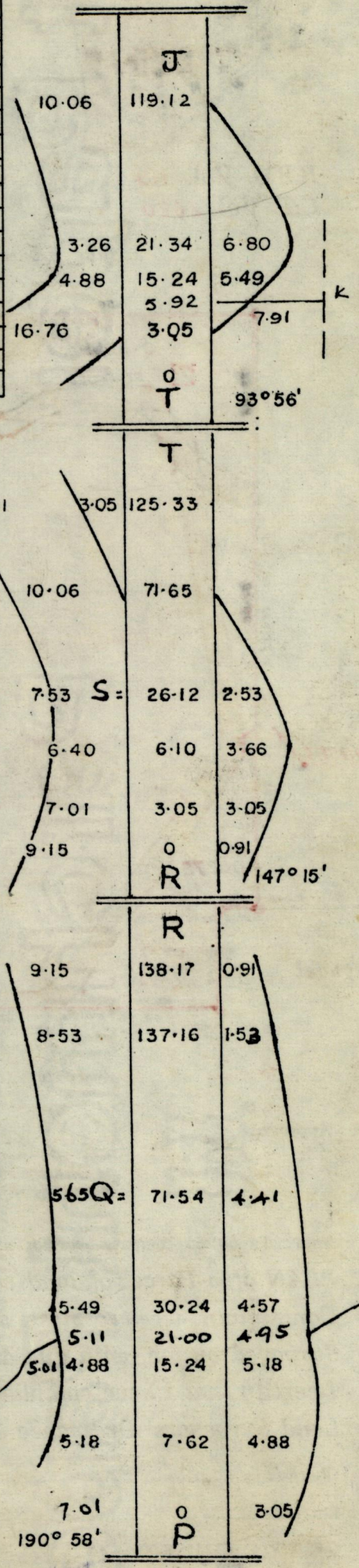
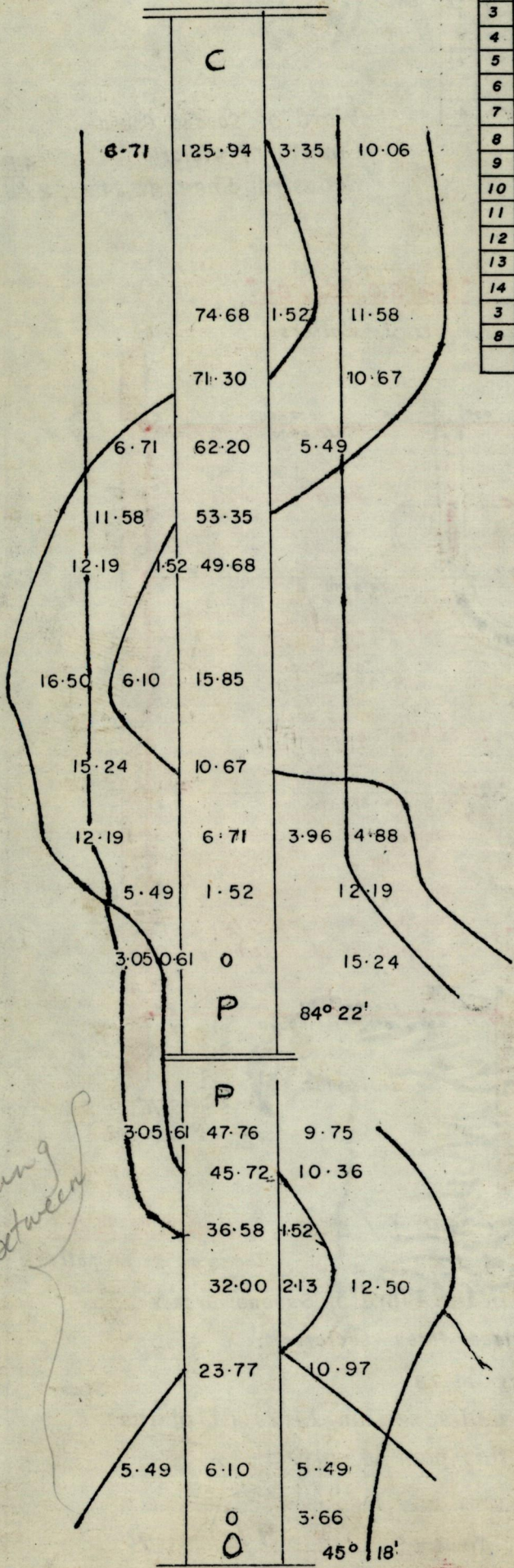
I certify that I have complied with rule 76 under section 14(2)(d) of the Land Surveyors' Ordinance 1952, and that this plan is correct.

Checked by *[Signature]* 9/12/96
Entered
Land Surveyor, Trinidad and Tobago 9/3 1990

References for Road Reserve

Original Survey bk. 266 fol. 75

Sta.	Bearings	Distances	Sta.
D	89°56'	51.38	1
1	185°42'	37.84	2
2	182°41'	25.41	3
3	182°41'	6.40	4
4	217°02'	17.30	5
5	257°48'	28.97	6
6	218°02'	24.76	7
7	201°34'	44.76	8
8	201°34'	12.81	9
9	177°06'	30.40	10
10	186°14'	22.75	11
11	122°16'	31.51	12
12	122°16'	2.11	13
13	146°29'	10.78	14
3	89°56'	131.28	H
8	89°56'	202.13	G



Something wrong between O-P