

BK 1176
1193

L. & S.—54

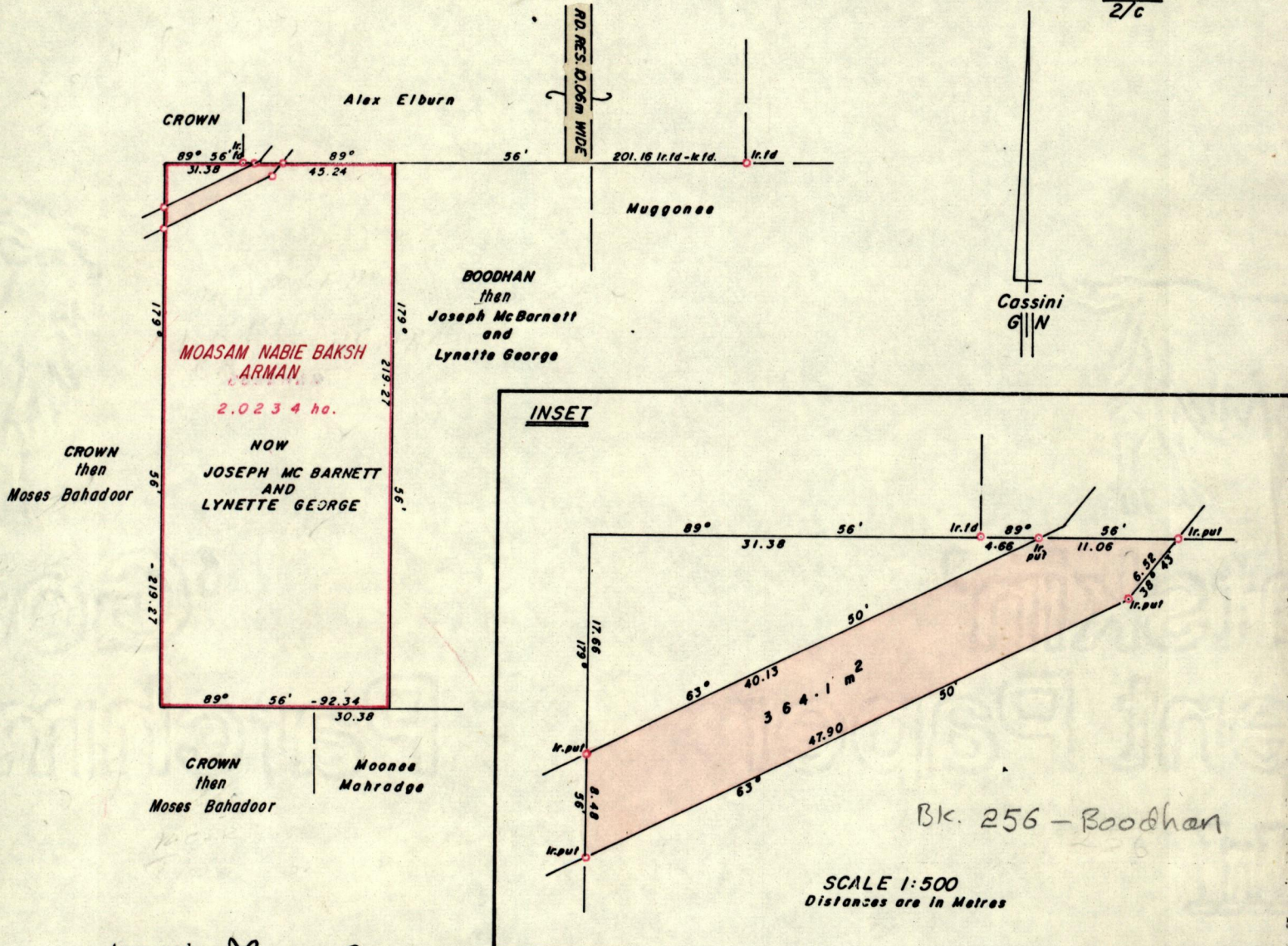
384

No 15749

R.P.O. Vol. 99
C.T. Vol. 1772

Fol. 267
Fol. 359

Ward of Savana Grande
County of Victoria
Cadastral Sheet D.24.J. $\frac{54B}{2/C}$



Approved Louis Charles
Director of Surveys
91.07.29

SCALE 1:2500

Note: To obtain compass bearings add/subtract 4 minutes Distances are in Metres

PLAN of a Parcel of land coloured pink in the Ward of Savana Grande

Containing three hundred and sixty four point one square metres

Surveyed by me, with due authority, in January 1988

I certify that I have complied with rule 76 under section 14(2)(d) of the Land Surveyors' Ordinance 1952, and that this plan is correct.

Checked by H. Somanath 17/7/91

Entered Land Surveyor, Trinidad & Tobago 12th Mar 1988

G.P., Tr./To.—943—20,000—/83

9/07/29

BK 256 — Boedhaan

23

