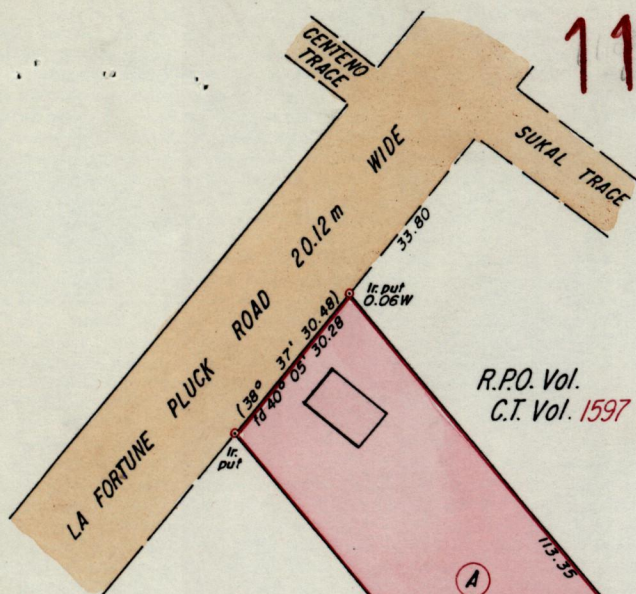


1196

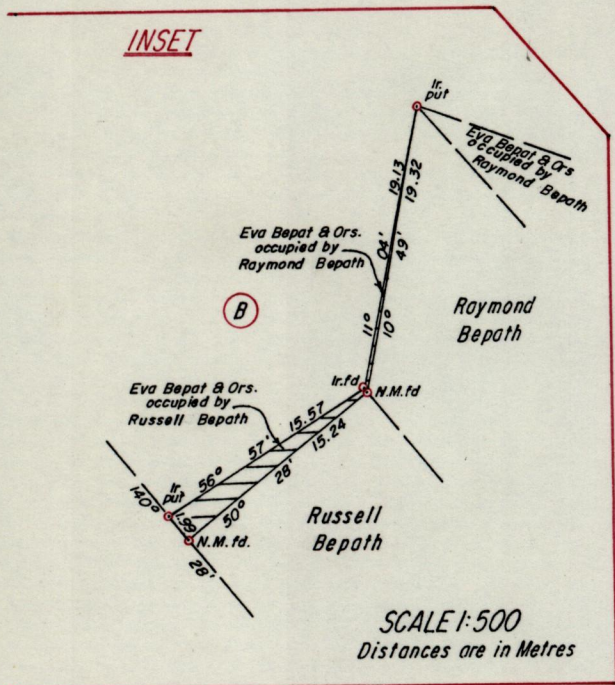
631

L. & S.—54



Ward of Siparia
County of St. Patrick
Cadastral Sheet G.12.C. $\frac{63E}{17a}$
See Bk. 1128 Fol. 220

R.P.O. Vol. Fol.
C.T. Vol. 1597 Fol. 353



JOHN BEPAT 0.8094 ha.
EVA BEPAT, ORS. 0.3376 ha.
HELEN MOHAMMED BEPAT 0.3382 ha.

Cassini
G/W

3

Approved *Law Charles*
AP Director of Surveys
93.12.03

Bearings are based on solar observations
Note: To obtain compass bearings add/subtract

SCALE 1:1250
minutes

Distances are in Metres

PLAN of 2 Parcelsof land coloured pink in the Ward of Siparia
Containing together, zero point six seven five eight hectares
Surveyed by me, with due authority, in June 20th 1992

I certify that I have complied with rule 76 under section 14(2)(d) of the
Land Surveyors' Ordinance 1952, and that this plan is correct.

Checked by *Abdul* 12 Nov 93

Ganeshdath Ramcharitar

Entered

Land Surveyor, Trinidad & Tobago

14/1/93
ANESH DATH RAMCHARITAR
LAND SURVEYOR

180

Orig. Survey Bk. 960 fol. 222.
See Bk. 960 fol. 224.

1124 fol. 176

960 fol. 222