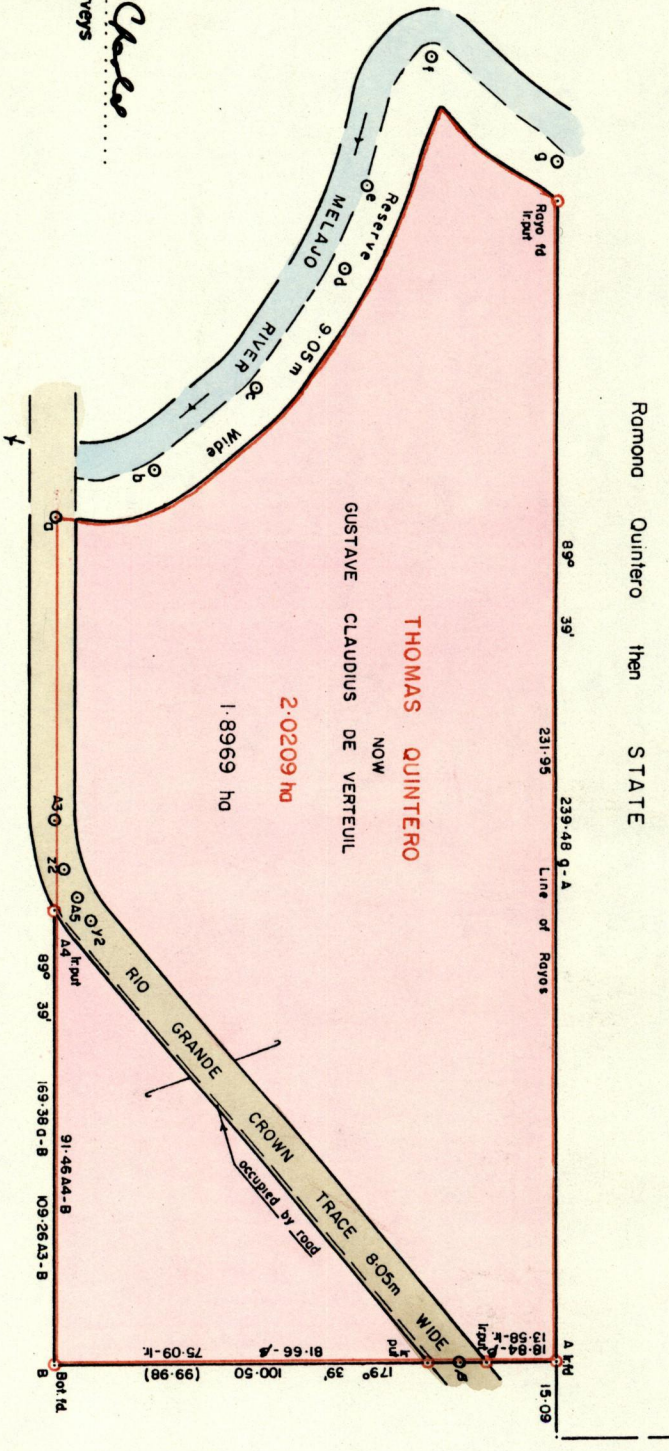


13

R.P.O. Vol. 217 Fol. 603
C.T. Vol. Fol.

Ward of Matura
County of St. Andrew
Cadastral Sheet C.23.B. 26A
2/D 8 4/b



Approved
James Clarke
Ap Director of Surveys
91.07.29

To obtain compass bearings add 21 minutes

PLAN of a Parcel of land coloured pink in the Ward of Matura

Containing one point eight nine six nine hectares

Surveyed by me, with due authority, in January 1991.

I certify that I have complied with rule 76 under Section 14 (2) (d) of the Land Surveyors' Ordinance 1952, and that this plan is correct.

Checked by *Spencer* 17/7/91

Entered *Valer & Helen Long*
Land Surveyor, Trinidad 8th March 1991.

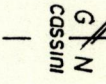
SCALE 1/1500

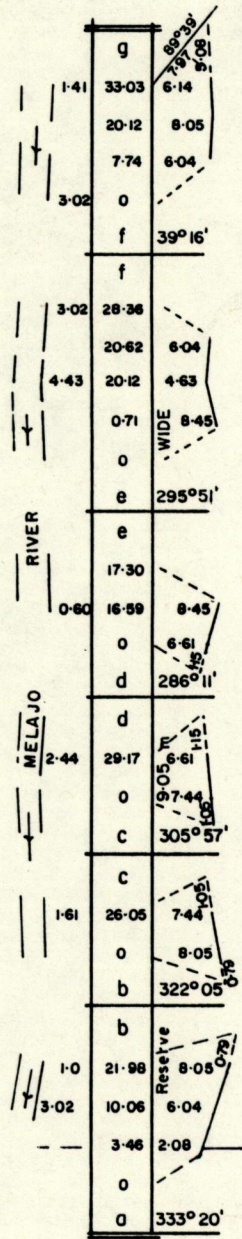
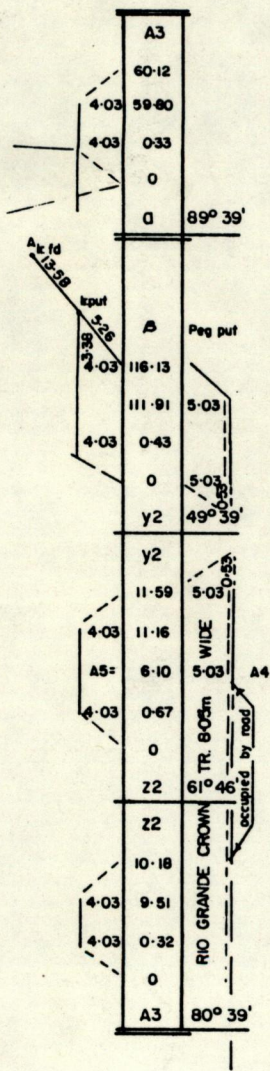
Distances are in metres

See Survey Order No 519/08
B
Field Bk. 12 Folios 64 8 65

Rio Grande Crown Trace Resumed O102 ha
Acquired O-0304 ha
See Plan K C 16

P.T.O. for field notes





Bk 133 - Thomas Quintero?