

R.P.O. Vol. 4 Fol. 115

C. of T. Vol. 3316 Fol. 437

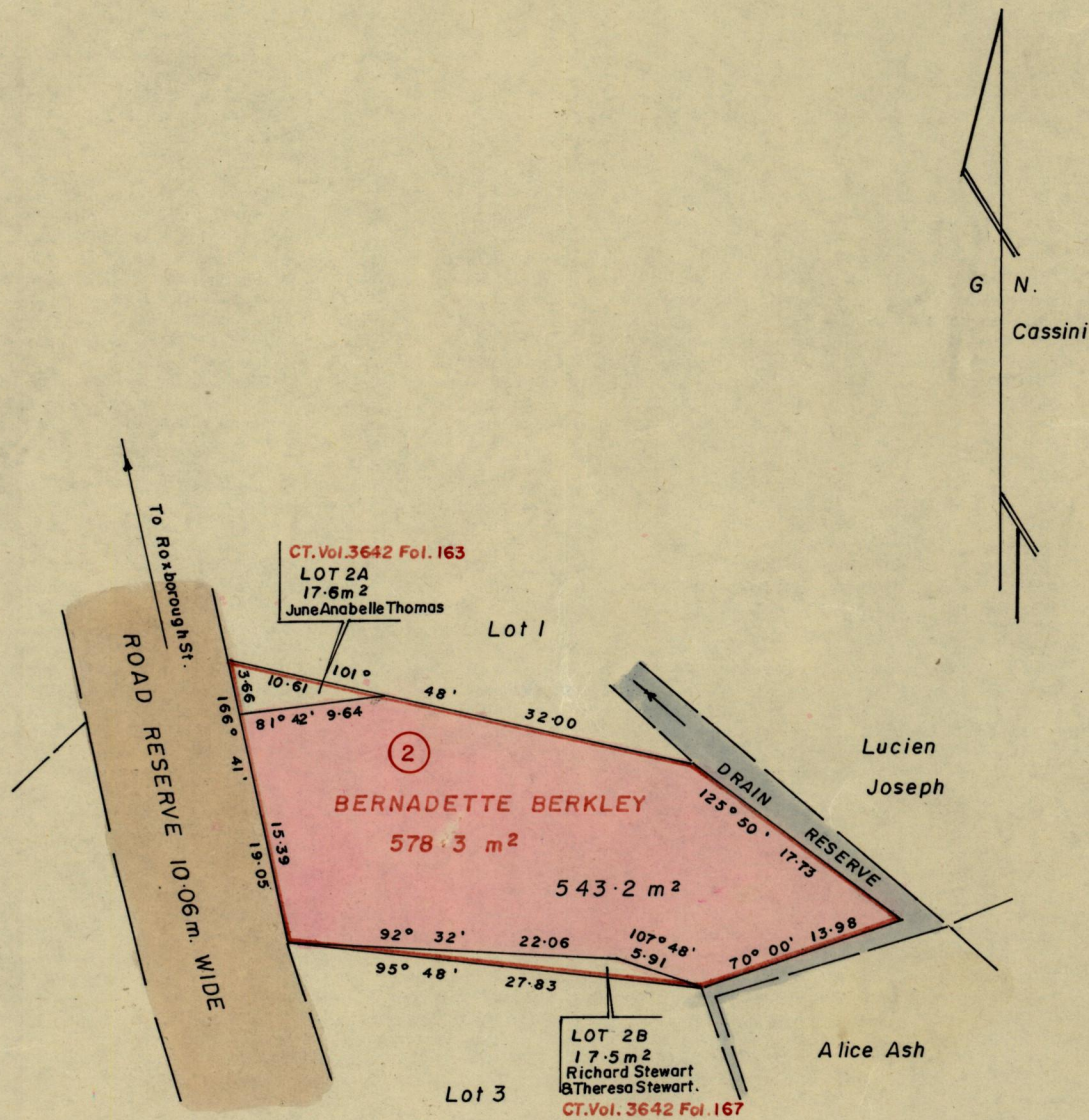
1196

Cadastral Sheet A.14.G. 12C/4/b

Ward of Diego Martin

County of St. George

6



Approved

C. J. ...

Director of Surveys
9803 20

c.f. L & S. PLAN E.H. 87

SCALE : 1 / 500

Note: To obtain compass bearings ~~add~~ subtract 4 minutes

Distances are in metres

This is a true copy of a diagram of five hundred and seventy eight point three three square metres originally transferred ~~granted~~ to Bernadette Berkley, shewing a portion coloured pink and containing five hundred and forty three point two square metres being the remainder after two (2) previous transfers of another portions of the land.

the dividing lines having been run in conformity with Rule 76 under Sec. 7 (a) of Cap. 27, No. 2 and duly certified by the Director of Surveys.

Checked by *M. ...* 12 Mar 98
Entered on

Richard ...
Land Surveyor, Trinidad, 5th August 1997

Original See Plan EH87

