

#21  
 1196 93-07-12  
 H. Suman Singh

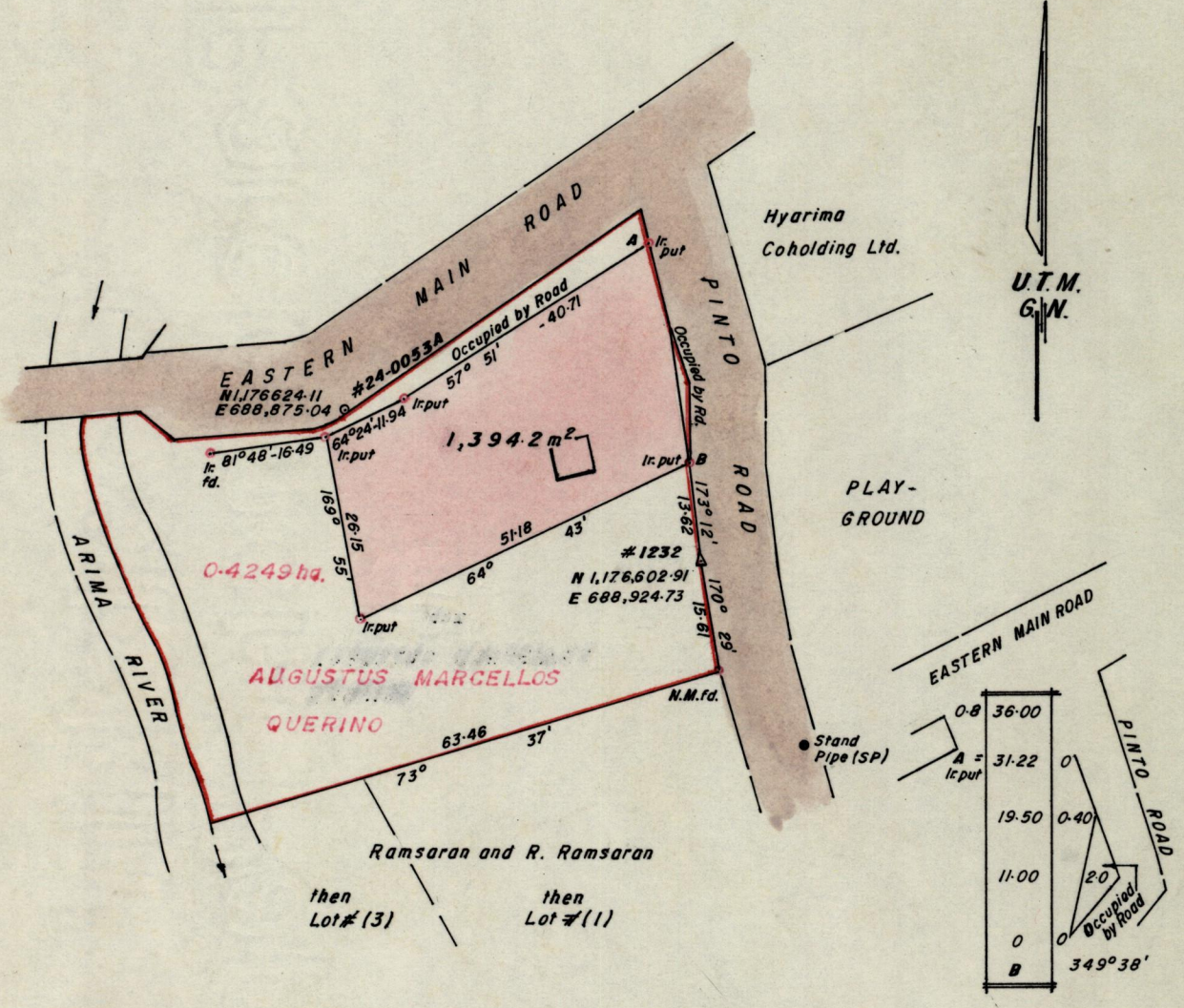
L. & S.-54 591

No 25564

R.P.O. Vol.  
 C.T. Vol. 2990

Fol.  
 Fol. 279

Ward of Arima  
 County of St. George  
 Cadastral Sheet (B.20.M.) 24C  
 2/c



25/10/93

Approved  
*Frank Cole*  
 Director of Surveys  
 93.10.28

Δ 24-0053A 36° 19' = 4.70  
 Δ 1232 - SP 150° 45' = 29.27

Bearings are based on Traverse Sta. 24-0053A and Trig. 1232  
 Note: To obtain compass bearings add/~~subtract~~ //

SCALE 1:1000  
 minutes

Distances are in metres

PLAN of a Parcel of land coloured pink in the Ward of Arima  
 Containing one thousand three hundred and ninety four point two square metres  
 Surveyed by me, with due authority, in October 1992

I certify that I have complied with rule 76 under section 14(2)(d) of the  
 Land Surveyors' Ordinance 1952, and that this plan is correct.

Checked by *Abeluf* 14 Oct 93

*Harp Suman Singh*  
 Land Surveyor, Trinidad and Tobago  
 8th July 1993

Entered .....  
 G.P., Tr./To.-943-20,000- /83

a.H.  
 93-07-13

Mem of Jan 2849 / 76 or 15A

C.T. 2494 / 365