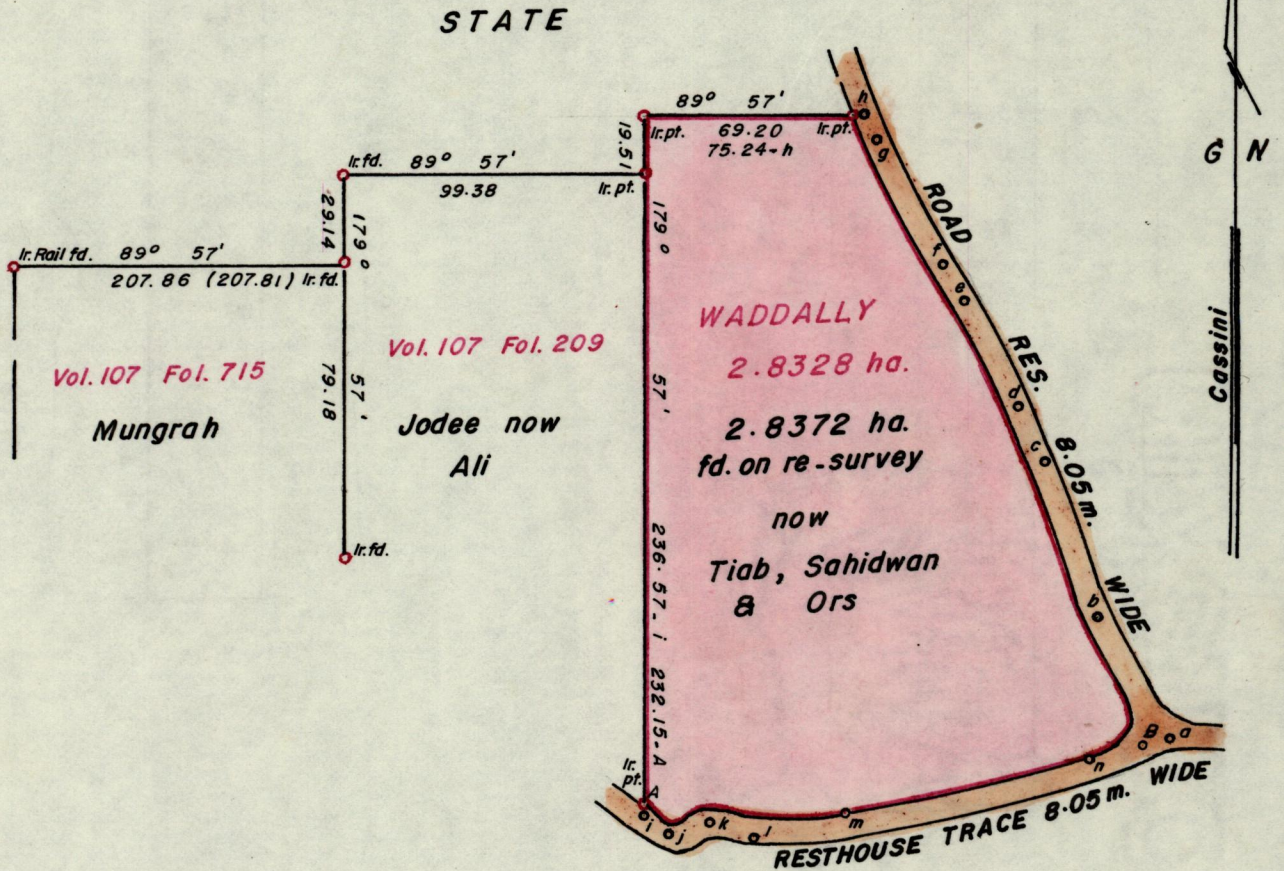


No 24738

R.P.O. Vol. 107
C.T. Vol.

Fol. 253
Fol.

Ward of Savana Grande
County of Victoria
Cadastral Sheet G.10.M. $\frac{64B}{4/a}$



Approved
Paul Charles
 Director of Surveys
 93.07.23

Bearings based on Solar obs. SCALE 1: 2500
 Note: To obtain compass bearings add/subtract minutes Distances are in metres

PLAN of a Parcel of land coloured pink in the Ward of Savana Grande
 Containing two point eight three seven two hectares
 Redefined
 Surveyed by me, with due authority, in 2nd September 1991

I certify that I have complied with rule 76 under section 14(2)(d) of the
 Land Surveyors' Ordinance 1952, and that this plan is correct.

Checked by *[Signature]* 2/1/93
[Signature] Harvey S. Ramrekha
 Entered Land Surveyor, Trinidad 1-05-1992

Original Survey in Rk. 341 Feb. 173

