

1138

L. & S.—54

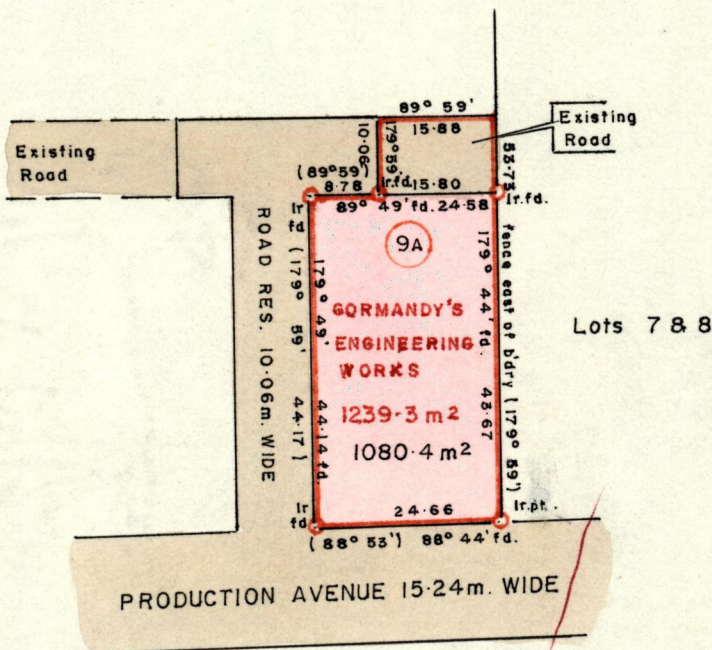
46

No 17274

R.P.O. Vol. 1666 Fol. 97
C.T. Vol. 2529 Fol. 517

City
~~Ward~~ of Port of Spain
County of St. George
Cadastral Sheet A.20.0. $\frac{23 B}{1/a}$

G. N.
Cassini



Approved

James Charles

Director of Surveys
91.07.01

SCALE : 1/1000

Note: To obtain compass bearings ~~add~~ subtract | minutes City Distances are in metres

PLAN of a Parcel of land coloured pink in the ~~Ward~~ City of Port of Spain
Containing one thousand and eighty point four square metres

Surveyed by me, with due authority, in June 1991

I certify that I have complied with rule 76 under section 14(2)(d) of the Land Surveyors' Ordinance 1952, and that this plan is correct.

Checked by *[Signature]* *Arnold A. E. Ramon* *[Signature]*

Entered Land Surveyor, Trinidad *24th June 1991*

91 07 01

Original
Previous Survey - BK 999 fol. 50

1196/116