

1196

L. & S.—54

442

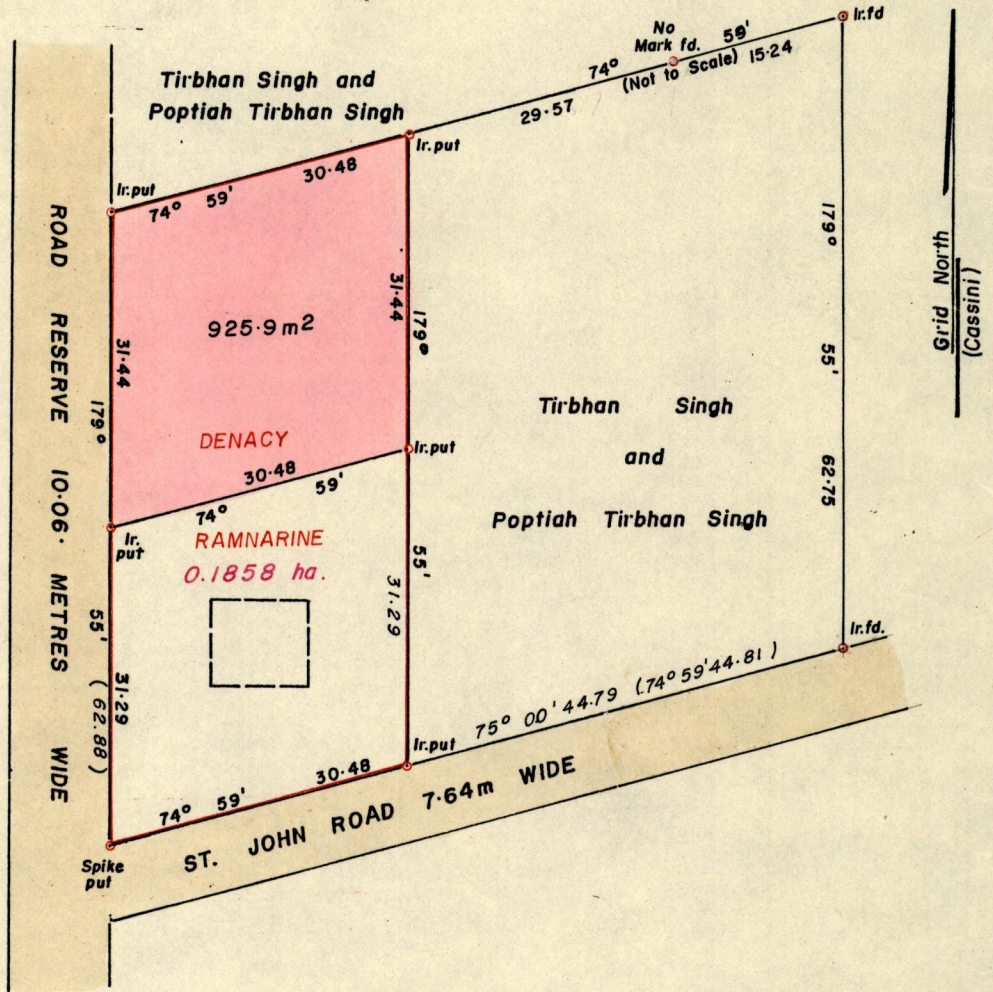
No 21394

R.P.O. Vol. 43
C.T. Vol. 2005

Fol. 249
Fol. 497

Ward of Pointe-a-Pierre
County of Victoria
Cadastral Sheet D.24. G.

54C
1/a



Approved

Law Charles

Director of Surveys
93.05.10

SCALE 1 / 750

Note: To obtain compass bearings add/subtract 5 minutes Distances are in metres

PLAN of a Parcel of land coloured pink in the Ward of Pointe-a-Pierre
Containing nine hundred and twenty-five point nine square metres

Surveyed by me, with due authority, in 15th September 1991

I certify that I have complied with rule 76 under section 14(2)(d) of the
Land Surveyors' Ordinance 1952, and that this plan is correct.

Checked by *Harvey S. Ramzekha* 9 April 93

Land Surveyor, Trinidad and Tobago 14 - 01 - 19.93

Previous Survey in Bk. 9855 Feb. 198.

SAW

DEM

