

No

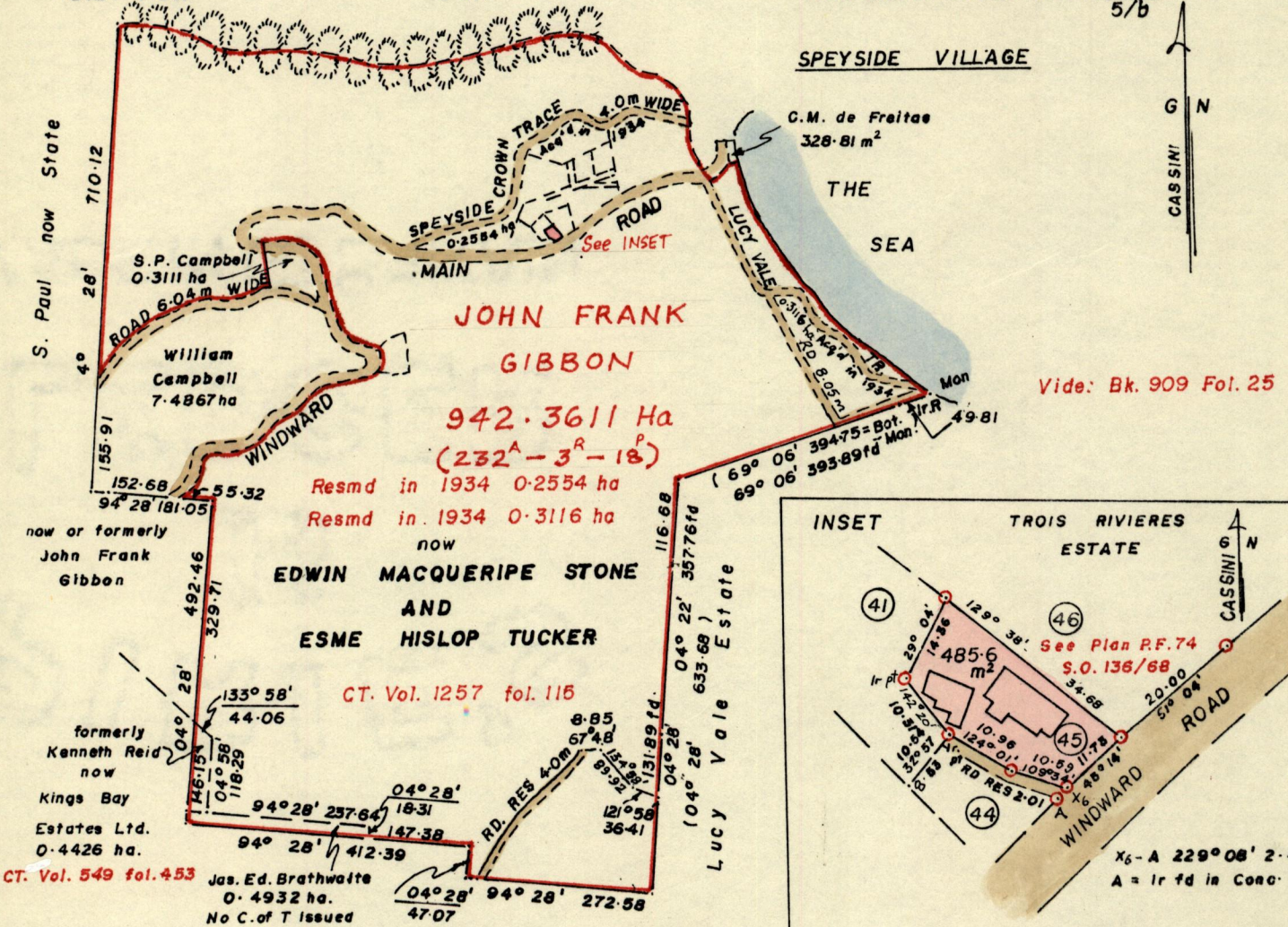
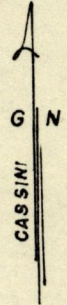
21762

R.P.O. Vol. 476
C.T. Vol.

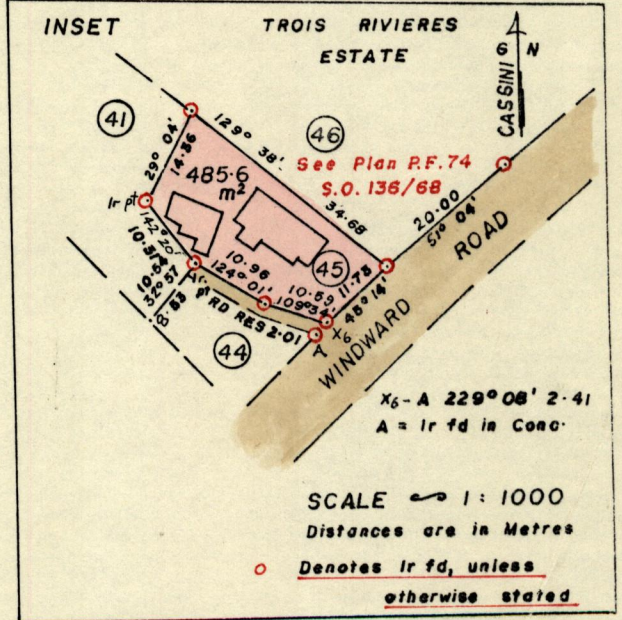
Fol. 669
Fol.

Ward of Tobago
Parish of St. John
Cadastral Sheet 1.10.K, 3E
5/b

SPEYSIDE VILLAGE



Vide: Bk. 909 Fol. 25



(Note CT. Vol. 1257 : 115 (64.8281ha) formerly Margaret M'Donald
now Gloria Morales CT. Vol. 3107 : 285^B

Approved

Lawrence Cole
Director of Surveys
93.0541

Bearings are based on Solar Obs.

Note: To obtain ~~compass~~ True bearings add/subtract 2 minutes

SCALE 1:9504

Distances are in Metres

PLAN of a Parcel of land coloured pink in the Ward of Tobago
Containing four hundred and eighty five point six square metres (0^A - 0^A - 19^P)

Surveyed by me, with due authority, on 19th September 1992 for Emlyn Pilgrim

I certify that I have complied with rule 76 under section 14(2)(d) of the
Land Surveyors' Ordinance 1952, and that this plan is correct.

Checked by *A. B. 7/5/93*

Horace A. Achille
Land Surveyor, Trinidad and Tobago
15th October 1992

Entered

887

See Original Plan P.F. 74

