

1985 13/5/84

1196

3333

R.P.O. Vol. 58 - Fol. 637

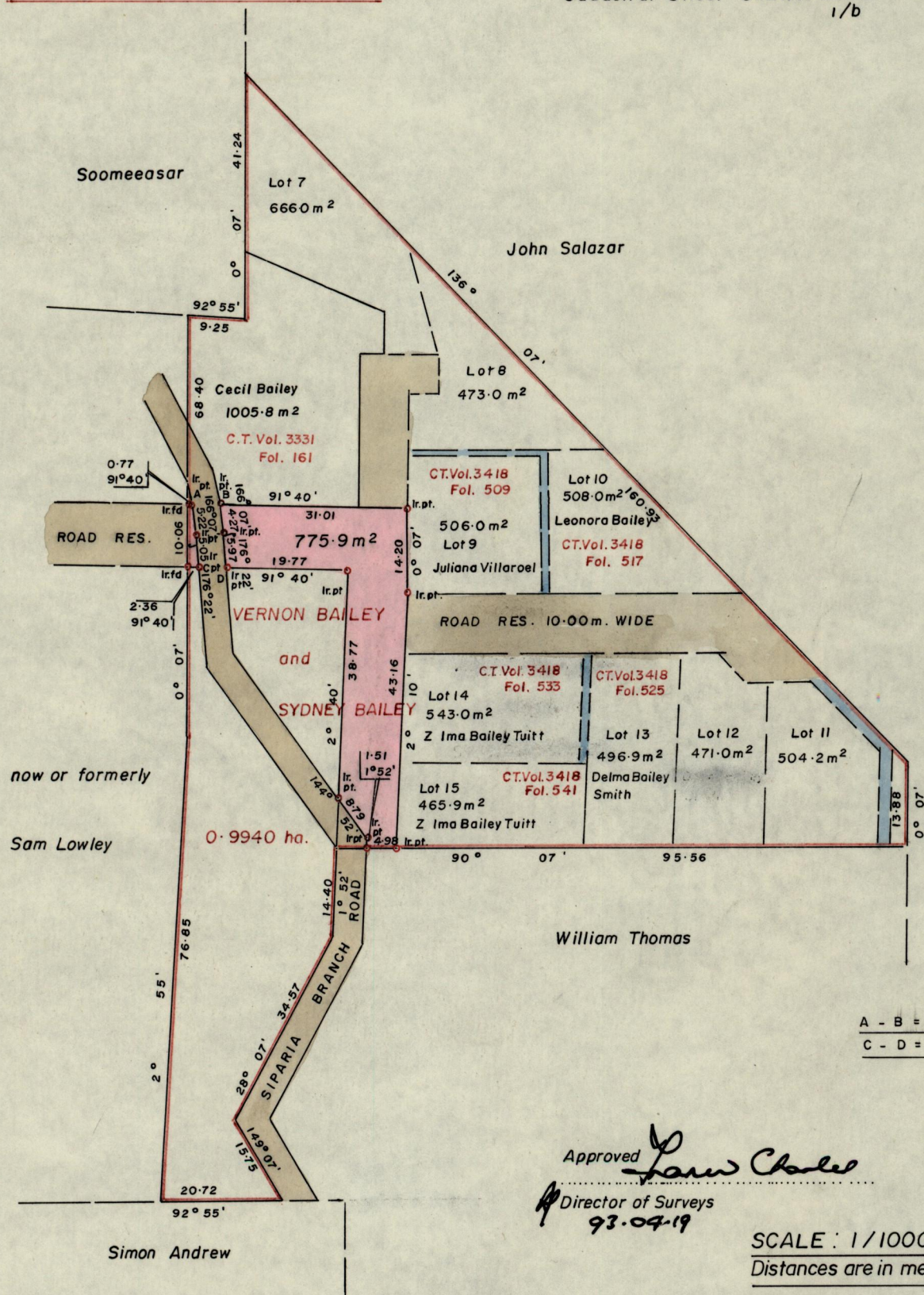
C.T. Vol. 2863 Fol. 245

General Plan filed in C.T. Vol. 3418 Fol. 501

Ward of Siparia

County of St. Patrick

Cadastral Sheet G.12.A. 63D  
1/b



A - B = 91° 40' 5.21  
 C - D = 91° 40' 5.04

Approved *Larry Charles*  
 Director of Surveys  
 93.04.19

SCALE: 1/1000  
 Distances are in metres

To obtain compass bearings subtract 7 minutes

Plan of a parcel of land coloured pink in the Ward of Siparia  
 Containing seven hundred and seventy five point nine square metres  
 Surveyed by me, with due authority in April 1989.

I certify that I have complied with Rule 76 under Section 14 (2) (d) of the Land  
 Surveyors' Ordinance 1952 and that this plan is correct.

Checked by *Abdyl 13 April 93*

Entered .....

*J.R. Jardine*  
 Land Surveyor, Trinidad 10/3/93

LAND SURVEY CONSULTANTS LTD.  
 2c DERE STREET  
 PORT-OF-SPAIN  
 62-53280

388

1100