

1196

L. & S.—54

356

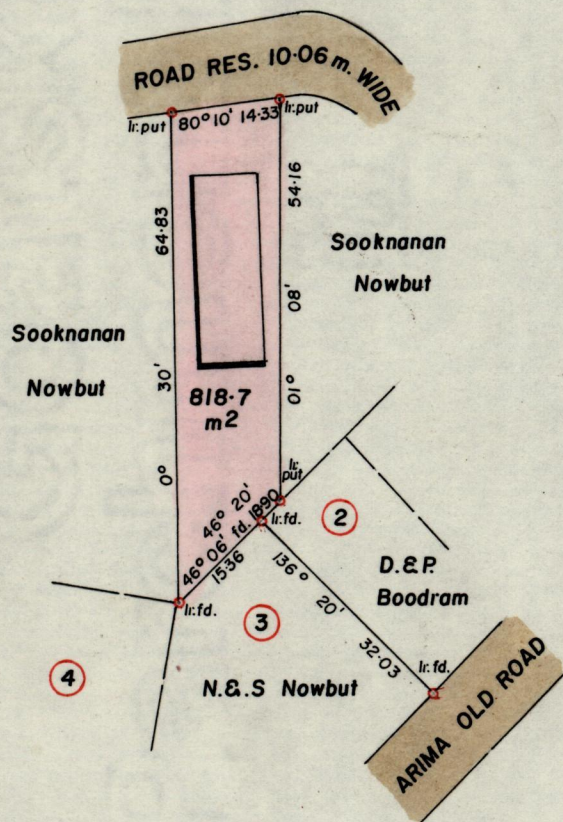
No

21678

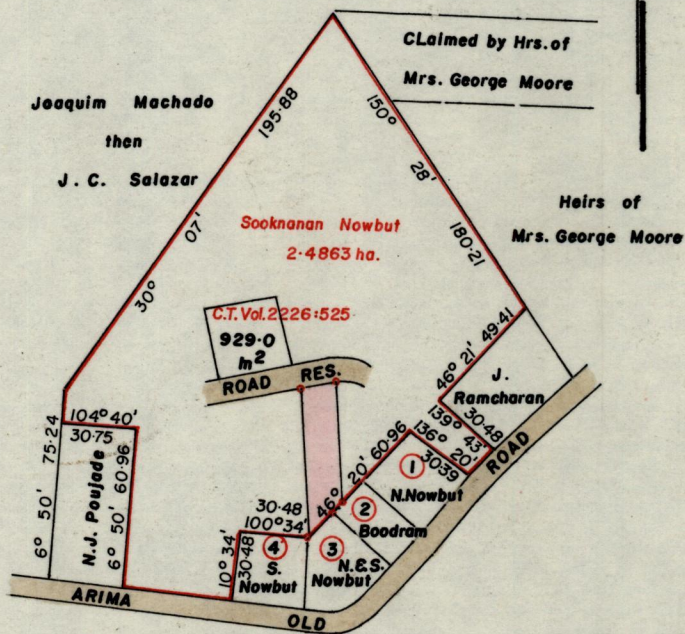
R.P.O. Vol. 518  
C.T. Vol. 2035  
C.T. Vol 5496

Fol. 165  
Fol. 213  
Fol. 375

Ward of Arima  
County of St. George  
Cadastral Sheet B.19.N.E.O.  $\frac{24B}{2/d}$



SCALE 1:1000  
Distances are in metres



Approved

*[Signature]*  
Director of Surveys  
93-03-10

SCALE 1" = 4 chains.

Note: To obtain compass bearings add/subtract 8 minutes Distances are in metres

PLAN of a Parcel of land coloured pink in the Ward of Arima

Containing eight hundred and eighteen point seven square metres

Surveyed by me, with due authority, in February 1977

I certify that I have complied with rule 76 under section 14(2)(d) of the Land Surveyors' Ordinance 1952, and that this plan is correct.

Checked by *[Signature]*

*[Signature]*

Entered .....

Land Surveyor, Trinidad 14<sup>th</sup> August 1986  
and Tobago



3211

LOT #	C.T. Vol & Folio	Names.
	5496 fol. 377	Elizabeth Sampath.

1196/356