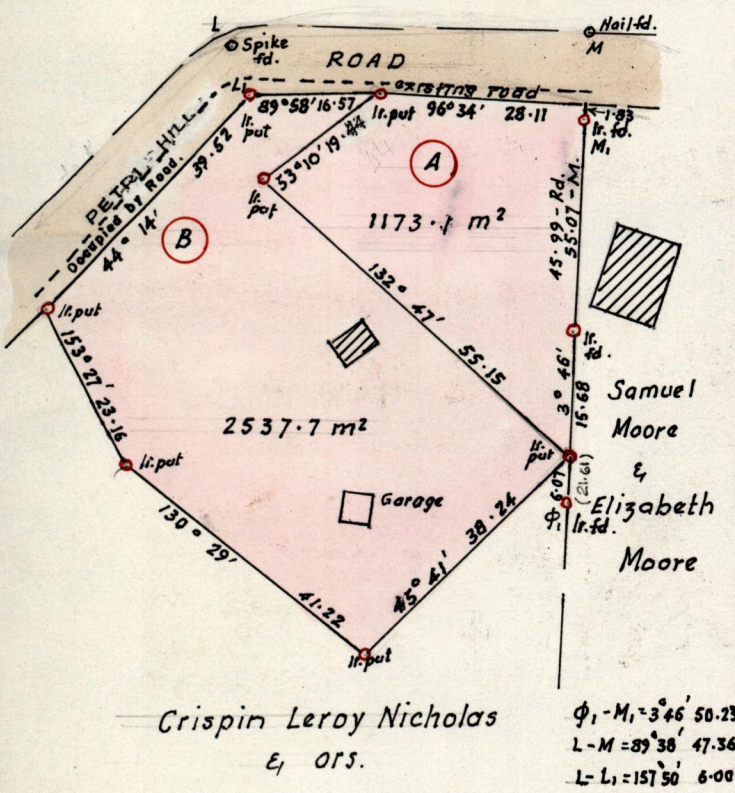
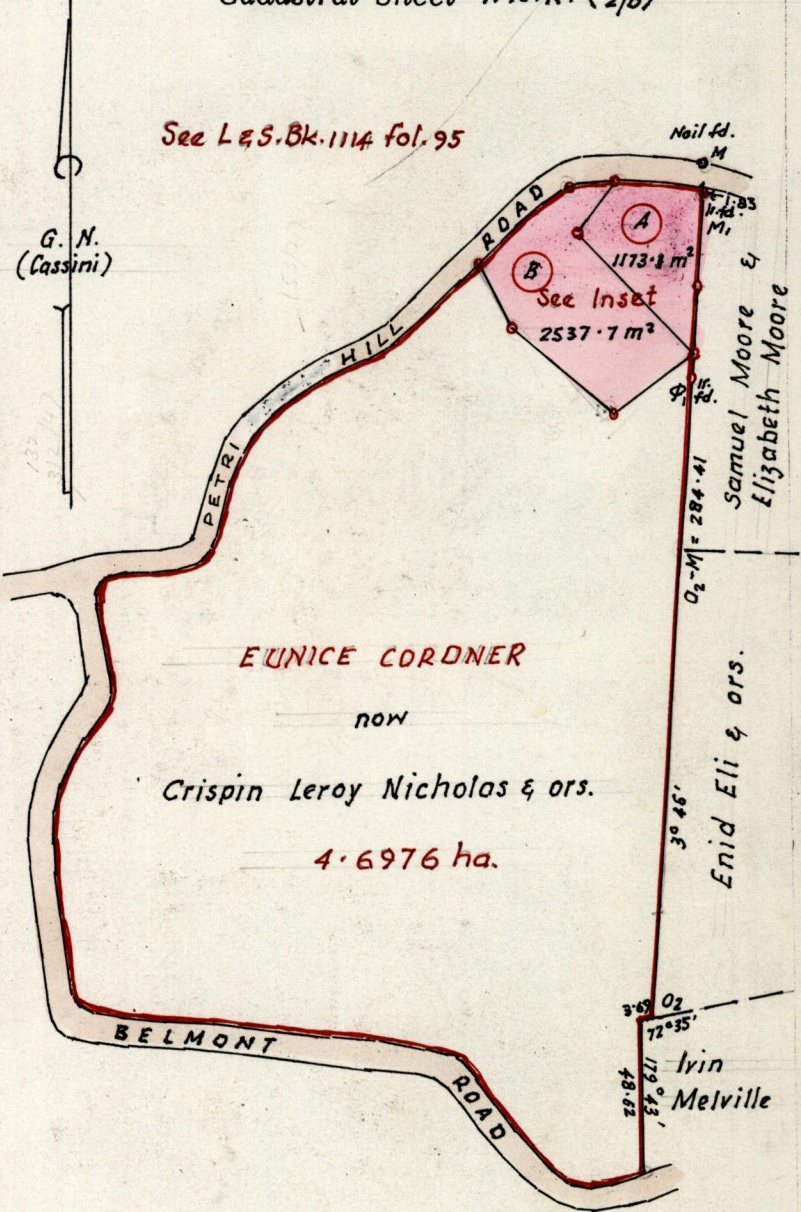


R.P.O. Vol. 2305 Fol. 237
C.T. Vol. 3453 Fol. 133

Ward of Tobago
Parish of St. George
Cadastral Sheet 1.18.A. (2G)
(2/b)



See L & S. Bk. 1114 fol. 95



Approved
[Signature]
Director of Surveys
98.11.27

Bearings are based on Solar Observations.
Note: ~~To obtain compass bearings add/subtract minutes~~
SCALE: 1/2500
Distances are in metres

PLAN of 2 Parcels of land coloured pink in the Ward of Tobago
Containing A. one thousand, one hundred & seventy-three point one square metres &
B. two thousand, five hundred & thirty-seven point seven square metres
Surveyed by me, with due authority, in April 1997

I certify that I have complied with rule 76 under section 14(2)(d) of the
Land Surveyors' Ordinance 1952, and that this plan is correct.

Checked by *[Signature]* 98.11.16
Entered Land Surveyor, Trinidad 13th June 1997

Original See Bk 1114 Fol. 95

