

1196

310

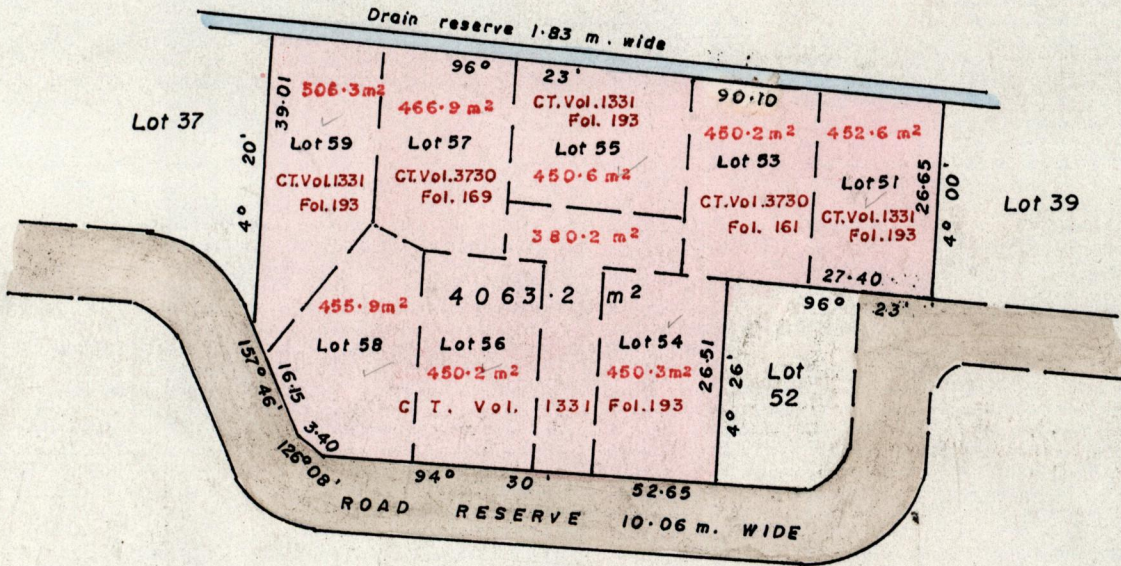
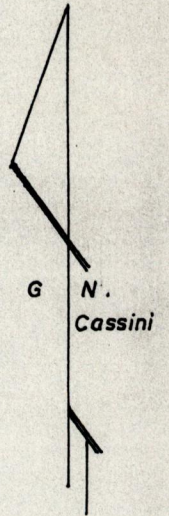
L. and S.—53

Cadastral Sheet B.25.A.  $\frac{24C}{4/a}$

Borough  
~~Ward~~ of Arima

County of St. George

CONSOLIDATED PLAN



Approved

Director of Surveys

*[Signature]*  
28.10.27

SCALE : 1 / 1000

add

Note: To obtain compass bearing subtract 10 minutes Distances are in metres

PLAN of 9 Parcels of land coloured pink in the ~~Ward~~ Borough of Arima

Containing together four thousand and sixty three point two square metres

Prepared by me, with due authority, in July 1998

for McLeod Helmet Crested Humming Bird Ltd.

Checked by *M.F. 19.15*

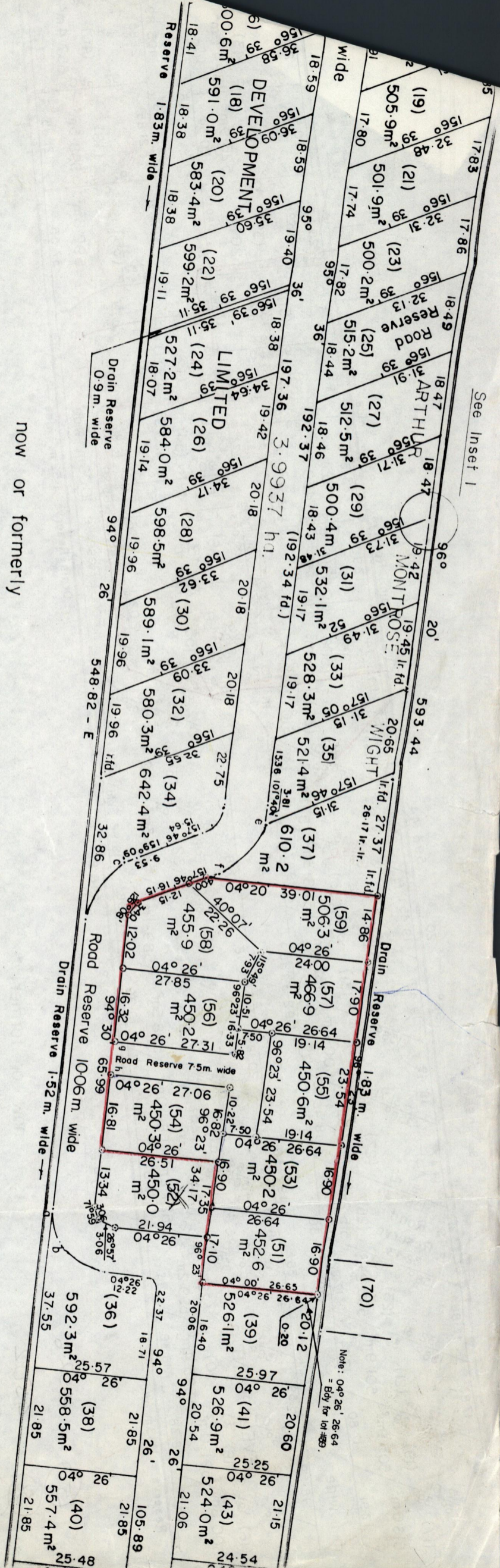
Entered.....

*[Signature]*  
Land Surveyor, Trinidad..... 10<sup>th</sup> July..... 1998.

Original Survey Plan JB102



See Inset 1



now or formerly  
Zita de Gannes

SCALE 1:1000  
Distances are in METRES

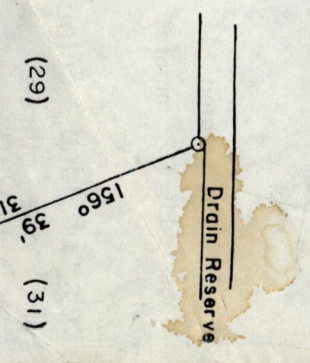
ss otherwise stated.  
rings add 10 minutes.  
cols of land coloured  
our one three three  
pink in the Borough of Arima  
hectares.

Curve Data

- a - b 77° 33' 7.75  
Delta = 33° 46'
- Radius = 13.35
- c - d 121° 54' 16.55  
Delta = 54° 56'
- Radius = 17.94

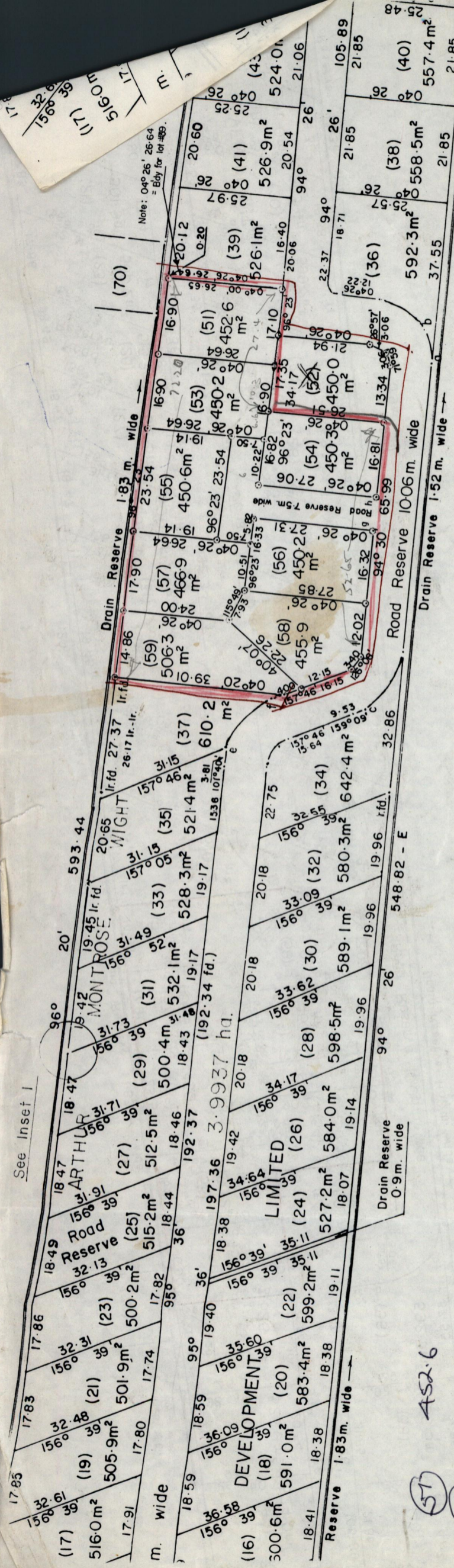
- L2-12 156° 39' 11.46
- e - f 132° 46' 15.59
- g - h 94° 30' 7.50

INSET 1



Note: 04° 26' 26.64  
= Bdy for lot 409.

See Inset I



- (51) 452.6
- (52) 450.2
- (54) 450.3
- (55) 450.6
- (56) 450.2
- (57) 466.9
- (58) 455.9
- (59) 506.3

Apr. 4503.2 m<sup>2</sup>

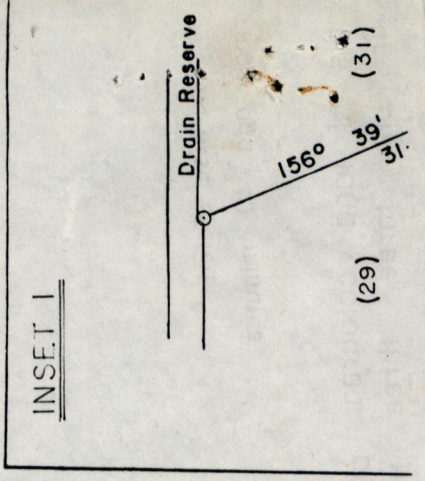
now or formerly  
Zita de Gannes

380.2 m<sup>2</sup>

Curve Data

a - b	77° 33'	7.75
	Delta =	33° 46'
	Radius =	13.35
c - d	121° 54'	16.55
	Delta =	54° 56'
	Radius =	17.94

SCALE 1:1000  
Distances are in METRES



as otherwise stated.  
rings add 10 minutes.

cells of land coloured pink in the Borough of Arima.  
our one three three three hectares.