

REMAINING PORTION

R.P.O. Vol. 214

Fol. 277

1196

Cadastral Sheet 63.F, (G.13.K)
4/a.

C.T. Vol. 906

Fol. 341

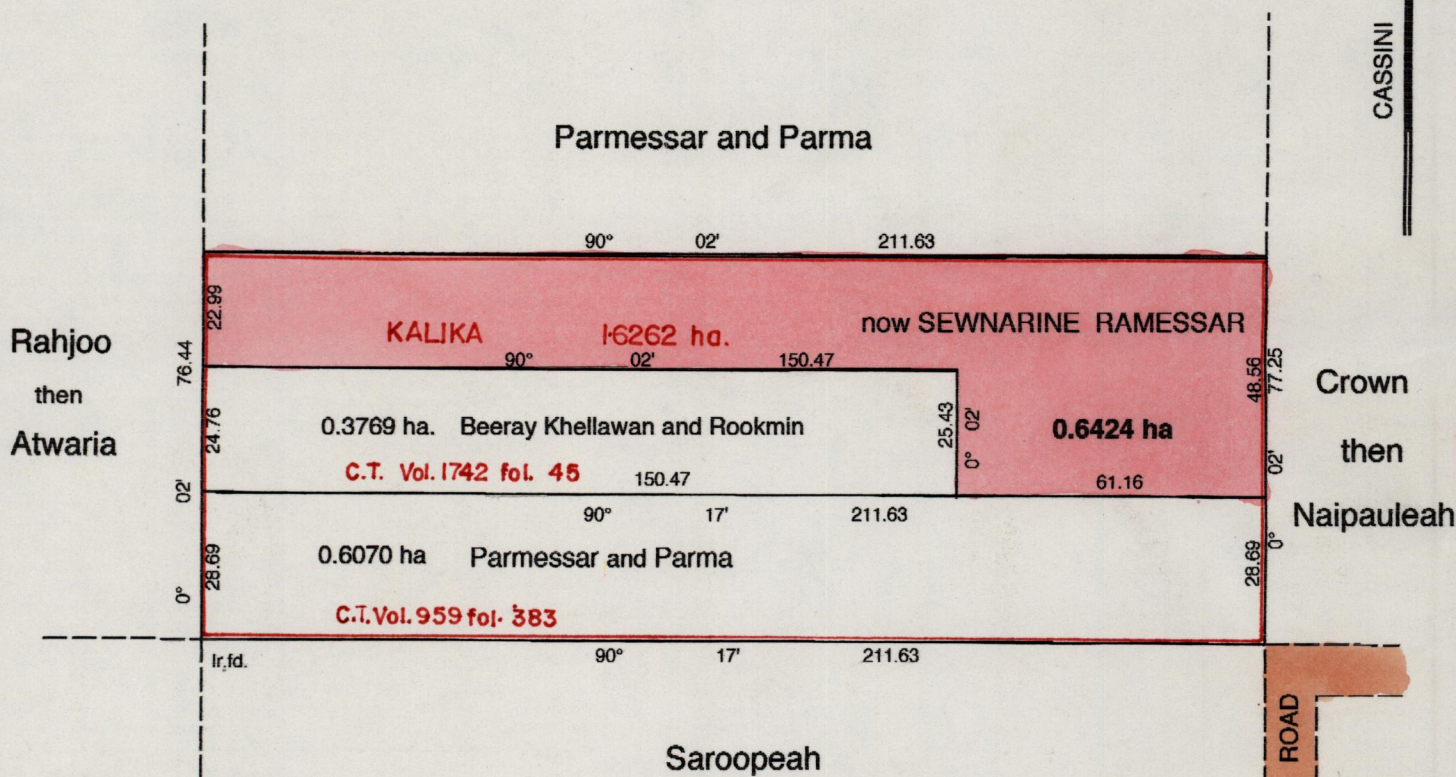
Ward of Siparia

31

County of St. Patrick

G N

CASSINI



Vide Bk. 798 fol. 150

Vide Bk. 997 fol. 71

Approved

[Signature]

Director of Surveys

2 9803 22

Note : To obtain compass bearings subtract 2 minutes.

SCALE 1 : 1500

Bearings are Cassini Grid based on Solar Obs.

Distances are in metres

This is a true copy of a diagram of one point six two six three originally transferred to KALIKA, showing a portion coloured pink and containing zero point six four two four hectare being the remainder after two (2) previous transfers of another portion of land. The dividing lines having been run in conformity with rule 76 under section 14 (2) (d) of the Land Surveyors 'Ordinance 1952, and duly certified by the Director of Surveys.

Checked by

[Signature] Harvey S. Ramreckha

Entered

Land Surveyor, Trinidad & Tobago

3 - 07 - 1997

Original survey Bk. 798 fol. 241



Faint, illegible text or markings, possibly a stamp or impression, located in the lower-left quadrant of the page.

