

1196

L. & S.—54

305

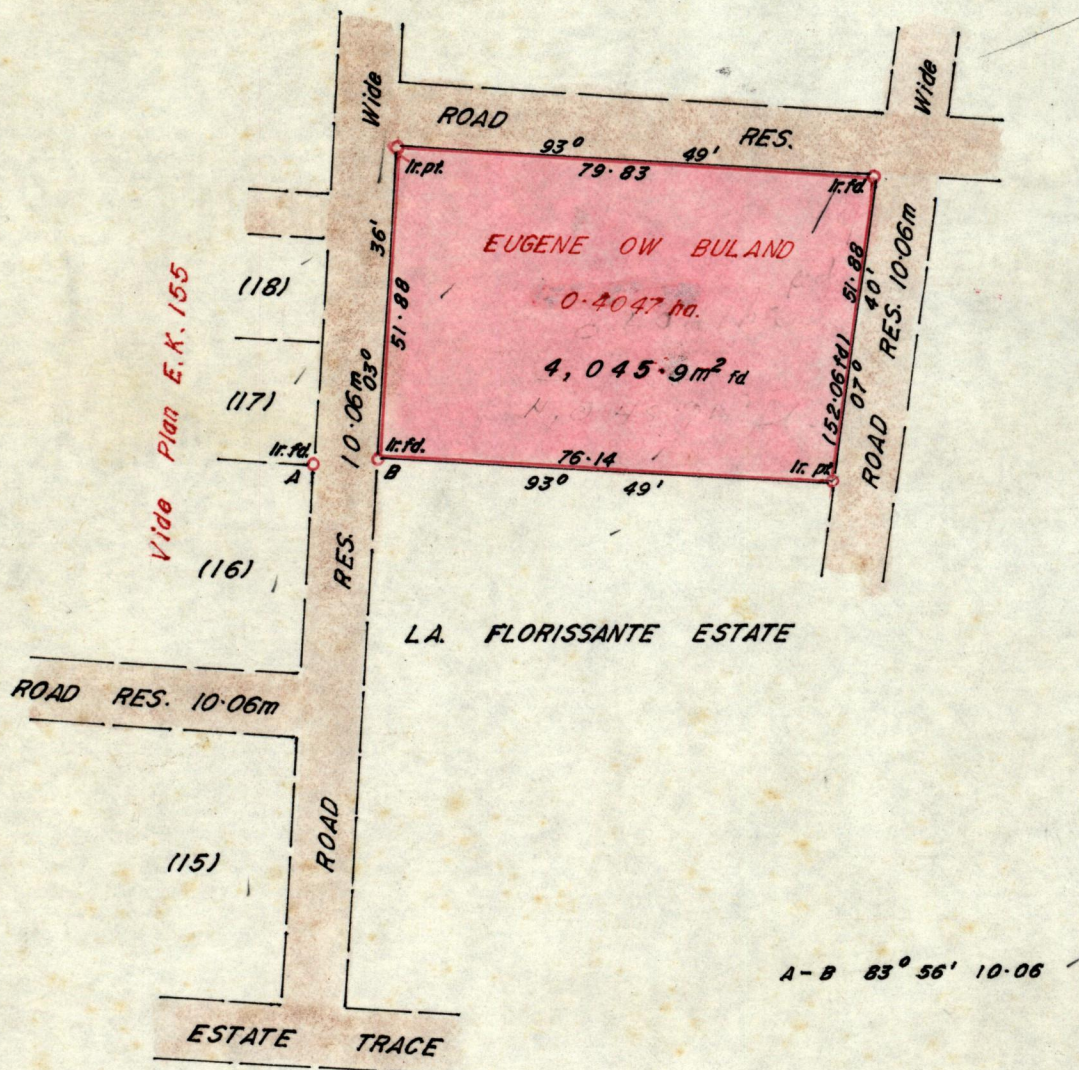
No 8681

R.P.O. Vol. 805
C.T. Vol. 1935

187
Fol. 181
Fol. 85

Borough of Arima
County of St. George
Cadastral Sheet B.24.B. ^{24B}/_{4/9}

Vide Plan E.C. 162



Approved

Francis Cole
Director of Surveys
92.10.16

SCALE 1/1250

Note: To obtain compass bearings add/~~subtract~~ 17 minutes Distances are in metres

PLAN of a Parcel of land coloured pink in the Borough of Arima
Containing four thousand and forty five point nine square metres
Surveyed by me, with due authority, in July, 1981

I certify that I have complied with rule 76 under section 14(2)(d) of the
Land Surveyors' Ordinance 1952, and that this plan is correct.

Checked by *R. Ramcharan* 5/10/82

Hugh Somarsingh
Land Surveyor, Trinidad 16th March 1982

N. Saubis

Original Survey Plan E.C. 162

2011

1000 211

