

1196

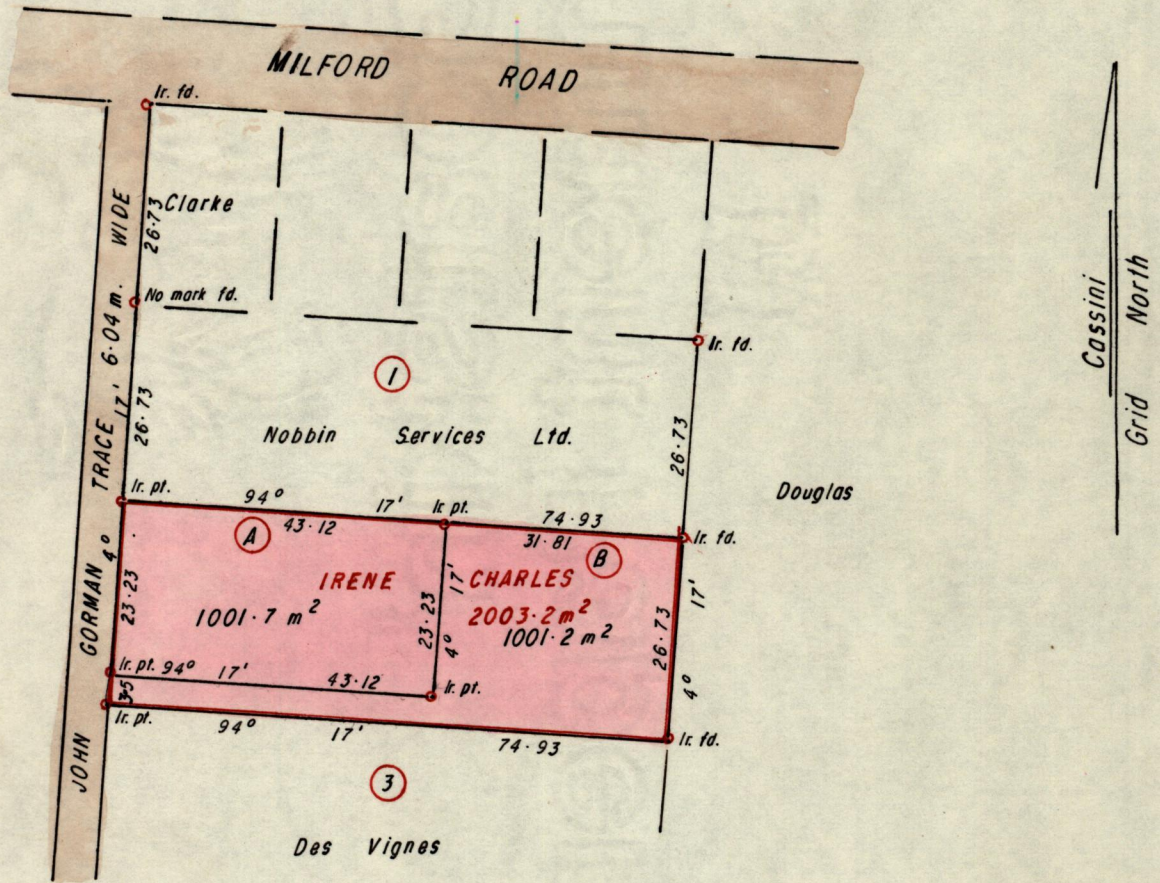
278

Nº 192

C.T.
R.P.O. Vol. 520
C.T. Vol. 2095

Fol. 469
Fol. 183

Ward of Tobago
Parish of St. Patrick
Country of St. Patrick
Cadastral Sheet 1.21. A $\frac{1E}{5/b/4}$
Bk. 1003 Fol. 145



Approved [Signature]
 Director of Surveys
 98.10.02

SCALE 1/1000

Note: To obtain compass bearings add/subtract minutes Distances are in metres

PLAN of ² Parcels of land coloured pink in the Ward of Tobago
 Containing Two thousand and two point nine square metres
 Surveyed by me, with due authority, in May, 1998

I certify that I have complied with rule 76 under section 14(2)(d) of the
 Land Surveyors' Ordinance 1952, and that this plan is correct.

Checked by CP 7/9/98 [Signature]

Entered Land Surveyor, Trinidad 23rd August 1998
 and Tobago

855

0011

Original Survey Bk. 1003 fol. 145

504.307
28.307

504.307
28.307

