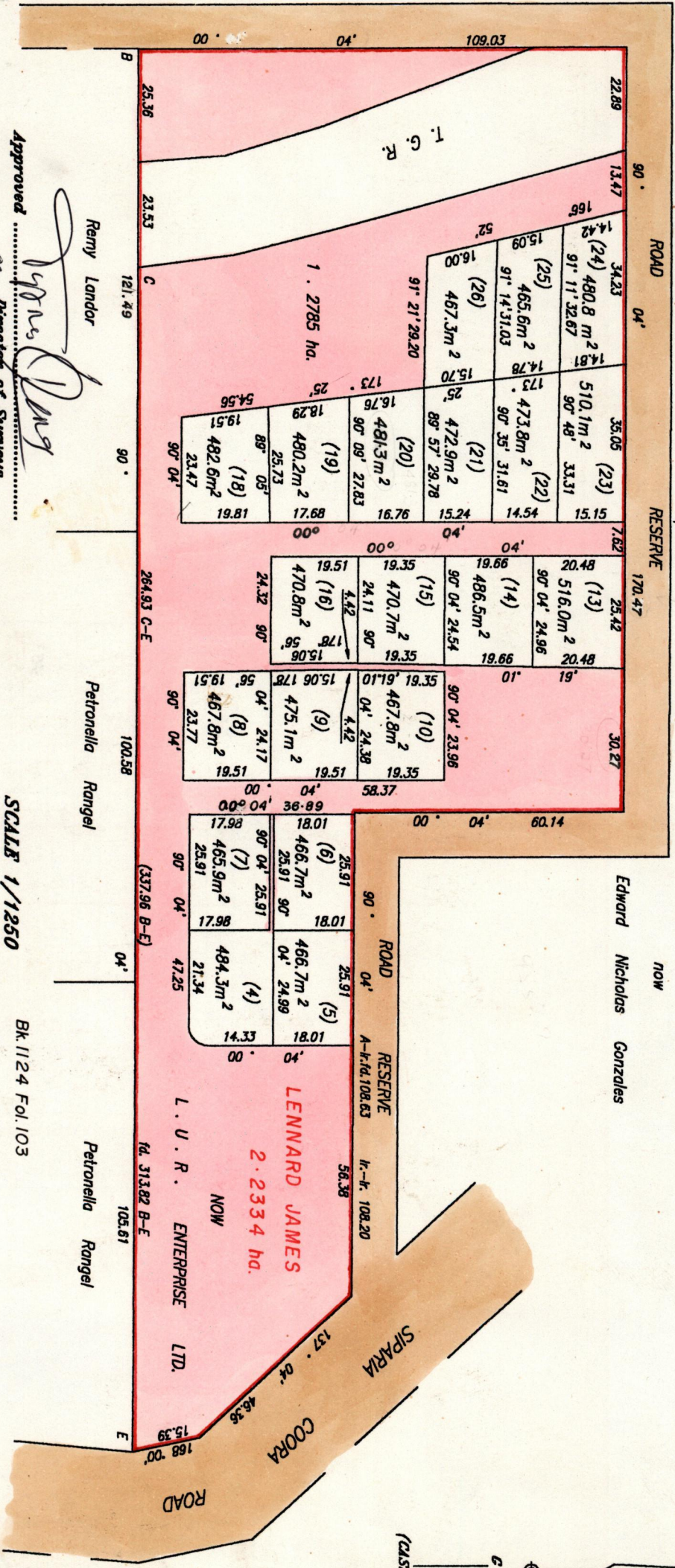


R.P.O Vol 150
C. T. Vol 2323

Fol 377
Fol 523

REMAINING PORTION

Ward of Siparia.
County of St. Patrick.
Cadastral Sheet C. 17. C, 73B
1/c.



Approved
 Remy Landor
 Director of Surveys
 28/9/78

SCALE 1/1250

Bk. 1124 Fol. 103

Note: To obtain compass bearings subtract 4 minutes.

This is a true copy of a diagram of two point two three four hectares

Previously Granted to Lennard James, showing a portion

coloured pink and containing one point two seven eight five hectares being the remainder

after several previous transfers of other portions of the land

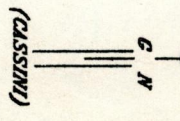
The dividing lines having been run in conformity with Rule 76 under Sec. 14(2)(d) of the

Land Surveyors' Ordinance 1952, and duly certified by the Director of Surveys.

Checked by M.T. 38.9.12

Entered on

Land Surveyor, Trinidad & Tobago 25/9/1998



1196 Vol 2

Original see BR 1124:103

NOS.	TITLES	NOS.	TITLES
No. 4	C.T.Val 2700 Fol.311	No.16	C.T.Val 2708 Fol.87
No. 5	C.T.Val 2710 Fol.543	No.18	C.T.Val 2810 Fol.25
No. 6	C.T.Val 2956 Fol.123	No.19	C.T.Val 2802 Fol.515
No. 7	C.T.Val 2752 Fol.87	No.20	C.T.Val 3282 Fol.47
No. 8	C.T.Val 2752 Fol.77	No.21	C.T.Val 2773 Fol.391
No. 9	C.T.Val 2616 Fol.533	No.22	C.T.Val 3282 Fol.27
No.10	C.T.Val 3275 Fol.439	No.23	C.T.Val 2758 Fol.463
No.13	C.T.Val 2671 Fol. 65	No.24	C.T.Val 2796 Fol.97
No.14	C.T.Val 2616 Fol.521	No.25	C.T.Val 2796 Fol.97
No.15	C.T.Val 2644 Fol.421	No.26	C.T.Val 2796 Fol.97

